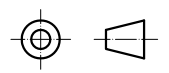
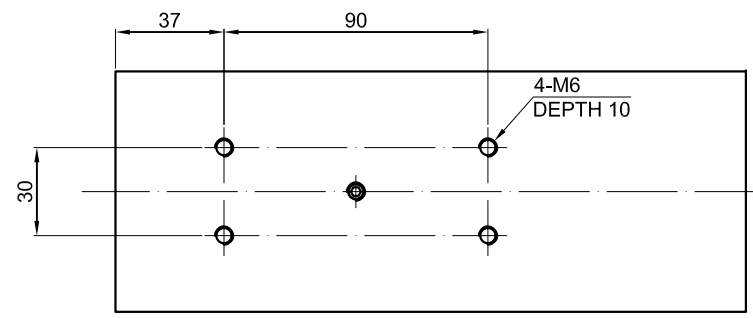


B

SPECIFICATION	VALUE
POWER (Kw)	3.5
VOLTAGE (VAC)	220
RATED CURRENT (A)	15
MAXIMUM SPEED (RPM)	18000
FREQUENCY (Hz)	300
NUT MODEL	ER25
COLLET (mm)	Ø12.7
COOLING	AIR COOLED
MATERIAL	STAINLESS STEEL
LUBRICATION	GREASE
WEIGHT (Kg) [lb]	8.85 [19.51]

B VIEW BOTTOM OF SHELL



	mm	APVD		7.11.2022	<h1>SPINDLE MOTOR</h1>
	UNIT	CHKD			
	3:1	DRN			<h2>GDZ93×82-3.5B4</h2>
	SCALE	SIGNATURE		DATE	