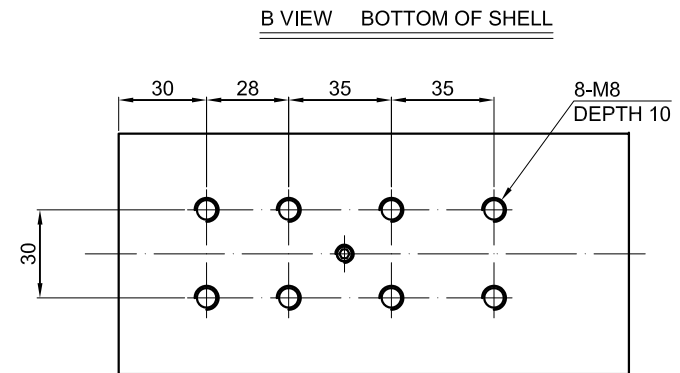


SPECIFICATION	VALUE
POWER (Kw)	2.2
VOLTAGE (VAC)	380
RATED CURRENT (A)	5.5
MAXIMUM SPEED (RPM)	18000
FREQUENCY (Hz)	300
NUT MODEL	ER25
COLLET (mm)	Ø6、Ø6.35、Ø12、Ø12.7
RUNOUT OFF (mm)	LESS THAN 0.005
BEARINGS	2x7007(P4) + 2x7002C(P4)
COOLING	AIR COOLED
MATERIAL	STAINLESS STEEL
LUBRICATION	GREASE
WEIGHT (Kg) [lb]	7.5 [16.53]



	mm	APVD		5.6.2019	<h2>SPINDLE MOTOR</h2>
	UNIT	CHKD			
	3:1	DRN			<h3>GDZ93×82-2.2C4</h3>
	SCALE	SIGNATURE		DATE	