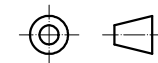
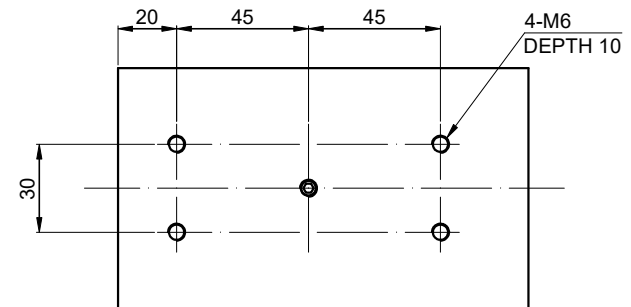


↑
B

SPECIFICATION	VALUE
POWER (Kw)	1.5
VOLTAGE (VAC)	380
RATED CURRENT (A)	3.8
MAXIMUM SPEED (RPM)	18000
FREQUENCY (Hz)	300
NUT MODEL	ER20
COLLET (mm)	Ø6、Ø6.35
RUNOUT OFF (mm)	LESS THAN 0.01
BEARINGS	2x7005 + 2x7002
COOLING	AIR COOLED
MATERIAL	STAINLESS STEEL
LUBRICATION	GREASE
WEIGHT (Kg) [lb]	6.15 [13.56]

B VIEW BOTTOM OF SHELL



STEPPERONLINE ®	mm	APVD	HW	2.28.2024
	UNIT	CHKD		
	3:1	DRN	ZPJ	2.28.2024
	SCALE	SIGNATURE		DATE

SPINDLE MOTOR

GDZ93×82-1.5C4