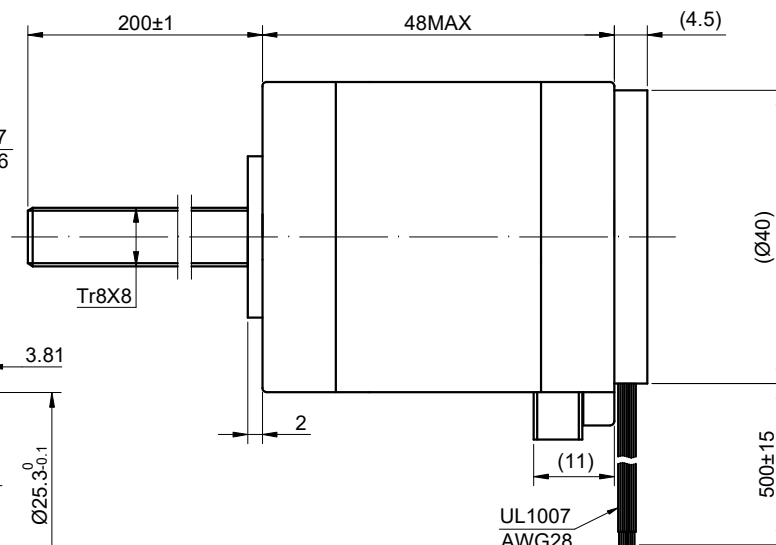
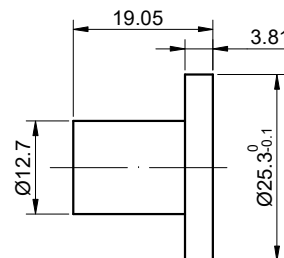
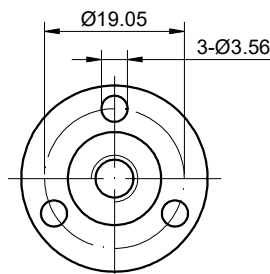
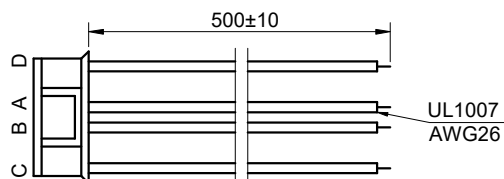
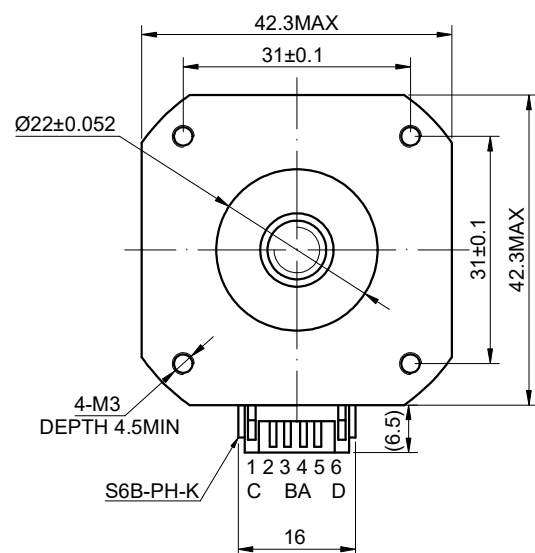


6939	DWG NO.	17LS19-1684E-200G-AR4	MODEL NO.
------	---------	-----------------------	-----------

CUSTOMER'S MODEL: NO MODEL  
END COVER COLOR: BLACK

REV.	REVISION RECORD	BY	DATE
0	ORIGIN	YSX	12.29.2023



CONNECTION	BIPOLAR
AMPS/PHASE	1.68
RESISTANCE/PHASE(Ohms)@25°C	1.65±10%
INDUCTANCE/PHASE(mH)@1KHz	2.80±20%
HOLDING TORQUE(Nm)[lb-in]	0.44[3.89]
STEP ANGLE(°)	1.80
STEP ACCURACY(NON-ACCUM)	±5.00%
LEAD(mm)	8
LINEAR TRAVEL/STEP(mm)	0.04
AMBIENT TEMPERATURE	-10°C~50°C[14°F~122°F]
INSULATION CLASS	B 130°C[266°F]
TEMPERATURE RISE	MAX.80°C
AMBIENT HUMIDITY	MAX.85%

COMMENT:  
1.TMBF 6000h OR MORE @ 24V/300RPM  
2.INSULATION RESISTANCE  
(NORMAL TEMPERATURE AND HUMIDITY): 100 Mohm  
3.DIELECTRIC STRENGTH 500VAC  
FOR 1MIN.(BETWEEN THE MOTOR COILS AND THE MOTOR CASE )

FULL STEP 2 PHASE-Ex.,WHEN FACING MOUNTING END (X)					
STEP	A+	B+	A-	B-	
1	+	+	-	-	
2	-	+	+	-	
3	-	-	+	+	
4	+	-	-	+	

THIS DOCUMENT SHALL NOT BE REPRODUCED  
NOR SHALL THE INFORMATION CONTAINED  
HEREIN BE USED BY OR DISCLOSED TO  
OTHERS UNLESS EXPRESSLY AUTHORIZED IN  
BY WRITING STEPPERONLINE.

ENCODER RESOLUTION:1000PPR		
PIN	DESCRIPTION	COLOR
1	+5V	RED
2	GND	BLK
3	EA+	BRN
4	EA-	ORG
5	EB+	BLU
6	EB-	GRN
7	EZ+	YEL
8	EZ-	WHT

MOTOR CONNECTION			
PIN NO	BIPOLAR	LEADS	WINDING
1	A+	BLK	
2	A -	GRN	
3	B+	RED	
4	B -	BLU	

DIMENSIONS ARE IN MILLIMETERS.	
TOLERANCES AS BELOW:	ANGLES
X ±0.5	±2°
X.X ±0.25	
X.XX ±0.13	
THIRD ANGLE PROJECTION	

**STEPPERONLINE®**

LINEAR ACTUATOR

17LS19-1684E-200G-AR4

SIGNATURE		DATE
DRN	YSX	12.29.2023
APVD	LDJ	12.29.2023

REV.	0	SCALE	1:1	DWG NO.	A0939
------	---	-------	-----	---------	-------