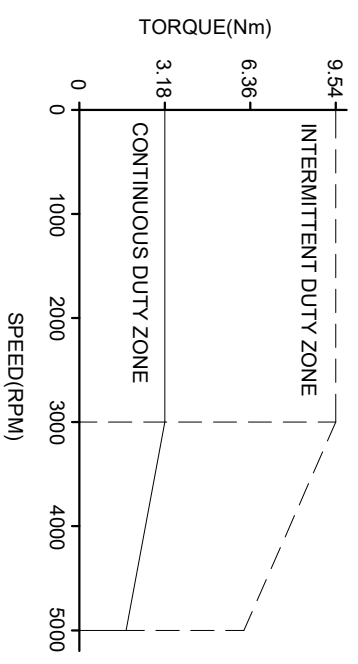
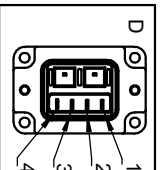
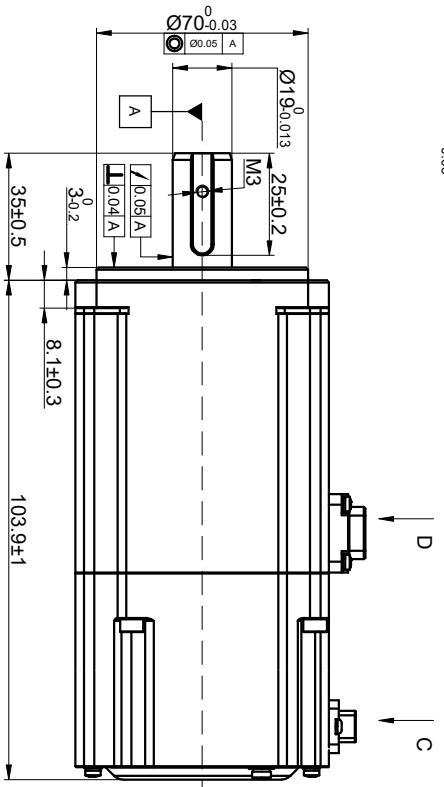
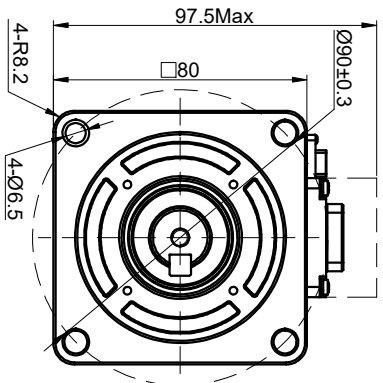
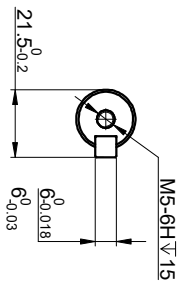
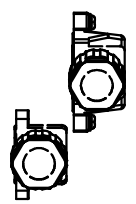


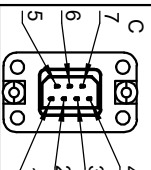
SPEED - TORQUE CURVE



SPECIFICATION	VALUE
RATED VOLTAGE(VAC)	220
RATED POWER(W)	1000
RATED TORQUE(Nm)	3.18
PEAK TORQUE(Nm)	9.54
RATED SPEED(RPM)	3000
PEAK SPEED(RPM)	5000
RATED CURRENT(Amp)	5.7
PEAK CURRENT(Amp)	17.7
TORQUE CONST(Nm/Amp)	0.56
BACK EMF CONST(V/KRPM)	38.3
RESISTANCE(Ω)	1.08
INDUCTANCE(mH)	5.6
INERTIA(Kg·m ² ·10 ⁻⁴)	2
POLES	10
ENCODER TYPE	23bit magnetic
IP RATING	IP67
WEIGHT(KG)	2.8



D	PIN No.	DESCRIPTION	COLOR
1	1	U	BLU
2	2	W	WHT
3	3	V	RED
4	4	PE	YEL/GRN



C	PIN No.	DESCRIPTION	COLOR	SHIELD
1	1	PE	RED	BLK
2	2	5V	BLU	BLU
3	3	0V	YEL	YEL
4	4	SD+	BAT+	BRN
5	5	SD-	BAT-	WHT
6	6			
7	7			

POWER CABLE	CMST1M5-2	AWG 20
ENCODER CABLE	CEST1M5-2	AWG 25

APVD	ZPJ	11.1.2023	AC SERVO MOTOR
CHKD			
DRN	LDJ	11.1.2023	T6M80-1000H2A1-M23
SCALE	SIGNATURE	DATE	