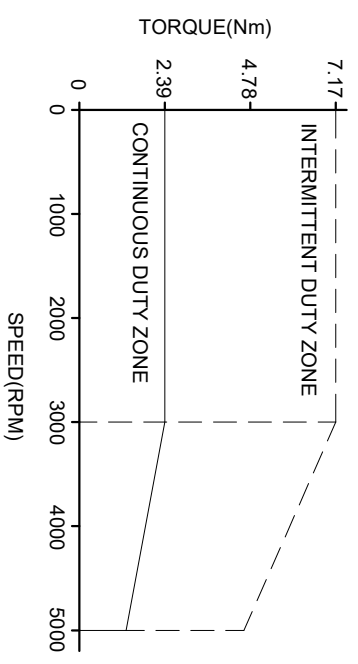
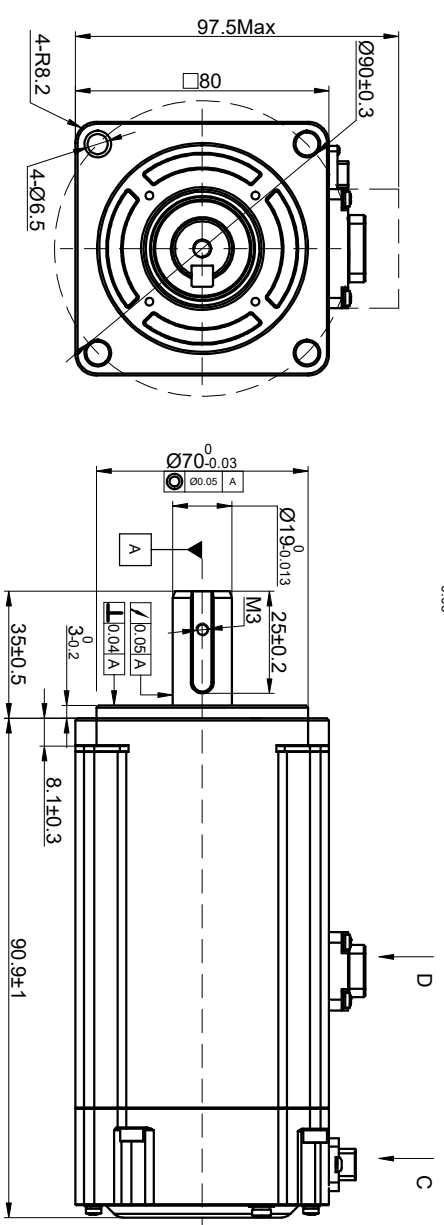
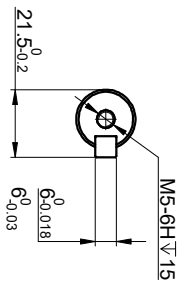
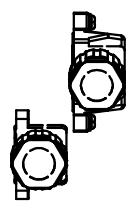


SPEED - TORQUE CURVE



SPECIFICATION	VALUE
RATED VOLTAGE(VAC)	220
RATED POWER(W)	750
RATED TORQUE(Nm)	2.39
PEAK TORQUE(Nm)	7.17
RATED SPEED(RPM)	3000
PEAK SPEED(RPM)	5000
RATED CURRENT(Amp)	4.1
PEAK CURRENT(Amp)	13.4
TORQUE CONST(Nm/Amp)	0.645
BACK EMF CONST(V/KRPM)	39
RESISTANCE(Ω)	1.7
INDUCTANCE(mH)	8
INERTIA(Kg·m ² ·10 ⁻⁴)	1.5
POLES	10
ENCODER TYPE	23bit magnetic
IP RATING	IP67
WEIGHT(KG)	2.12



D		WIRING DETAILS OF POWER CABLE CONNECTOR							
PIN No.	DESCRIPTION	COLOR	1	2	3	4	5	6	7
1	U	BLU	WHT	RED	YEL/GRN	--	--	--	--

C		WIRING DETAILS OF ENCODER CABLE CONNECTOR							
PIN No.	DESCRIPTION	COLOR	1	2	3	4	5	6	7
1	PE	SHIELD	RED	BLK	BLU	YEL	YEL	BRN	WHT

THE PART NUMBER OF CABLE FOR T6M80-750H2A1-M23 MOTOR		
POWER CABLE	CMST1M5-2	AWG 20
ENCODER CABLE	CEST1M5-2	AWG 25

APVD		ZPJ		11.1.2023	
CHKD					
DRN	LDJ			11.1.2023	
SCALE	SIGNATURE	DATE	AC SERVO MOTOR		
2:1			T6M80-750H2A1-M23		