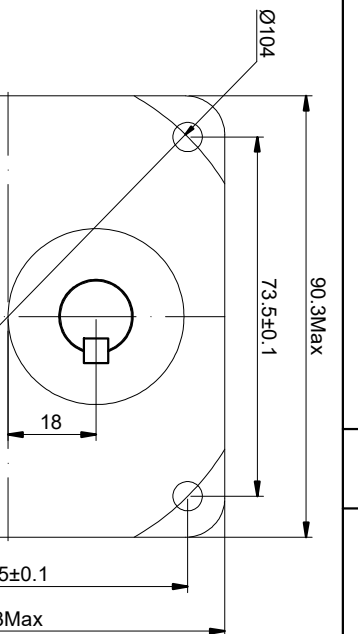
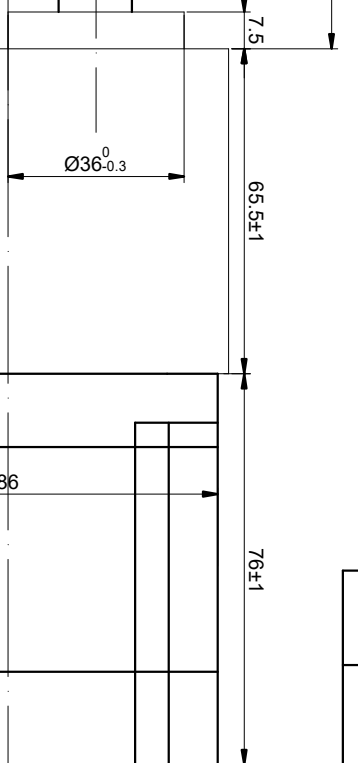
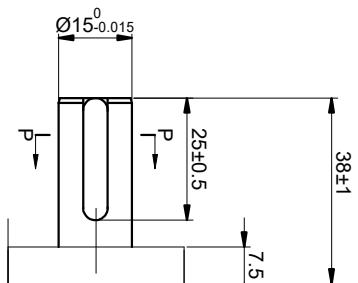
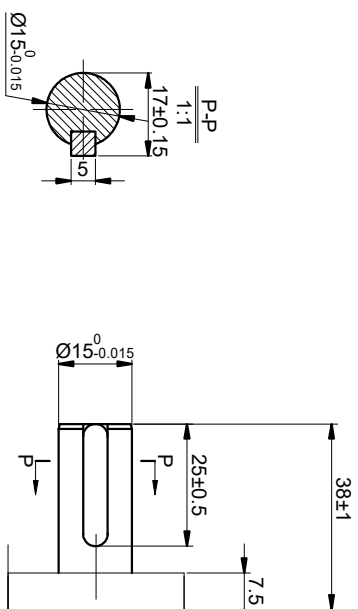


6322V ON GMD 01GS-SY095-0CSH4C ON TEGDM

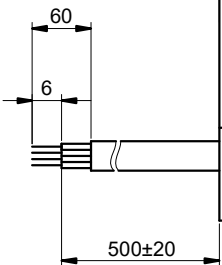
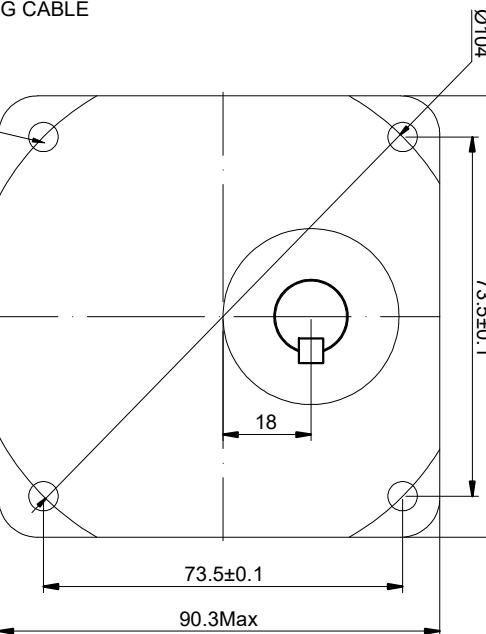
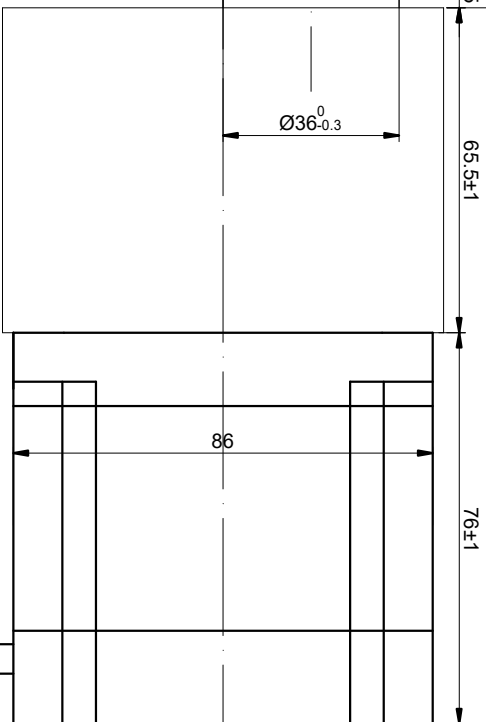
CUSTOMER'S MODEL: NO MODEL
END COVER COLOR: BLACK

REV.	REVISION RECORD	BY	DATE
0	ORIGIN	LDJ	7.18.2023

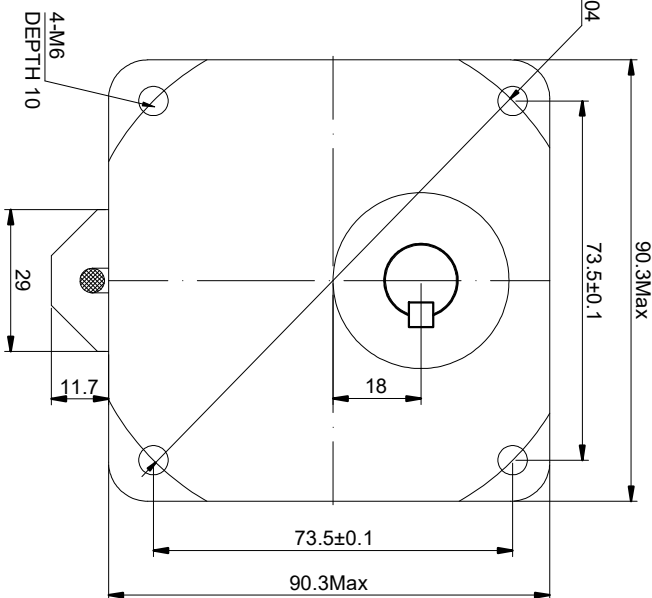


GEAR DECELERATION SPECIFICATION

THE GEAR RATIO	1:10
MAXIMUM INPUT SPEED(rpm)	1350
MAXIMUM OUTPUT SPEED(rpm)	50
MAX. PERMISSIBLE TORQUE(Nm) [lb-in]	10[88.50]
MOMENT PERMISSIBLE TORQUE(Nm) [lb-in]	20[177.01]
RETURN DIFFERENCE	≤4°
EFFICIENCY	81%
LUBRICATION	GREASE
SPECIFICATION CONNECTION	BIPOLAR
AMPS/PHASE	5.6
RESISTANCE/PHASE(Ohms)@25°C	0.35±10%
INDUCTANCE/PHASE(mH)@1KHz	2.80±20%
HOLDING TORQUE(Nm) [lb-in]	4.50[42.52]
STEP ANGLE(°)	1.80
STEP ACCURACY(NON-ACCUM)	±5.00%
ROTOR INERTIA(g-cm²)	1400
WEIGHT(Kg)	4.0
AMBIENT TEMPERATURE	-10°C~50°C [14°F~122°F]
INSULATION CLASS	B [130°C][266°F]
TEMPERATURE RISE	MAX. 80°C



BLACK SERVO TOWING CABLE



FULL STEP 2 PHASE-EX. WHEN FACING MOUNTING END (X)

STEP	A+	B+	A-	B-
1	+	+	-	-
2	-	+	+	-
3	-	-	+	+
4	+	-	-	+



SIGNATURE	DATE
DRN LDJ	7.18.2023
APVD YSX	7.18.2023

STEPPERONLINE®

STEPPER MOTOR

34HS30-5604S-SG10

PIN NO	BIPOLAR	LEADS	WINDING
1	A+	BLK	A+
2	A-	GRN	A-
3	B+	RED	B+
4	B-	BLU	B-

THIS DOCUMENT SHALL NOT BE REPRODUCED NOR SHALL THE INFORMATION CONTAINED HEREIN BE USED BY OR DISCLOSED TO OTHERS UNLESS EXPRESSLY AUTHORIZED IN BY WRITING STEPPERONLINE.

REV.	SCALE	DWG. NO.
0	2:3	A2333