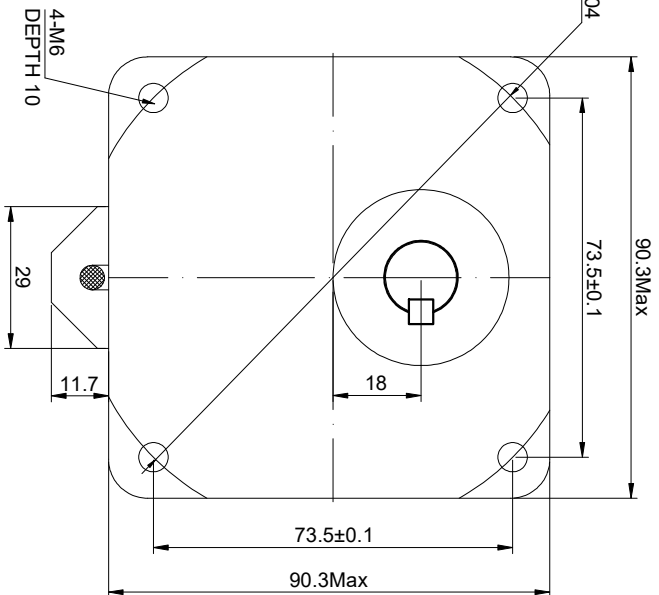
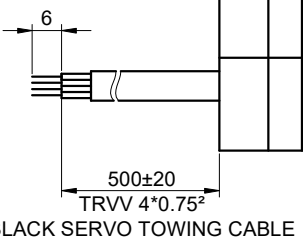
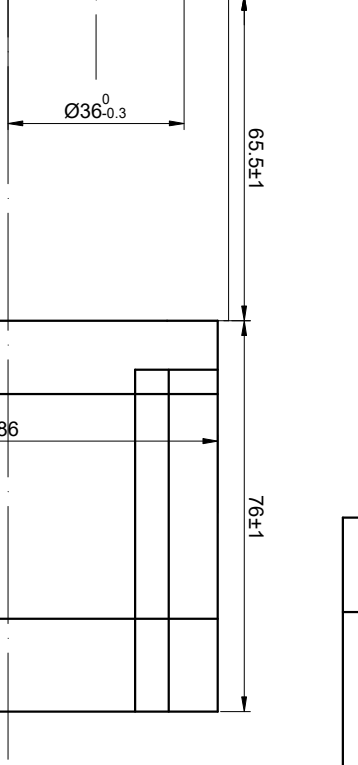
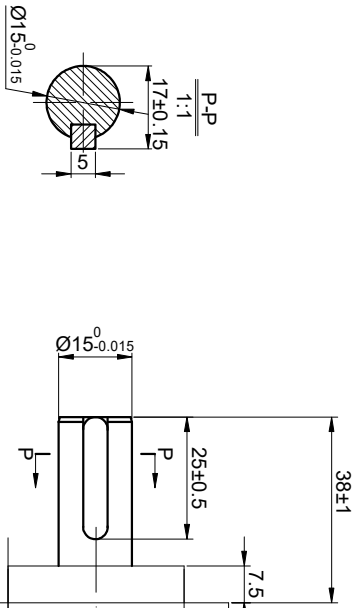


48232V ON GMD 02GS-SY095-06SSH4C ON TEGDM

CUSTOMER'S MODEL: NO MODEL  
END COVER COLOR: BLACK

REV.	REVISION RECORD	BY	DATE
0	ORIGIN	LDJ	7.18.2023



**GEAR DECELERATION SPECIFICATION**

THE GEAR RATIO	1:20
MAXIMUM INPUT SPEED(rpm)	1350
MAXIMUM OUTPUT SPEED(rpm)	50
MAX. PERMISSIBLE TORQUE(Nm)[lb-in]	10[88.50]
MOMENT PERMISSIBLE TORQUE(Nm)[lb-in]	20[177.01]
RETURN DIFFERENCE	±3.5°
EFFICIENCY	81%
LUBRICATION	GREASE
SPECIFICATION CONNECTION	BIPOLAR
AMPS/PHASE	5.6
RESISTANCE/PHASE(Ohms)@25°C	0.35±10%
INDUCTANCE/PHASE(mH)@1KHz	2.80±20%
HOLDING TORQUE(Nm)[lb-in]	4.50[42.52]
STEP ANGLE(°)	1.80
STEP ACCURACY(NON-ACCUM)	±5.00%
ROTOR INERTIA(g·cm²)	1400
WEIGHT(Kg)	4.0
AMBIENT TEMPERATURE	-10°C~50°C[14°F~122°F]
INSULATION CLASS	B [130°C][266°F]
TEMPERATURE RISE	MAX. 80°C

STEP	FULL STEP 2 PHASE-EX. WHEN FACING MOUNTING END (X)				CCW	CW
	A+	B+	A-	B-		
1	+	+	-	-	←	→
2	-	+	+	-		
3	-	-	+	+		
4	+	-	-	+		

FULL STEP 2 PHASE-EX. WHEN FACING MOUNTING END (X)

TOLERANCES ARE IN MILLIMETERS:  
DECIMALS ANGLES  
X ±0.5  
X.X ±0.25  
X.XX ±0.13

THIRD ANGLE PROJECTION

**STEPPERONLINE®**

**STEPPER MOTOR**

34HS30-5604S-SG20

PIN NO	BIPOLAR	LEADS	WINDING
1	A+	BLK	A+ A-
2	A-	GRN	
3	B+	RED	B+ B-
4	B-	BLU	

THIS DOCUMENT SHALL NOT BE REPRODUCED NOR SHALL THE INFORMATION CONTAINED HEREIN BE USED BY OR DISCLOSED TO OTHERS UNLESS EXPRESSLY AUTHORIZED IN WRITING BY STEPPERONLINE.

SIGNATURE	DATE
DRN LDJ	7.18.2023
APVD YSX	7.18.2023

REV.	SCALE	DWG. NO.
0	2:3	A2334