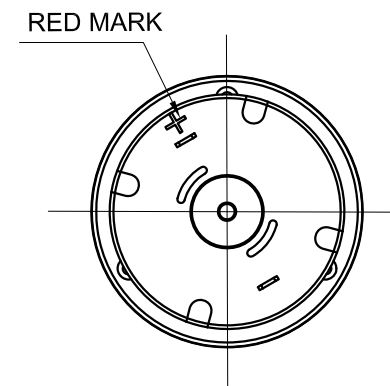
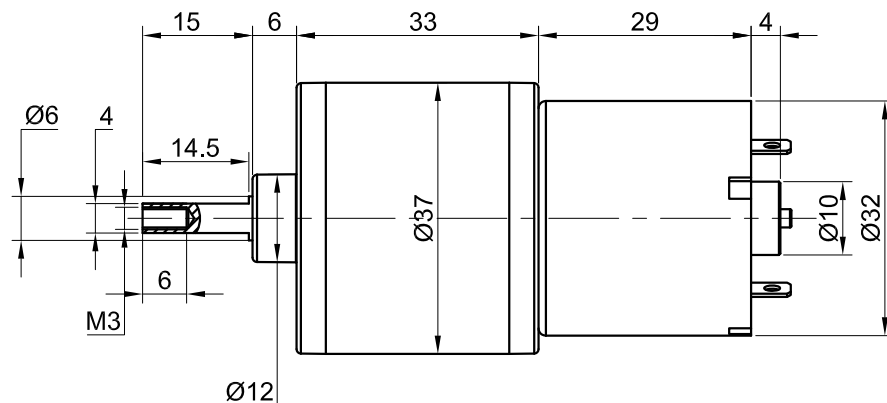


P.C.D Ø31
6-M3 depth 7mm MAX.



| SPECIFICATION | CONNECTION | VALUE | <p>NOTES:</p> <p>1.PLEASE CONDUCT THE WELDING WORK IN A SHORT TIME.(RECOMMENDATION:WITH THE SOLDERING IRON TIP AT A TEMPERATURE OF 340~400℃, WITHIN 2 SECONDS.</p> <p>2.PREVENT GEAR MOTOR FROM BEING SHOCKED OR DROPPING IN MOUNTING PROCESS.IT IS PROHIBITED TO STRIKE AND CRUSH DIRECTLY ON REDUCER OUTPUT SHAFT.</p> <p>3.INSTALL THE SCREWS AFTER FIRST CHECKING THE TAPS AND TAP DEPTH AGAINST THE DIMENSIONS ENTERED ON THE EXTERIOR DRAWING.</p> <p>4.IT IS NECESSARY TO BE CAREFUL THAT THE ADHESIVE DOES NOT SPREAD ALONG THE SHAFT AND FLOW INTO THE BEARING.</p> <p>5.DO NOT TURN A GEARED MOTOR BY ITS OUTPUT SHAFT WHEN,FOR EXAMPLE,ARRANGING ITS POSITION SO AS TO INSTALL IT.</p> |
|----------------------------|------------|--------|---|
| RATED VOLTAGE(V); | | 12 | |
| NO LOAD CURRENT(mA); | | ≤150 | |
| NO LOAD SPEED(RPM); | | 54±5 | |
| RATED LOAD TORQUE(kgf.cm); | | 6 | |
| RATED CURRENT(mA); | | ≤1000 | |
| RATED LOAD SPEED(RPM); | | 40±4 | |
| STALL CURRENT(mA); | | — | |
| STALL TORQUE(kgf.cm); | | — | |
| ROTATION DIRECTION | | CW/CCW | |

STEPPERONLINE®

| | | |
|-------|-----------|-----------|
| | APVD | 9.29.2022 |
| | CHKD | |
| 1:1 | DRN | |
| SCALE | SIGNATURE | DATE |

DC GEARBOX MOTOR

SGF37-32127000-G128