

# STEPPERONLINE<sup>®</sup>

## BLDC DRIVER CONTROL PANEL

### DBLC-01 v3.01



#7 Zhongke Road, Jiangning, Nanjing, China

T: 0086-2587156578

Web site: [www.omc-stepperonline.com](http://www.omc-stepperonline.com)

E-Mail: [sales@stepperonline.com](mailto:sales@stepperonline.com)

## **Function of control box**

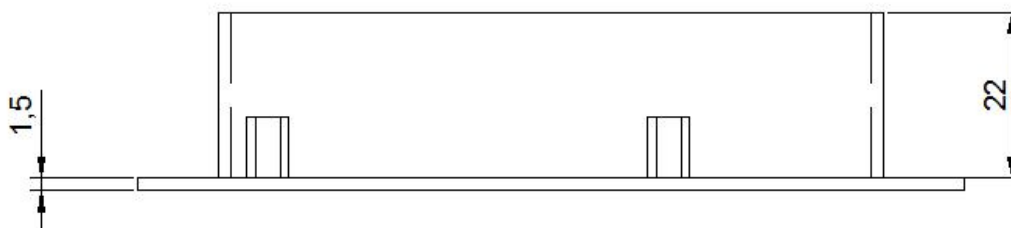
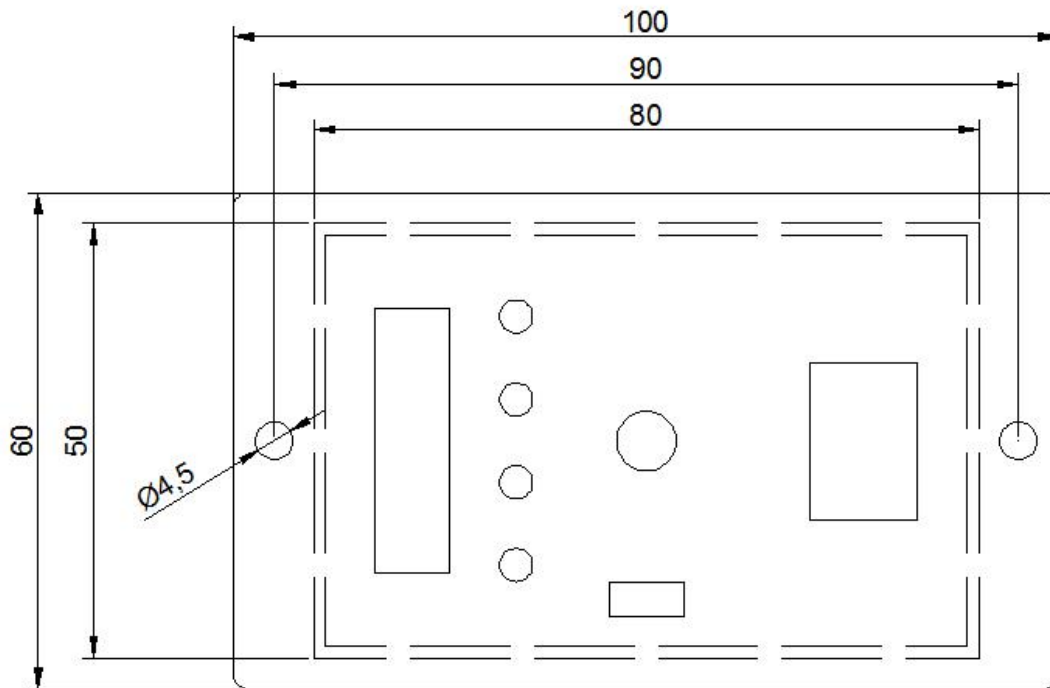
1. Display speed. It can display the real time rotation speed of the motor.
2. Start/Stop button on the panel to control the start/stop of the motor.
3. The forward and reverse keys on the panel can control the forward and reverse running mode of the motor.
4. The speed adjustment potentiometer on the panel allows stepless adjustment of the different speeds of the motor.

## **Terminal interface description**

- 1 GND: signal ground
- 2 F / R: switch the direction of motor operation
- 3 EN: control of motor start/stop
- 4 BK: control of electrical braking of motors
- 5 SV: analogue 0-5vdc input to control motor speed from 0 to set speed.
- 6 PG: signal input for motor speed, display of rotation speed
- 7 ALM: input signal for alarms. ERR is displayed when an alarm is raised
- 8 + 5V: speed regulation of voltage, potentiometer continuously adjustable at SV and GND

## **Mechanical installation:**

The opening size is 50\*80mm, the distance between the mounting holes is 90mm, and the length of the lead wire is 500mm.



**Definition of modifying display board parameters:**

P000 00 Invalid value

**P001** 02 Number of motor poles (Modify according to the actual number of pole pairs of the motor, otherwise the display will not be correct)

**P002** of Multiplication of speed pulse signals

(1 pulse per turn for single pair of poles, corresponding to DBLS-02 brushless driver, parameter 0F)

(3 pulses per turn for a single pair of poles, change the parameter to 5, corresponding to

DBLS-01-S, 02S, 03S, 06s, 07S and other brushless drivers)

(6 pulses a turn for a single pair of poles, two parameters need to be changed, P002 to 3 and P003 to 13, corresponding to brushless drivers such as the DBLS-01)

P003 10 Display of the fine adjustment of the speed (not recommended for modification)

P004 40 Parameter (not recommended for modification)

\*\*\*\*\*

**P014** C8 Display of the fine adjustment of the speed (not recommended for modification)

**P015** 07 Parameter (not recommended for modification)

There are 4 keys below the digital tube.

The first button is the return button, the second is the increase button, the third is the decrease button and the fourth is the parameter entry button.

Physical view of the control box:

