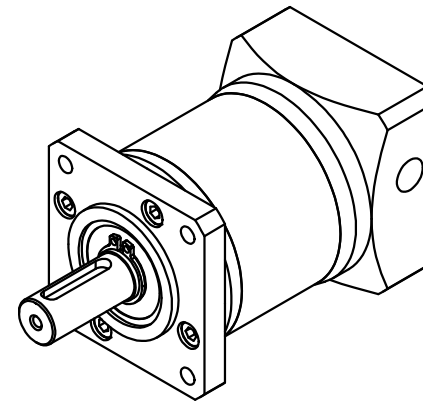
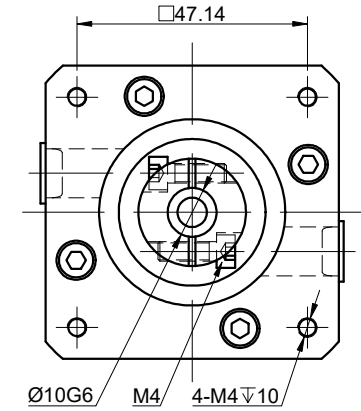
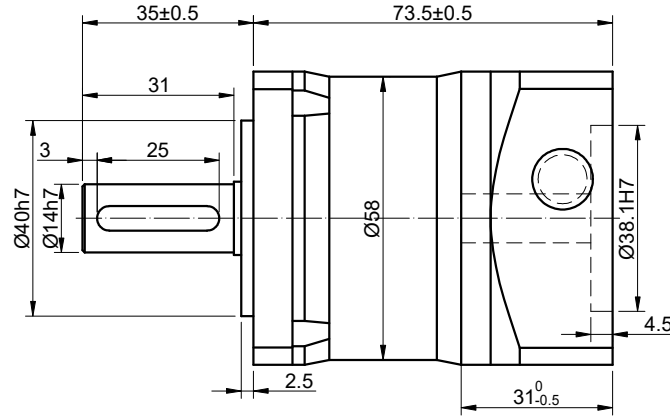
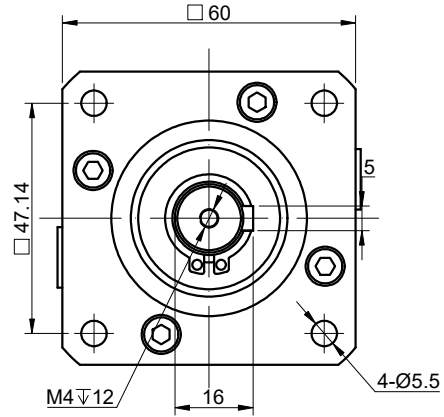


| REV. | REVISION RECORD | BY | DATE |
|------|-----------------|----|----------|
| 0 | ORIGIN | HW | 3.7.2024 |



| SPECIFICATION | CONNECTION | VALUE |
|--|------------|-------------------------|
| GEAR RATIO | | 5 |
| EFFICIENCY | | 96% |
| BACKLASH@NO-LOAD(arcmin) | | <=15 |
| MAX.PERMISSIBLE TORQUE(Nm)[lb-in] | | 28.00[247.82] |
| MOMENT PERMISSIBLE TORQUE(Nm)[lb-in] | | 56.00[495.64] |
| SHAFT MAXIMUM AXIAL LOAD(N) | | 200 |
| SHAFT MAXIMUM RADIAL LOAD(N) | | 400 |
| GEARBOX MATCHING MOTOR'S INPUT SHAFT LENGTH (mm) | | 12-31 |
| RATED INPUT SPEED(RPM) | | 3000 |
| MAX. INPUT SPEED(RPM) | | 6000 |
| NOISE(dB) | | <=65 |
| WATERPROOF RATING | | IP54 |
| LIFE(h) | | 20000 |
| WORKING TEMPERATURE | | -20°C~150°C[-4°F~302°F] |

DIMENSIONS ARE IN MILLIMETERS.
TOLERANCES AS BELOW:
DECIMALS ANGLES
X ±0.5 ±2°
X.X ±0.25
X.XX ±0.13

| | |
|------------------------|----------|
| THIRD ANGLE PROJECTION | |
| SIGNATURE | DATE |
| DRN | HW |
| APVD | LDJ |
| | 3.7.2024 |
| | 3.7.2024 |

| | | | | | | | | | | |
|-----------------------|---|-------|-----|---------|-------|--|--|--|--|--|
| STEPPERONLINE® | | | | | | | | | | |
| PLANETARY GEARBOX | | | | | | | | | | |
| EG23-G5-D10 | | | | | | | | | | |
| REV. | 0 | SCALE | 2:3 | DWG NO. | A1788 | | | | | |