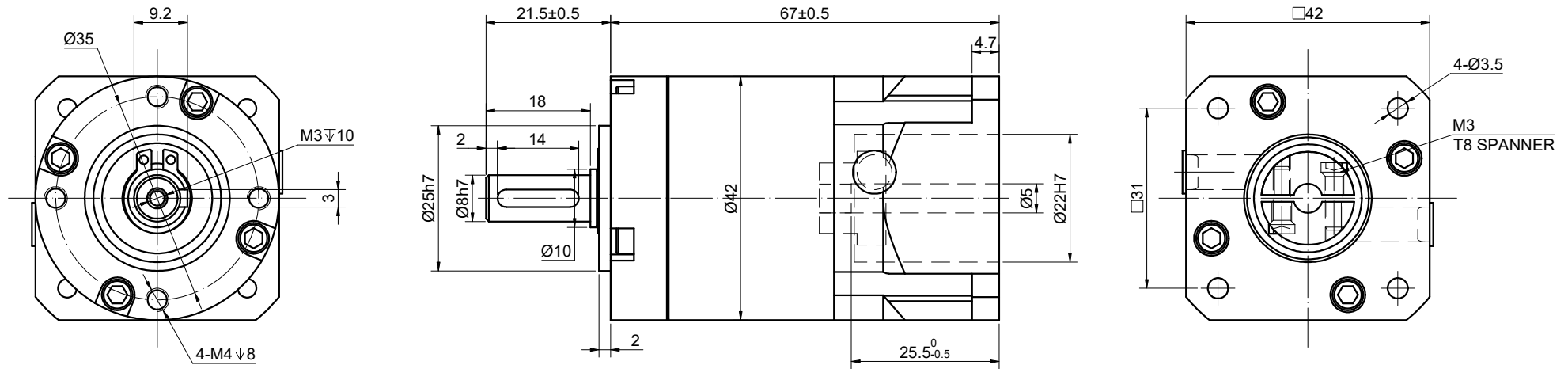


REV.	REVISION RECORD	BY	DATE
0	ORIGIN	HW	3.8.2024



SPECIFICATION	CONNECTION	VALUE
GEAR RATIO		100
EFFICIENCY		94%
BACKLASH@NO-LOAD(arcmin)		≤ 20
MAX.PERMISSIBLE TORQUE(Nm)[lb-in]		5.00[44.25]
MOMENT PERMISSIBLE TORQUE(Nm)[lb-in]		10.00[88.51]
SHAFT MAXIMUM AXIAL LOAD(N)		100
SHAFT MAXIMUM RADIAL LOAD(N)		300
GEARBOX MATCHING MOTOR'S INPUT SHAFT LENGTH (mm)		21.5-25
RATED INPUT SPEED(RPM)		3000
MAX. INPUT SPEED(RPM)		6000
NOISE(dB)		≤ 65
WATERPROOF RATING		IP54
LIFE(h)		20000
WORKING TEMPERATURE		$-20^{\circ}\text{C} \sim 150^{\circ}\text{C} [-4^{\circ}\text{F} \sim 302^{\circ}\text{F}]$

DIMENSIONS ARE IN MILLIMETERS.
TOLERANCES AS BELOW:
DECIMALS ANGLES
X ± 0.5 $\pm 2^{\circ}$
X.X ± 0.25
X.XX ± 0.13

		STEPPERONLINE®							
		PLANETARY GEARBOX							
SIGNATURE		DATE		EG17-G100					
DRN	HW	3.8.2024		REV.	0	SCALE	2:3	DWG NO.	A1770