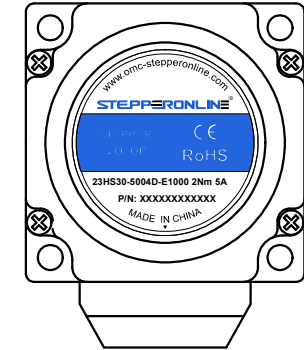
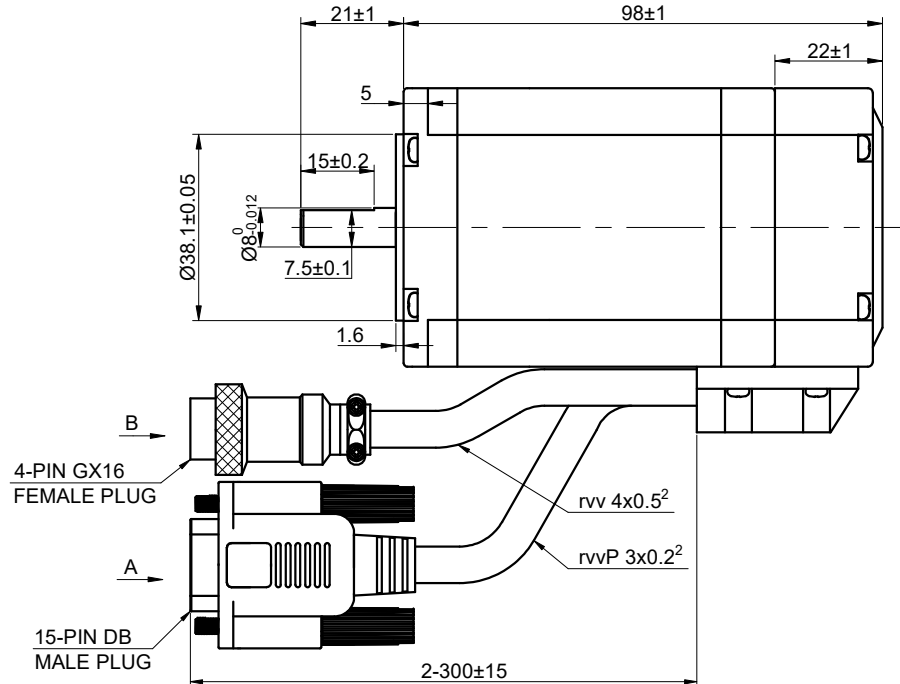
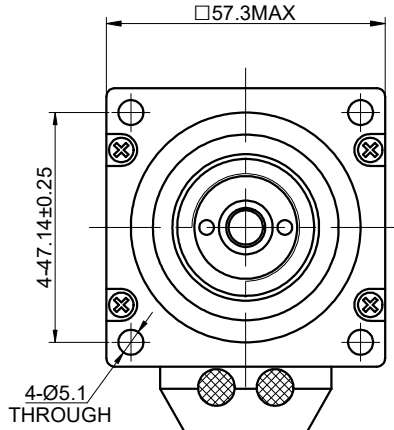


MODEL NO.	23HS30-5004D-E1000	DWG NO.	A1267
-----------	--------------------	---------	-------

REV.	REVISION RECORD	BY	DATE
0	ORIGIN	PJ	5.24.2023

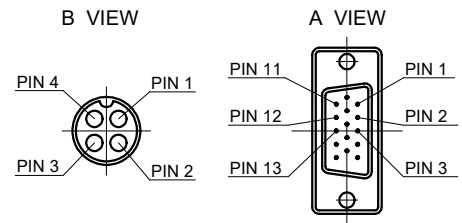
CUSTOMER'S MODEL: NO MODEL  
END COVER COLOR: BLACK



P/N: XXXXXXXXXXXXX  
YEAR  
MONTH  
DATE  
MOTOR NUMBER

- COMMENT:
- 1.DYNAMIC AXIAL LOAD: 15N MAX
  - 2.DYNAMIC RADIAL LOAD @ SHAFT LENGTH 20mm: 75N MAX
  - 3.TMBF 6000h OR MORE @ 24V/300RPM
  - 4.INSULATION RESISTANCE (NORMAL TEMPERATURE AND HUMIDITY): 100 Mohm
  - 5.DIELECTRIC STRENGTH 500VAC FOR 1MIN.(BETWEEN THE MOTOR COILS AND THE MOTOR CASE )

CONNECTION	BIPOLAR
SPECIFICATION	
AMPS/PHASE	5.00
RESISTANCE/PHASE(Ohms)@25°C	0.42±10%
INDUCTANCE/PHASE(mH)@1KHz	1.70±20%
HOLDING TORQUE(Nm)[lb-in]	2.00 [17.71]
STEP ANGLE(°)	1.80
STEP ACCURACY(NON-ACCUM)	±5.00%
ROTOR INERTIA(g-cm²)	480 REF
DETENT TORQUE(g-cm)	700 REF
AMBIENT TEMPERATURE	-10°C~50°C[14°F~122°F]
INSULATION CLASS	B 130°C[266°F]
TEMPERATURE RISE	MAX.80°C



ENCODER RESOLUTION:1000PPR(4000CPR)						
15-PIN DB MALE PLUG	1	2	3	11	12	13
DESCRIPTION	EA+	VCC	GND	EB+	EB-	EA-

MOTOR CONNECTION		
GX16 PIN NO	BIPOLAR	WINDING
1	A+	
2	A-	
3	B+	
4	B-	

FULL STEP 2 PHASE-Ex.,WHEN FACING MOUNTING END (X)					DIMENSIONS ARE IN MILLIMETERS.	
STEP	A+	B+	A-	B-	CCW	TOLERANCES AS BELOW:
1	+	+	-	-		DECIMALS ±0.5
2	-	+	+	-		ANGLES ±2°
3	-	-	+	+		X ±0.25
4	+	-	-	+		X.XX ±0.13
					THIRD ANGLE PROJECTION	

THIS DOCUMENT SHALL NOT BE REPRODUCED NOR SHALL THE INFORMATION CONTAINED HEREIN BE USED BY OR DISCLOSED TO OTHERS UNLESS EXPRESSLY AUTHORIZED IN BY WRITING STEPPERONLINE.			SIGNATURE	DATE
			DRN	PJ
			APVD	5.24.2023

<b>STEPPER MOTOR</b>									
<b>23HS30-5004D-E1000</b>									
REV.	0	SCALE	2:3	DWG NO.	A1267				