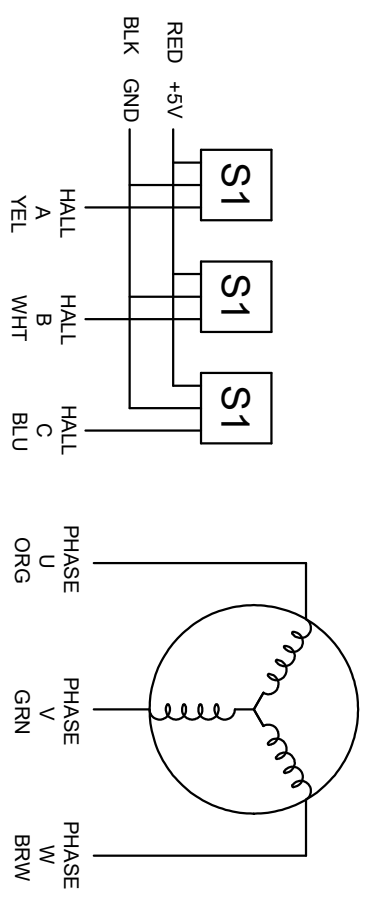



SPECIFICATION	VALUE
NO. of PHASES	3
NO. of POLES	4
RATED VOLTAGE(V)	24
RATED CURRENT(A)	10.4±10%
RATED POWER(W)	172
RATED SPEED w/o GEARBOX(RPM)	3500±10%
RATED TORQUE (N.m)	25
GEAR RATIO	100
EFFICIENCY	65.00%REF
MAX. PERMISSIBLE TORQUE(Nm)[lb-in]	25[221.27]
BACKLASH@NO-LOAD(°)	2.4
SENSOR	HALL SENSOR
INSULATION CLASS	CLASS B
INSULATION RESISTANCE	100MΩ MIN @ 500VDC
DIELECTRIC STRENGTH TEST	500VDC for 1 MINUTE
BEARING TYPE	NMB BALL BEARING. C3



HALL LEAD: UL1007 26AWG

PHASE LEAD: UL1007 18AWG



BRUSHLESS DC MOTOR

57BLR70-24-02-HG100

SCALE	1.5:1	SIGNATURE	DATE	
			12.8.2023	
		APVD		
		CHKD		
		DRN		