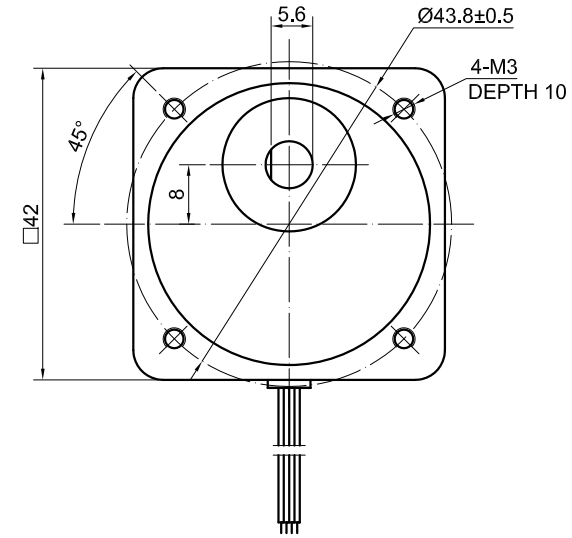
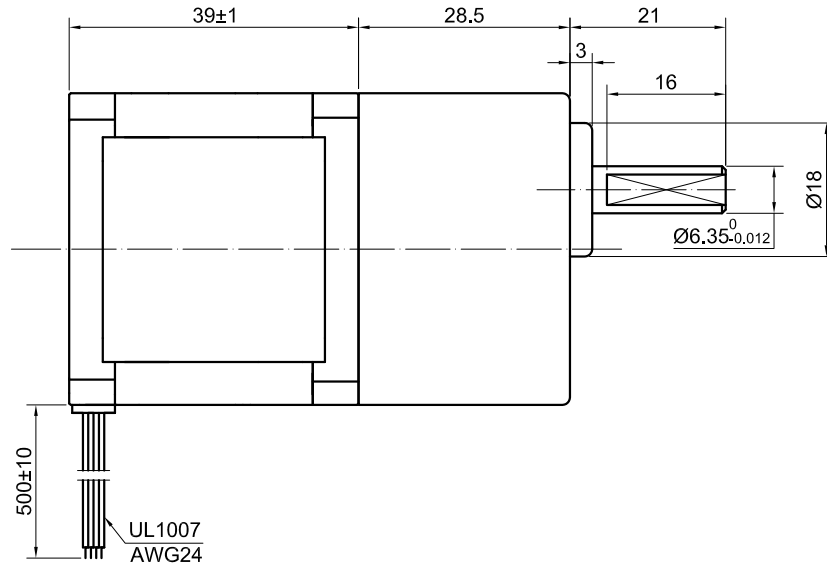


MOTOR ( w/o GEARBOX) END COVER COLOR : BLACK

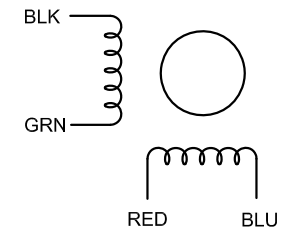


SPECIFICATION	CONNECTION	BIPOLAR
AMPS/PHASE		1.68
RESISTANCE/PHASE(Ohms)@25°C		1.65±10%
INDUCTANCE/PHASE(mH)@1KHz		3.20±20%
HOLDING TORQUE(Nm)[lb-in]		0.36[3.12]
GEAR RATIO		10
EFFICIENCY		90.00%
STEP ANGLE w/o GEARBOX(°)		1.80
GEARBOX SHAFT OUTPUT ROTATION DIRECTION		CONTRARY TO MOTOR ( w/o GEARBOX)
WEIGHT(Kg)[lb]		—
INSULATION RESISTANCE 100 Mohm (UNDER NORMAL TEMPERATURE AND HUMIDITY)		
TEMPERATURE RISE:MAX.80°C ( MOTOR STANDSTILL;FOR 2PHASE ENERGIZED )		
AMBIENT TEMPERATURE -10°C~50°C[14°F~122°F]		
INSULATION CLASS B 130°C[266°F]		
DIELECTRIC STRENGTH 500VAC FOR 1MIN.(BETWEEN THE MOTOR COILS AND THE MOTOR CASE )		

TYPE OF CONNECTION (EXTERN)		MOTOR	
PIN NO	BIPOLAR	LEADS	WINDING
1	A —	BLK	
2	A\ —	GRN	
3	B —	RED	
4	B\ —	BLU	

FULL STEP 2 PHASE-Ex.(w/o GEARBOX),  
WHEN FACING MOUNTING END (X)

STEP	A	B	A\	B\		
1	+	+	-	-	↓	CCW
2	-	+	+	-		↑
3	-	-	+	+		
4	+	-	-	+		



**STEPPERONLINE**®

APVD		6.3.2021
CHKD		
1:1	DRN	
SCALE	SIGNATURE	DATE

**STEPPER MOTOR**

**17HS15-1684S-SG10**