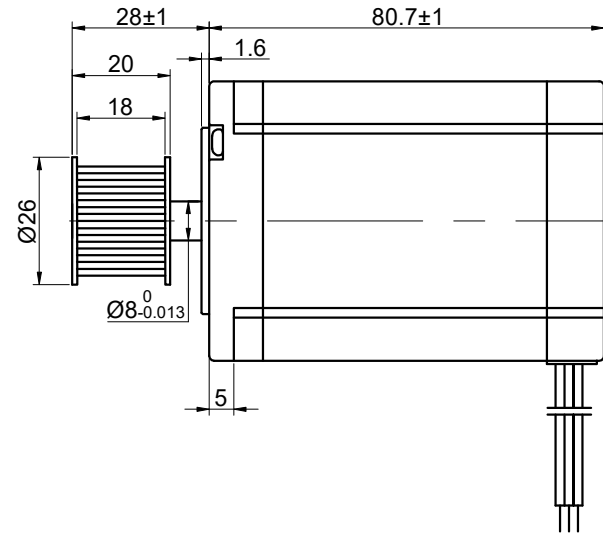
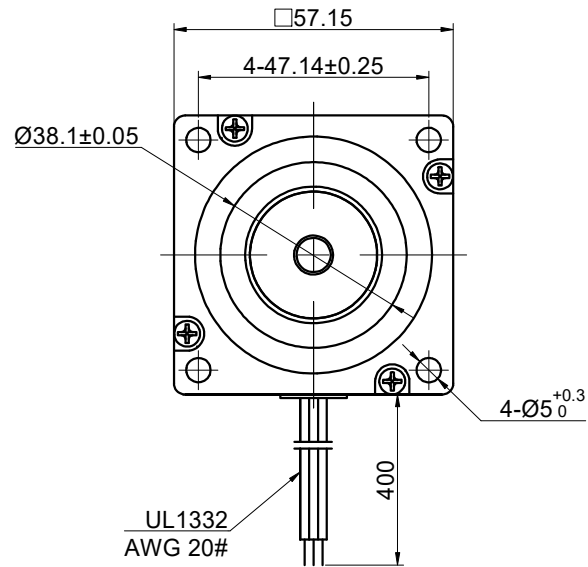


MODEL NO. 23HT32-5803S-C1 DWG NO. A2730

CUSTOMER'S MODEL: NO MODEL
END COVER COLOR: BLACK

REV.	REVISION RECORD	BY	DATE
0	ORIGIN	ZPJ	12.21.2023
1	RENAME MOTOR	ZPJ	1.29.2024



CONNECTION	BIPOLAR
SPECIFICATION	BIPOLAR
PHASE	3
AMPS/PHASE	5.80
RESISTANCE/PHASE(Ohms)@25°C	0.75±10%
INDUCTANCE/PHASE(mH)@1KHz	1.70±20%
HOLDING TORQUE(Nm)[lb-in]	1.70[15.05]
STEP ANGLE(°)	1.20
STEP ACCURACY(NON-ACCUM)	±5.00%
ROTOR INERTIA(g-cm²)	520
WEIGHT(Kg)[lb]	—
AMBIENT TEMPERATURE	0°C~50°C[32°F~122°F]
INSULATION CLASS	B 130°C[266°F]
TEMPERATURE RISE	MAX.80°C

EXCITATION SEQUENCE, WHEN FACING MOUNTING END (X)						
STEP	1	2	3	4	5	6
U	+		-	-		+
V	-	-		+	+	
W		+	+		-	-

PULLEY SPECIFICATIONS		
NUMBER OF TEETH	Z	24
MODULUS	m	3
MATERIAL	COPPER	

DIMENSIONS ARE IN MILLIMETERS.
TOLERANCES AS BELOW:
DECIMALS ANGLES
X ±0.5 ±2°
X.X ±0.25
X.XX ±0.13

THIRD ANGLE PROJECTION

MOTOR CONNECTION			
PIN NO	BIPOLAR	LEADS	WINDING
1	U	GRN	
2	V	BLU	
3	W	RED	

STEPPERONLINE®

STEPPER MOTOR

23HT32-5803S-C1

THIS DOCUMENT SHALL NOT BE REPRODUCED NOR SHALL THE INFORMATION CONTAINED HEREIN BE USED BY OR DISCLOSED TO OTHERS UNLESS EXPRESSLY AUTHORIZED IN BY WRITING STEPPERONLINE.

SIGNATURE		DATE
DRN	ZPJ	1.29.2024
APVD	LDJ	1.29.2024

REV.	0	SCALE	2:3	DWG NO.	A2730
------	---	-------	-----	---------	-------