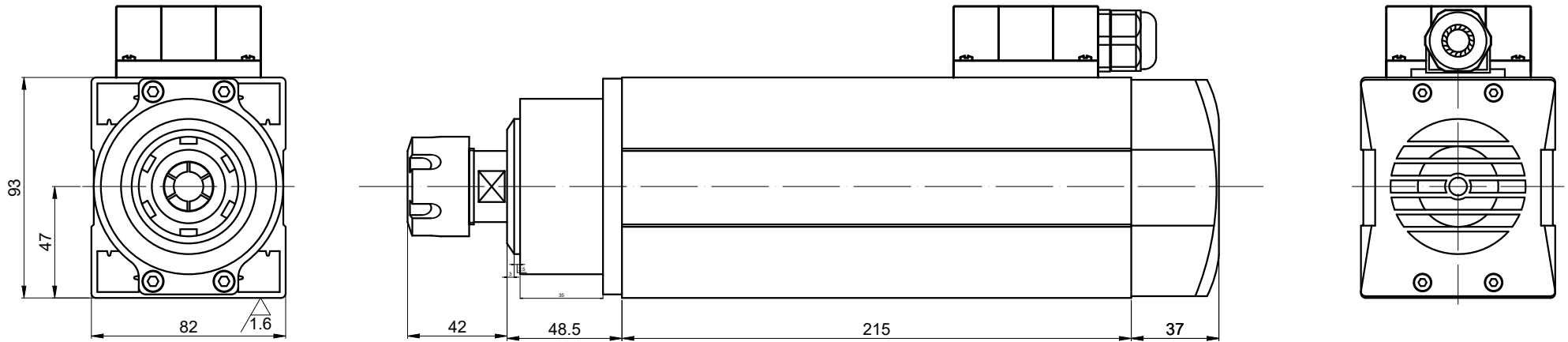
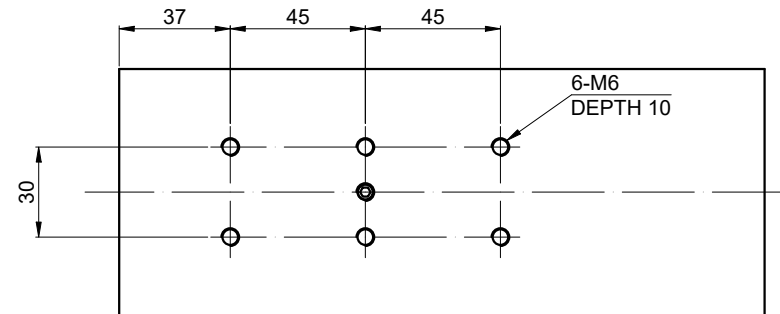


REV.	REVISION RECORD	BY	DATE
0	ORIGIN	YSX	10.19.2023



B VIEW BOTTOM OF SHELL



SPECIFICATION	CONNECTION	VALUE
POWER (Kw)		3.5
VOLTAGE (VAC)		380
RATED CURRENT (A)		8.8
MAXIMUM SPEED (RPM)		18000
FREQUENCY (Hz)		300
NUT MODEL		ER25
COLLET (mm)		Ø6、Ø6.35、Ø12、Ø12.7
RUNOUT OFF (mm)		LESS THAN 0.005
BEARINGS		2x7007(P4) + 2x7002C(P4)
COOLING		AIR COOLED
MATERIAL		STAINLESS STEEL
LUBRICATION		GREASE
WEIGHT (Kg) [lb]		8.85 [19.51]

DIMENSIONS ARE IN MILLIMETERS.  
TOLERANCES AS BELOW:  
DECIMALS ANGLES  
X ±0.5 ±2°  
X.X ±0.25  
X.XX ±0.13

THIRD ANGLE PROJECTION		
SIGNATURE		DATE
DRN	LJ	6.23.2025
APVD	YSX	6.23.2025

**STEPPERONLINE®**

SPINDLEMOTOR

GDZ93×82-3.5C4

REV.	1	SCALE	1:1	DWG NO.	A1846
------	---	-------	-----	---------	-------