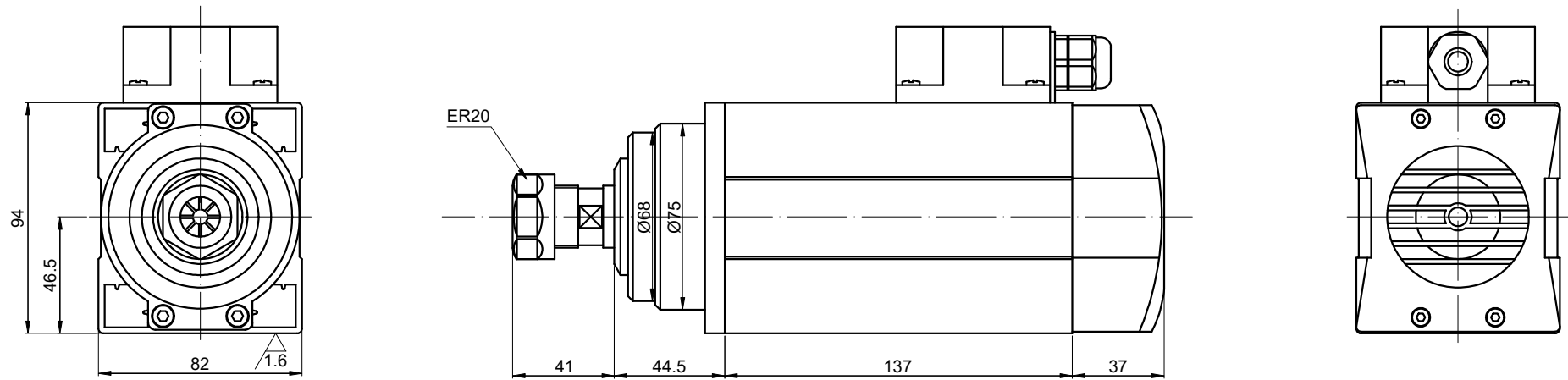
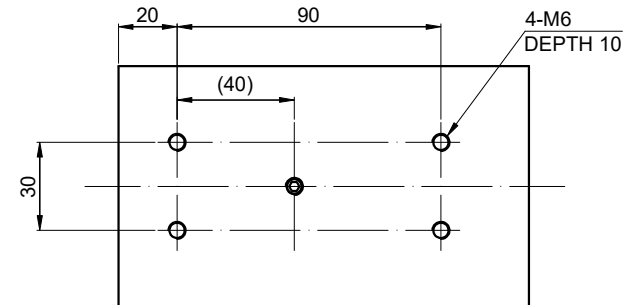


REV.	REVISION RECORD	BY	DATE
0	ORIGIN	ZPJ	8.11.2025



B

B VIEW BOTTOM OF SHELL



SPECIFICATION	CONNECTION	VALUE
POWER (Kw)		1.5
VOLTAGE (VAC)		380
RATED CURRENT (A)		3.8
MAXIMUM SPEED (RPM)		18000
FREQUENCY (Hz)		300
NUT MODEL		ER20
COLLET (mm)		Ø6、Ø6.35
RUNOUT OFF (mm)		LESS THAN 0.01
BEARINGS		2x7005 + 2x7002
COOLING		AIR COOLED
MATERIAL		STAINLESS STEEL
LUBRICATION		GREASE
WEIGHT (Kg) [lb]		---

DIMENSIONS ARE IN MILLIMETERS.  
TOLERANCES AS BELOW:  
DECIMALS ANGLES  
X ±0.5 ±2°  
X.X ±0.25  
X.XX ±0.13

THIRD ANGLE PROJECTION



SIGNATURE

DATE

DRN

ZPJ

8.11.2025

APVD

LDJ

8.11.2025

**STEPPERONLINE®**

**SPINDLEMOTOR**

**GDZ93×82-1.5C4**