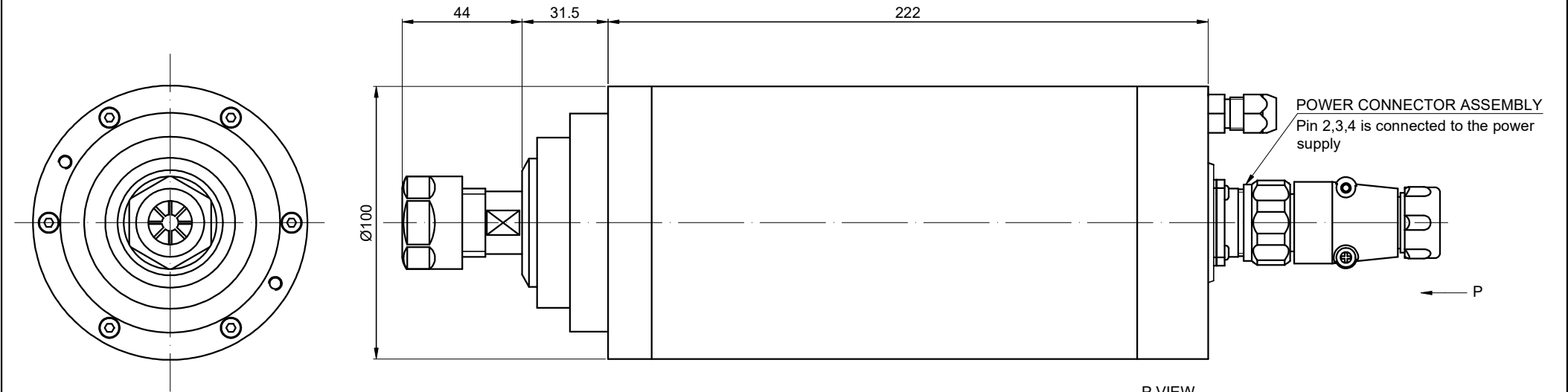


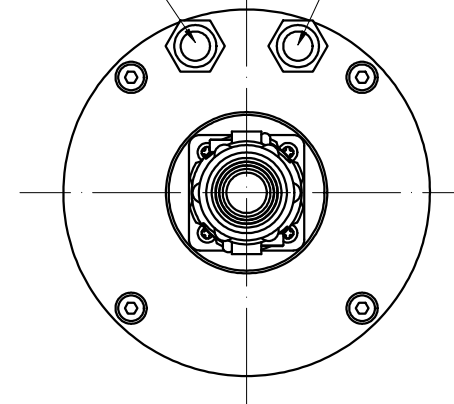
CUSTOMER'S MODEL: NO MODEL



COOLING WATER INLET
HOSE Ø6×Ø8

P VIEW

COOLING WATER OUTLET
HOSE Ø6×Ø8



| SPECIFICATION | VALUE |
|---------------------|---------------------------|
| POWER (Kw) | 3.0 |
| VOLTAGE (VAC) | 220 |
| RATED CURRENT (A) | 12 |
| MAXIMUM SPEED (RPM) | 24000 |
| FREQUENCY (Hz) | 400 |
| NUT MODEL | ER20 |
| COLLET (mm) | Ø6、Ø6.35 |
| RUNOUT OFF (mm) | LESS THAN 0.005 |
| BEARINGS | 2x7005C(P4) + 1x7003C(P4) |
| COOLING | WATER COOLED |
| MATERIAL | STAINLESS STEEL |
| EFFICIENCY | GREASE |
| WEIGHT (Kg) [lb] | 9.1 [20.6] |

THIS DOCUMENT SHALL NOT BE REPRODUCED NOR SHALL THE INFORMATION CONTAINED HEREIN BE USED BY OR DISCLOSED TO OTHERS UNLESS EXPRESSLY AUTHORIZED IN BY WRITING STEPPERONLINE.

DIMENSIONS ARE IN MILLIMETERS.
TOLERANCES AS BELOW:
DECIMALS ANGLES
X ±0.5 ±2°
X.X ±0.25
X.XX ±0.13

STEPPERONLINE®

SPINDLE MOTOR

GDZ100-3.0B

THIRD ANGLE PROJECTION



SIGNATURE

DATE

| | | |
|------|-----|-----------|
| DRN | ZPJ | 8.15.2024 |
| APVD | MYX | 8.15.2024 |