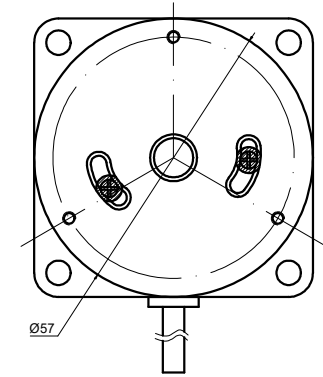
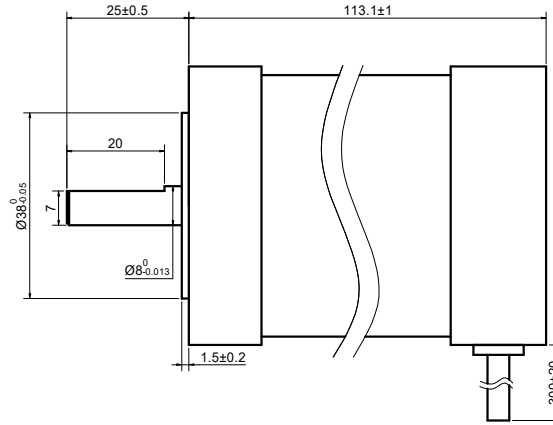
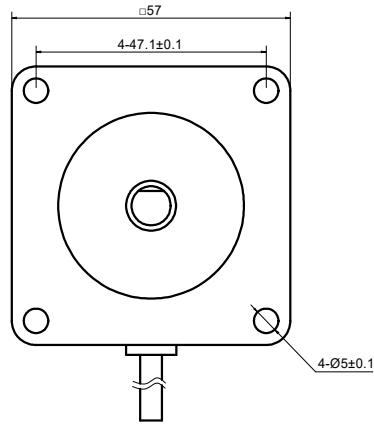
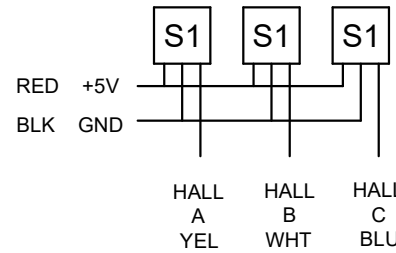


CUSTOMER'S MODEL: NO MODEL  
 END COVER COLOR: GRAY

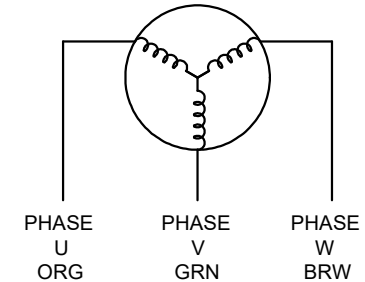
REV.	REVISION RECORD	BY	DATE
0	ORIGIN	ZPJ	9.26.2023



SPECIFICATION	VALUE
NO. of PHASES	3
NO. of POLES	4
RESISTANCE/PHASE(Ohms)@25°C	0.24±10%
INDUCTANCE/PHASE(mH)@1KHz	0.37±20%
RATED VOLTAGE(V)	36
RATED TORQUE(mN.m)	440
RATED POWER(W)	184
RATED SPEED(RPM)	4000±10%
RATED CURRENT(A)	7.30±10%
HALL LEAD STYLE	UL 1007 AWG26
PHASE LEAD STYLE	UL 1007 AWG18
BACK EMF(V/krpm)	4.1
SENSOR	HALL
AMBIENT TEMPERATURE	-10°C~50°C[14°F~122°F]
INSULATION CLASS	B 130°C[266°F]
TEMPERATURE RISE	MAX.80°C



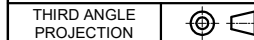
HALL LEAD: UL 1007 26AWG



PHASE LEAD: UL1007 18AWG

COMMENT:  
 1.DYNAMIC AXIAL LOAD: 10N MAX  
 2.DYNAMIC RADIAL LOAD @ SHAFT LENGTH 20mm: 20N MAX  
 3.INSULATION RESISTANCE (NORMAL TEMPERATURE AND HUMIDITY): 100 Mohm  
 4.DIELECTRIC STRENGTH: AC600V CUT OFF CURRENT 5mA FOR 1S

DIMENSIONS ARE IN MILLIMETERS.  
 TOLERANCES AS BELOW:  
 DECIMALS ANGLES  
 X ±0.5 ±2°  
 X.X ±0.25  
 X.XX ±0.13



**STEPPERONLINE®**

**BRUSHLESS DC MOTOR**

57BLR110-36-01

THIS DOCUMENT SHALL NOT BE REPRODUCED NOR SHALL THE INFORMATION CONTAINED HEREIN BE USED BY OR DISCLOSED TO OTHERS UNLESS EXPRESSLY AUTHORIZED IN BY WRITING STEPPERONLINE.

SIGNATURE		DATE
DRN	ZPJ	9.26.2023
APVD	LDJ	9.26.2023

REV.	0	SCALE	1:1	DWG NO.	A1642
------	---	-------	-----	---------	-------