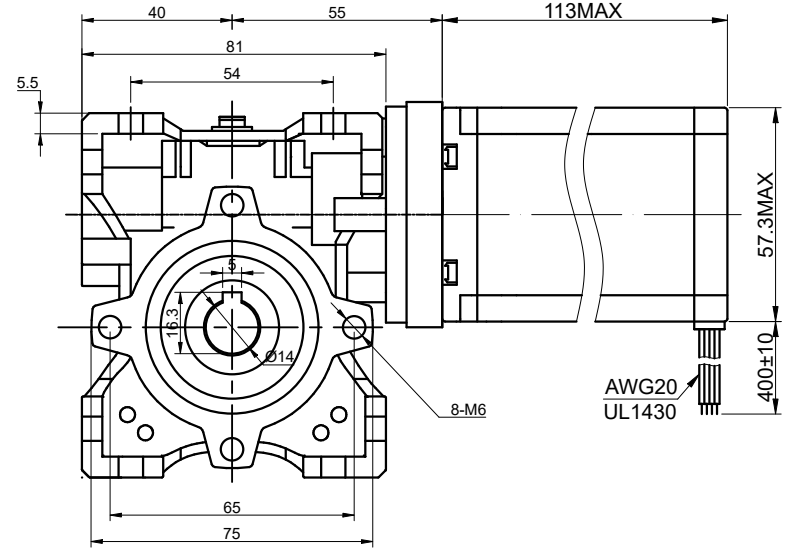
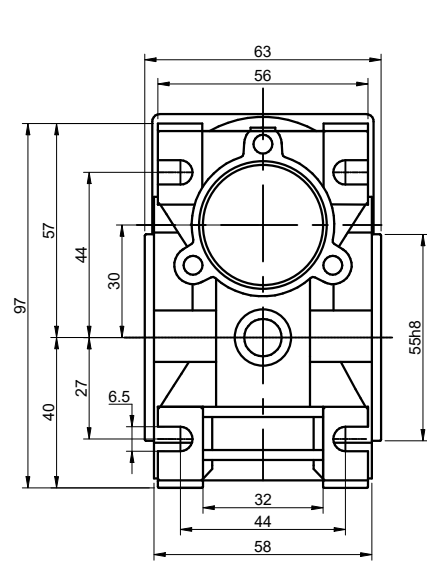


CUSTOMER'S MODEL: NO MODEL
END COVER COLOR: GRAY

REV.	REVISION RECORD	BY	DATE
0	ORIGIN	MYX	3.5.2026



SPECIFICATION	CONNECTION	BIPOLAR
AMPS/PHASE		4.20
RESISTANCE/PHASE(Ohms)@25°C		0.88±10%
INDUCTANCE/PHASE(mH)@1KHz		3.40±20%
HOLDING TORQUE w/o GEARBOX(Nm)[lb-in]		3.00[26.55]
STEP ANGLE w/o GEARBOX(°)		1.80±5.00%
GEAR RATIO		20
MAX.PERMISSIBLE TORQUE(Nm)		18.00
EFFICIENCY		65%
BACKLASH@NO-LOAD(°)		1
OUTPUT MAX. RADIAL LOAD(kN)		0.94
AMBIENT TEMPERATURE		-10°C~50°C[14°F~122°F]
INSULATION CLASS		B 130°C[266°F]
TEMPERATURE RISE		MAX.80°C

COMMENT:
 1.DYNAMIC AXIAL LOAD: 100N MAX
 2.DYNAMIC RADIAL LOAD @ SHAFT LENGTH 20mm: 250N MAX
 3.TMBF 6000h OR MORE @ 24V/300RPM
 4.INSULATION RESISTANCE (NORMAL TEMPERATURE AND HUMIDITY): 100 Mohm
 5.DIELECTRIC STRENGTH 500VAC FOR 1MIN.(BETWEEN THE MOTOR COILS AND THE MOTOR CASE)



MOTOR CONNECTION(EHR-6)			
PIN NO	BIPOLAR	LEADS	WINDING
1	A+	BLK	
2	A-	GRN	
3	B+	RED	
4	B-	BLU	

STEP	A+	B+	A-	B-		
1	+	+	-	-		DIMENSIONS ARE IN MILLIMETERS. TOLERANCES AS BELOW: DECIMALS ANGLES X ±0.5 X.X ±0.25 X.XX ±0.13
2	-	+	+	-		
3	-	-	+	+		
4	+	-	-	+		

STEPPERONLINE®

STEPPER MOTOR

23HS45-4204S-RVS30-G20

FULL STEP 2 PHASE-Ex.,WHEN FACING MOUNTING END (X)		SIGNATURE		DATE	
CCW	↓	DRN	MYX	3.5.2026	
CW	↑	APVD	LJ	3.5.2026	

THIS DOCUMENT SHALL NOT BE REPRODUCED NOR SHALL THE INFORMATION CONTAINED HEREIN BE USED BY OR DISCLOSED TO OTHERS UNLESS EXPRESSLY AUTHORIZED IN BY WRITING STEPPERONLINE.