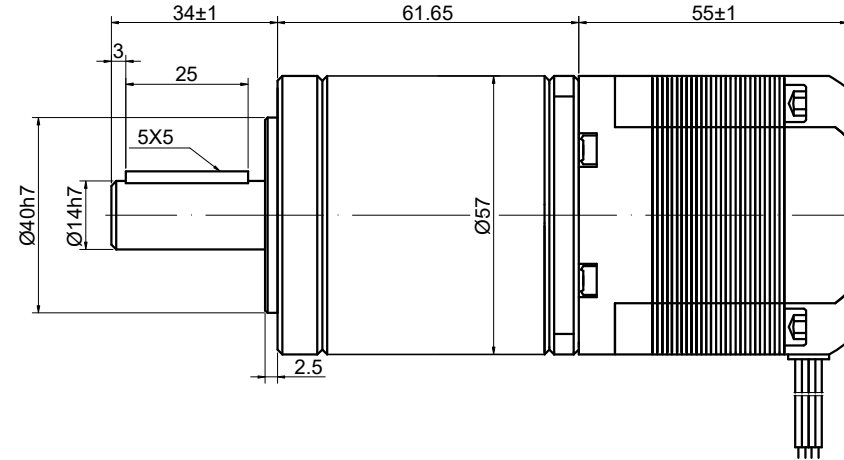
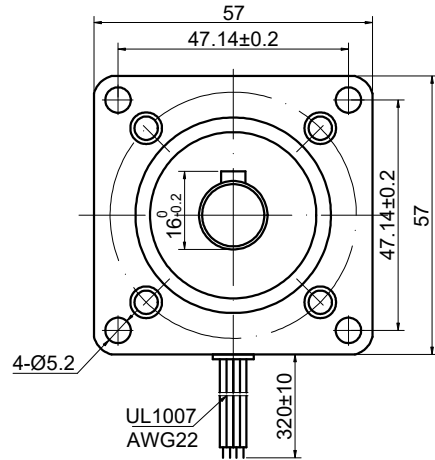


CUSTOMER'S MODEL: NO MODEL
END COVER COLOR: GRAY

| REV. | REVISION RECORD | BY | DATE |
|------|-----------------|----|-----------|
| 0 | ORIGIN | HW | 5.17.2024 |



| SPECIFICATION | CONNECTION | BIPOLAR |
|---------------------------------------|------------|------------------------|
| AMPS/PHASE | | 2.80 |
| RESISTANCE/PHASE(Ohms)@25°C | | 0.90±10% |
| INDUCTANCE/PHASE(mH)@1KHz | | 2.80±20% |
| HOLDING TORQUE w/o GEARBOX(Nm)[lb-in] | | 1.03[9.12] |
| STEP ANGLE w/o GEARBOX(°) | | 1.80±5.00% |
| GEAR RATIO | | 15 |
| MAX.PERMISSIBLE TORQUE(Nm) | | 20.00 |
| MOMENT PERMISSIBLE TORQUE(Nm) | | 40.00 |
| EFFICIENCY | | 85% |
| BACKLASH@NO-LOAD(arcmin) | | <=50 |
| LIFE(h) | | 6000 |
| AMBIENT TEMPERATURE | | -10°C~50°C[14°F~122°F] |
| INSULATION CLASS | | B 130°C[266°F] |
| TEMPERATURE RISE | | MAX.80°C |

COMMENT:
 1.DYNAMIC AXIAL LOAD: 100N MAX
 2.DYNAMIC RADIAL LOAD @ SHAFT LENGTH 20mm: 250N MAX
 3.TMBF 6000h OR MORE @ 24V/300RPM
 4.INSULATION RESISTANCE
 (NORMAL TEMPERATURE AND HUMIDITY): 100 Mohm
 5.DIELECTRIC STRENGTH 500VAC FOR 1MIN.(BETWEEN THE MOTOR COILS AND THE MOTOR CASE)

| MOTOR CONNECTION(EHR-6) | | | |
|-------------------------|---------|-------|---------|
| PIN NO | BIPOLAR | LEADS | WINDING |
| 1 | A+ | BLK | |
| 2 | A- | GRN | |
| 3 | B+ | RED | |
| 4 | B- | BLU | |

| FULL STEP 2 PHASE-Ex.,WHEN FACING MOUNTING END (X) | | | | | CCW | CW | DIMENSIONS ARE IN MILLIMETERS. TOLERANCES AS BELOW: DECIMALS ANGLES X ±0.5 ±2° X.X ±0.25 X.XX ±0.13 |
|--|----|----|----|----|-----|----|--|
| STEP | A+ | B+ | A- | B- | | | |
| 1 | + | + | - | - | | | |
| 2 | - | + | + | - | | | |
| 3 | - | - | + | + | | | |
| 4 | + | - | - | + | | | |

STEPPERONLINE®

STEPPER MOTOR

23HS22-2804S-HG15

THIS DOCUMENT SHALL NOT BE REPRODUCED NOR SHALL THE INFORMATION CONTAINED HEREIN BE USED BY OR DISCLOSED TO OTHERS UNLESS EXPRESSLY AUTHORIZED IN BY WRITING STEPPERONLINE.

| SIGNATURE | | DATE |
|-----------|----|-----------|
| DRN | HW | 5.17.2024 |
| APVD | SY | 5.20.2024 |

| REV. | 0 | SCALE | 1:1 | DWG NO. | A1173 |
|------|---|-------|-----|---------|-------|
|------|---|-------|-----|---------|-------|