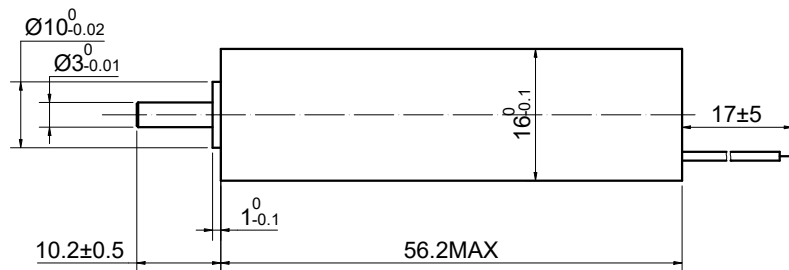
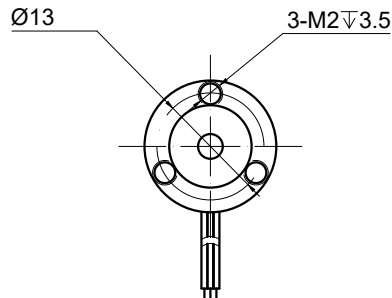


CUSTOMER'S MODEL: NO MODEL
 END COVER COLOR: BLACK

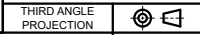
REV.	REVISION RECORD	BY	DATE
0	ORIGIN	LJ	8.12.2025



SPECIFICATION	VALUE
RATED VOLTAGE(V)	48
TERMINAL RESISTANCE(Ohms)	2.6
TERMINAL INDUCTANCE(mH)	0.14
NO LOAD SPEED(RPM)	40000
NO LOAD CURRENT(A)	0.12
RATED SPEED(RPM)	32000
RATED CURRENT(A)	0.90
RATED TORQUE(mNm)	10.2
RATED POWER(W)	34.18
THE GREATEST POWER OUTPUT(W)	218.67
EFFICIENCY(%)	84.53
TORQUE CONSTANT (mNm/A)	11.38
STALL TORQUE (mNm)	208.81
BACK-EMF CONSTANT (mV/RPM)	1.19
SPEED CONSTANT(RPM/V)	838.79
FRICTION TORQUE(mNm)	1.37
CURRENT CONSTANT(A/mNm)	0.09

- OPERATING TEMPERATURE RANGE:
-20°C~80°C[-4°F~176°F]
- WINDING MAX PERMISSIBLE:
180°C[356°F]
- NO. of POLES: 2

DIMENSIONS ARE IN MILLIMETERS.
 TOLERANCES AS BELOW:
 DECIMALS ANGLES
 X ±0.5 ±2°
 X.X ±0.25
 XXX ±0.13



THIS DOCUMENT SHALL NOT BE REPRODUCED
 NOR SHALL THE INFORMATION CONTAINED
 HEREIN BE USED BY OR DISCLOSED TO
 OTHERS UNLESS EXPRESSLY AUTHORIZED IN
 BY WRITING STEPPERONLINE.

SIGNATURE		DATE
DRN	LJ	8.13.2025
APVD	YSX	8.13.2025

STEPPERONLINE®

BRUSHLESS DC MOTOR

16CL56-48-P2-32000

REV.	0	SCALE	1:1	DWG NO.	A4872
------	---	-------	-----	---------	-------

