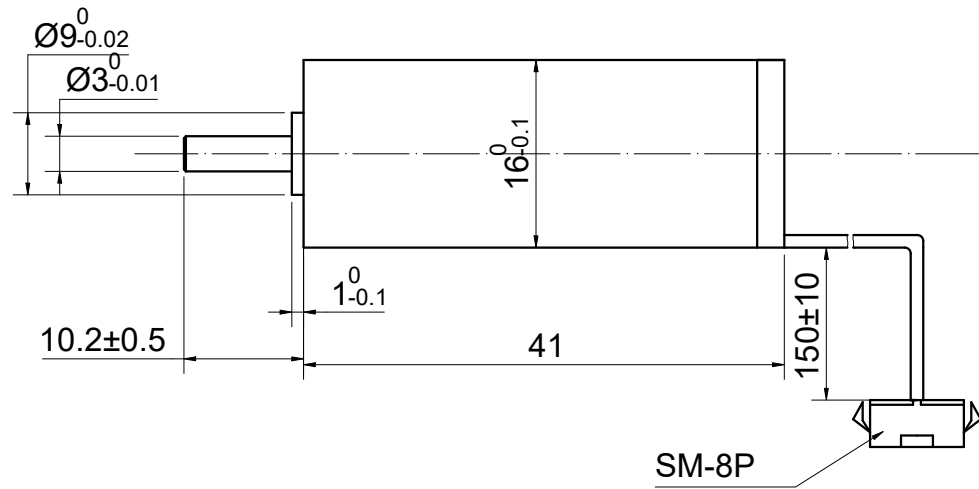
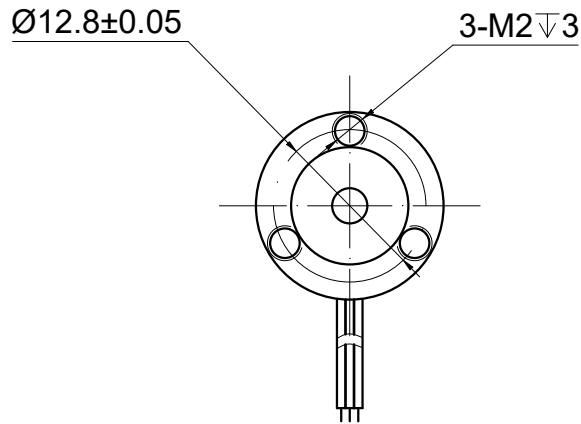


REV.	REVISION RECORD	BY	DATE
0	ORIGIN	LJ	8.12.2025

CUSTOMER'S MODEL: NO MODEL
 END COVER COLOR: BLACK

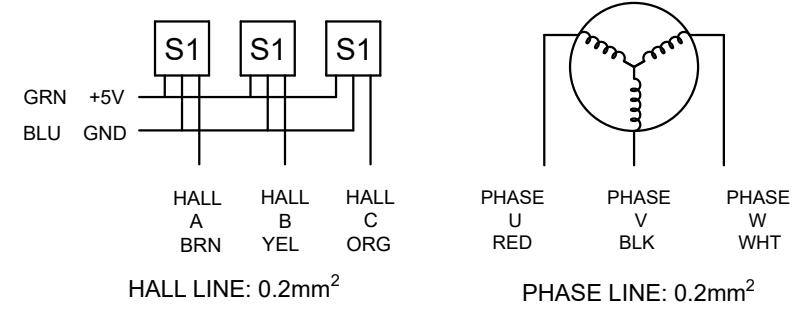


SPECIFICATION	VALUE
RATED VOLTAGE(V)	24
TERMINAL RESISTANCE(Ohms)	1.5
TERMINAL INDUCTANCE(mH)	0.11
NO LOAD SPEED(RPM)	50000
NO LOAD CURRENT(A)	0.26
RATED SPEED(RPM)	40000
RATED CURRENT(A)	1.60
RATED TORQUE(mNm)	7.2
RATED POWER(W)	30.16
THE GREATEST POWER OUTPUT(W)	92.91
EFFICIENCY(%)	76.13
TORQUE CONSTANT (mNm/A)	4.51
STALL TORQUE (mNm)	70.97
BACK-EMF CONSTANT (mV/RPM)	0.47
SPEED CONSTANT (RPM/V)	2117.75
FRICTION TORQUE(mNm)	1.17
CURRENT CONSTANT (A/mNm)	0.22

1. OPERATING TEMPERATURE RANGE:
 -20°C~80°C[-4°F~176°F]
 2. WINDING MAX PERMISSIBLE:
 180°C[356°F]
 3. NO. of POLES: 2

DIMENSIONS ARE IN MILLIMETERS.
 TOLERANCES AS BELOW:
 DECIMALS ANGLES
 X ±0.5 ±2°
 X.X ±0.25
 X.XX ±0.13

THIRD ANGLE PROJECTION



STEPPERONLINE®

BRUSHLESS DC MOTOR

16CL41-24-P2-40000

REV.	0	SCALE	1:1	DWG NO.	A4868
------	---	-------	-----	---------	-------

THIS DOCUMENT SHALL NOT BE REPRODUCED NOR SHALL THE INFORMATION CONTAINED HEREIN BE USED BY OR DISCLOSED TO OTHERS UNLESS EXPRESSLY AUTHORIZED IN BY WRITING STEPPERONLINE.		SIGNATURE	DATE
DRN	LJ	8.4.2025	
APVD	YSX	8.4.2025	