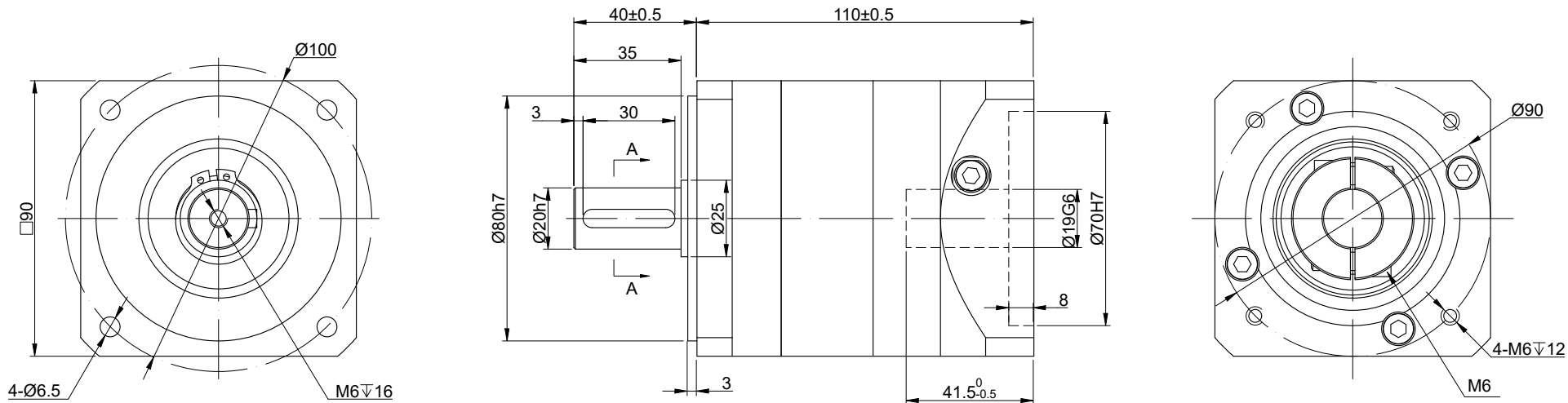


REV.	REVISION RECORD	BY	DATE
0	ORIGIN	MYX	8.7.2025



SPECIFICATION	CONNECTION	VALUE
GEAR RATIO		7
EFFICIENCY		96%
BACKLASH@NO-LOAD(arcmin)		<=10
MAX.PERMISSIBLE TORQUE(Nm)[lb-in]		60.00[531.04]
MOMENT PERMISSIBLE TORQUE(Nm)[lb-in]		120.00[1062.08]
SHAFT MAXIMUM AXIAL LOAD(N)		800
SHAFT MAXIMUM RADIAL LOAD(N)		1000
GEARBOX MATCHING MOTOR'S INPUT SHAFT LENGTH (mm)		24~41
RATED INPUT SPEED(RPM)		3000
MAX. INPUT SPEED(RPM)		6000
NOISE(dB)		<=55
WATERPROOF RATING		IP54
LIFE(h)		20000
WORKING TEMPERATURE		-20°C~150°C[-4°F~302°F]

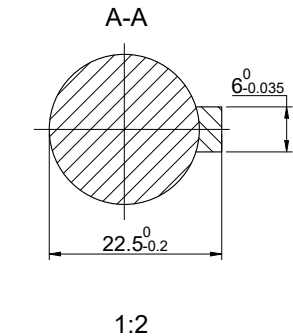
DIMENSIONS ARE IN MILLIMETERS.
 TOLERANCES AS BELOW:
 DECIMALS ANGLES
 X ±0.5 ±2°
 X.X ±0.25
 X.XX ±0.13

THIRD ANGLE PROJECTION

SIGNATURE DATE

DRN MYX 8.7.2025

APVD LDJ 8.7.2025



STEPPERONLINE®

GEARBOX

TG90-G7

REV.	1	SCALE	1:2	DWG NO.	A4752
------	---	-------	-----	---------	-------