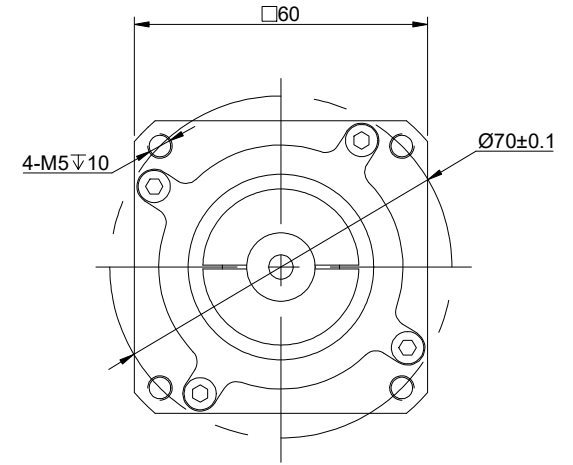
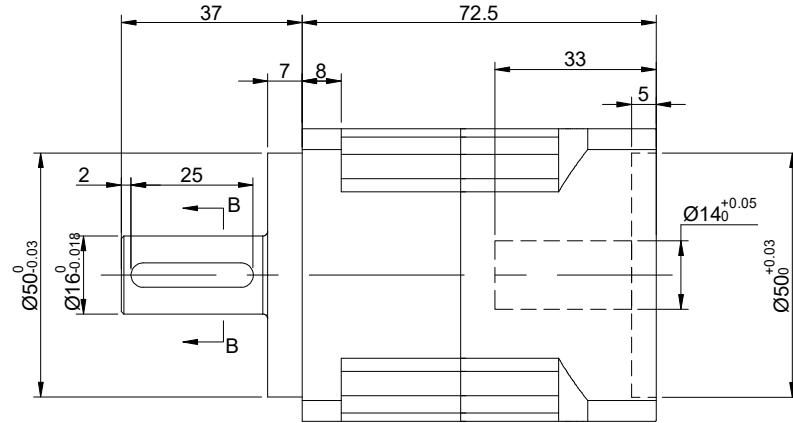
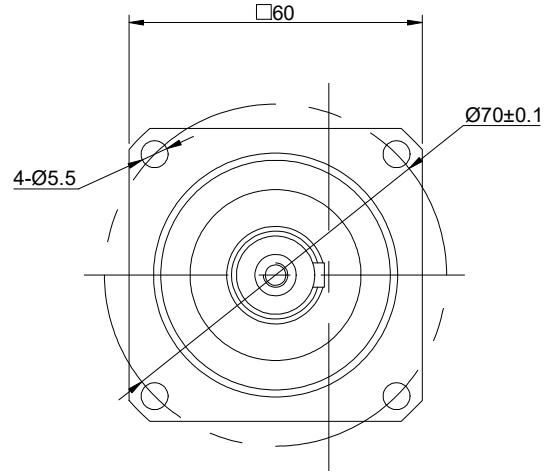
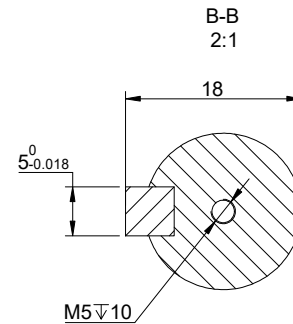


| REV. | REVISION RECORD | BY | DATE |
|------|-----------------|-----|-----------|
| 0 | ORIGIN | LDJ | 6.26.2025 |



| SPECIFICATION | CONNECTION | VALUE |
|--|------------|-------------------------|
| GEAR RATIO | | 3 |
| EFFICIENCY | | 97% |
| BACKLASH@NO-LOAD(arcmin) | | <=3 |
| MAX.PERMISSIBLE TORQUE(Nm)[lb-in] | | 35.00[309.78] |
| MOMENT PERMISSIBLE TORQUE(Nm)[lb-in] | | 70.00[619.55] |
| SHAFT MAXIMUM AXIAL LOAD(N) | | 630 |
| SHAFT MAXIMUM RADIAL LOAD(N) | | 1530 |
| GEARBOX MATCHING MOTOR'S INPUT SHAFT LENGTH (mm) | | MAX 33 |
| RATED INPUT SPEED(RPM) | | 3000 |
| MAX. INPUT SPEED(RPM) | | 6000 |
| NOISE(dB) | | <=60 |
| WATERPROOF RATING | | IP65 |
| LIFE(h) | | 20000 |
| WORKING TEMPERATURE | | -20°C~150°C[-4°F~302°F] |



DIMENSIONS ARE IN MILLIMETERS.
TOLERANCES AS BELOW:
DECIMALS ANGLES
X ±0.5 ±2°
X.X ±0.25
X.XX ±0.13

| | |
|------------------------|-----------|
| THIRD ANGLE PROJECTION | |
| SIGNATURE | DATE |
| DRN LDJ | 6.26.2025 |
| APVD LJ | 6.26.2025 |

| | | | | | | | | | |
|----------------------------------|---|-------|-----|---------|-------|------|---|-------|-----|
| STEPPERONLINE® | | | | | | | | | |
| HELICAL PLANETARY GEARBOX | | | | | | | | | |
| HTG60-G3 | | | | | | | | | |
| REV. | 1 | SCALE | 2:3 | DWG NO. | A4693 | REV. | 1 | SCALE | 2:3 |