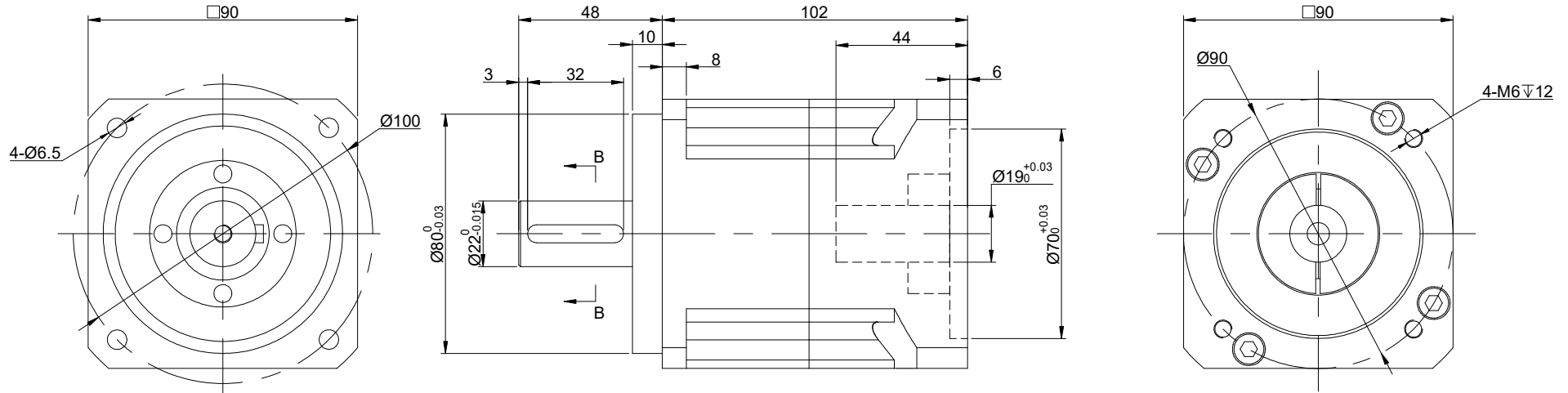
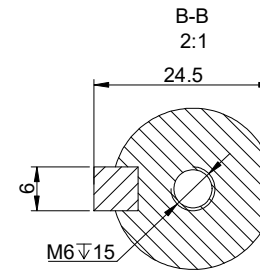


REV.	REVISION RECORD	BY	DATE
0	ORIGIN	LDJ	6.26.2025



SPECIFICATION	CONNECTION	VALUE
GEAR RATIO		3
EFFICIENCY		97%
BACKLASH@NO-LOAD(arcmin)		≤ 3
MAX.PERMISSIBLE TORQUE(Nm)[lb-in]		104.00[920.48]
MOMENT PERMISSIBLE TORQUE(Nm)[lb-in]		208.00[1840.96]
SHAFT MAXIMUM AXIAL LOAD(N)		1300
SHAFT MAXIMUM RADIAL LOAD(N)		3250
GEARBOX MATCHING MOTOR'S INPUT SHAFT LENGTH (mm)		MAX 44
RATED INPUT SPEED(RPM)		3000
MAX. INPUT SPEED(RPM)		6000
NOISE(dB)		60
WATERPROOF RATING		IP65
LIFE(h)		20000
WORKING TEMPERATURE		-20°C~150°C[-4°F~302°F]



DIMENSIONS ARE IN MILLIMETERS.
 TOLERANCES AS BELOW:
 DECIMALS ANGLES
 X ± 0.5 $\pm 2^\circ$
 X.X ± 0.25
 X.XX ± 0.13

THIRD ANGLE PROJECTION		
SIGNATURE		DATE
DRN	LDJ	6.26.2025
APVD	MYX	6.26.2025

STEPPERONLINE®

HELICAL PLANETARY GEARBOX

HTG90-G3

REV.	1	SCALE	1:1	DWG NO.	A4699
------	---	-------	-----	---------	-------