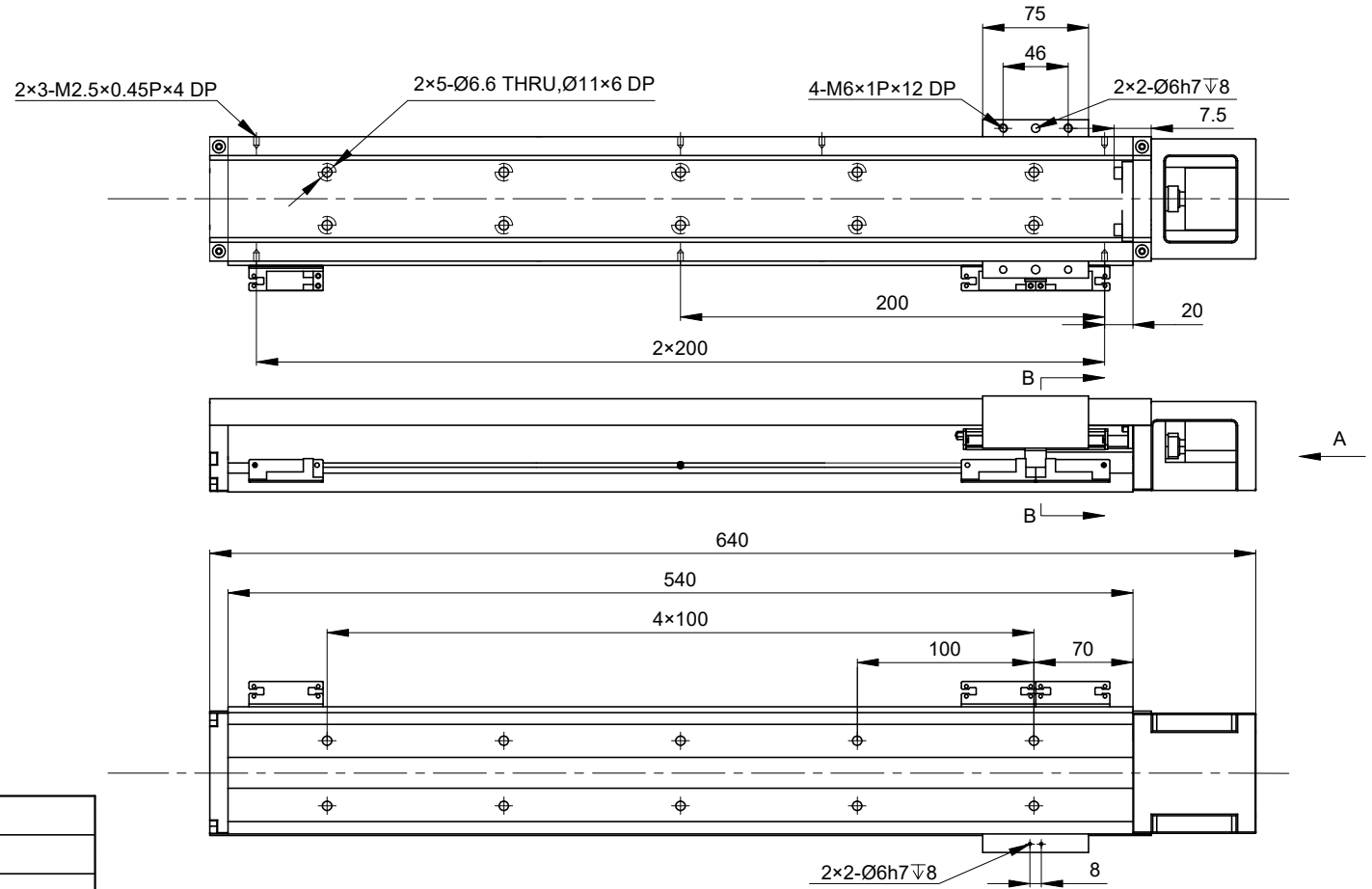
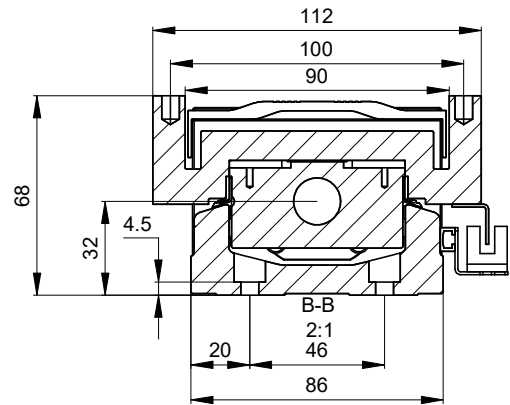
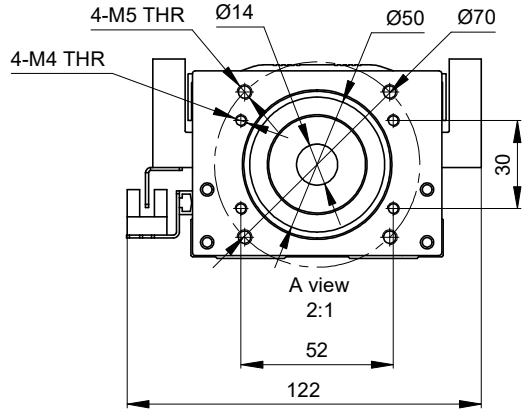


MODEL NO. LK86-60DL10S3-410 DWG NO. A4551

REV.	REVISION RECORD	BY	DATE
0	ORIGIN	LJ	5.21.2025

CUSTOMER'S MODEL: NO MODEL
END COVER COLOR: GREY



STROKE PITCH(mm)	410	
POSITION ACCURACY (mm)	±0.01	
BALL SCREW LEAD (mm)	10.00	
MAXIMUM SPEED (mm/s)	500.00	
MAXIMUM PAYLOAD(kg)	HORIZONTAL	40.00
	VERTICAL	12.00
RATED THRUST (N)	694.00	
BALL SCREW DIAMETER (mm)	C7/Ø15	
ORIGIN SENSOR	NPN	
INPUT SHAFT LENGTH (mm)	30.00	
INPUT SHAFT DIAMETER (mm)	14.00	
WEIGHT(Kg)[lb]	9[19.84]	

THIS DOCUMENT SHALL NOT BE REPRODUCED
NOR SHALL THE INFORMATION CONTAINED
HEREIN BE USED BY OR DISCLOSED TO OTHERS
UNLESS EXPRESSLY AUTHORIZED IN BY WRITING
STEPPERONLINE.

DIMENSIONS ARE IN MILLIMETERS. TOLERANCES AS BELOW: DECIMALS ANGLES	
X	±0.5 ±2°
X.X	±0.25
X.XX	±0.13
THIRD ANGLE PROJECTION	
SIGNATURE	DATE
DRN	LJ
APVD	LDJ

STEPPERONLINE®

STEPPER MOTOR LINEAR ACTUATOR

LK86-60DL10S3-410

REV.	0	SCALE	1:4	DWG NO.	A4551
------	---	-------	-----	---------	-------