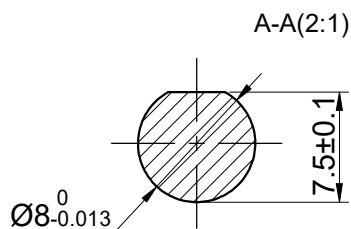
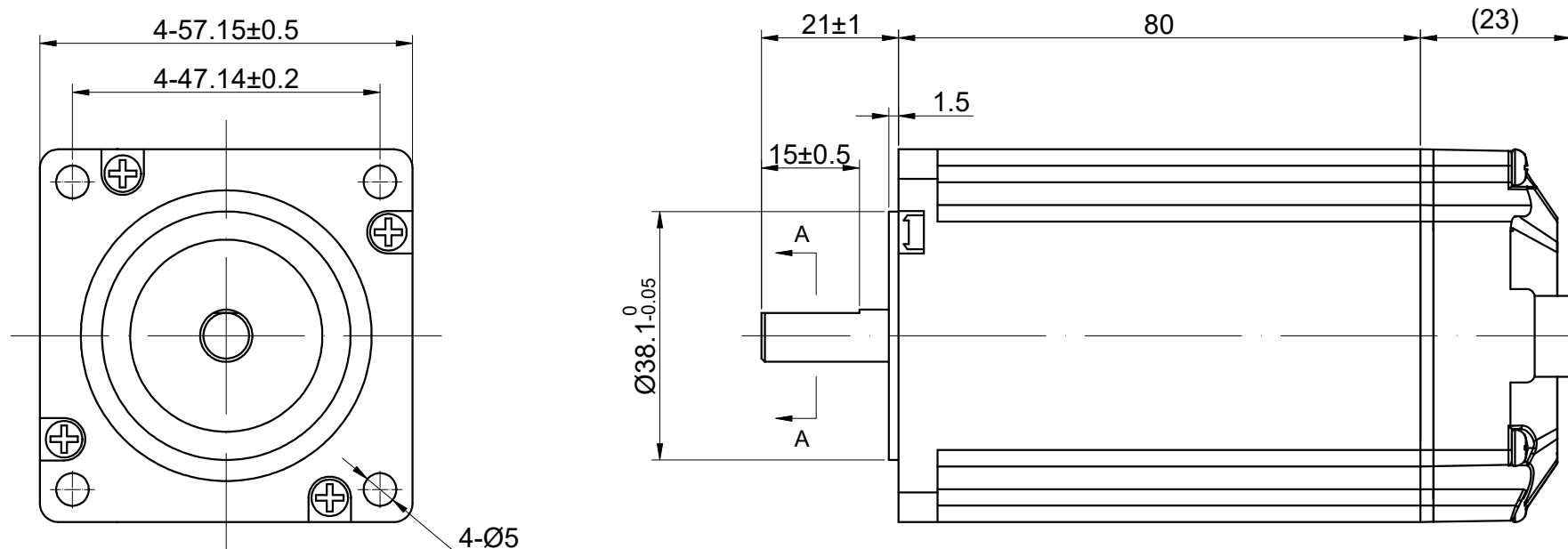


CUSTOMER'S MODEL: NO MODEL
 END COVER COLOR: BLACK

REV.	REVISION RECORD	BY	DATE
0	ORIGIN	ZPJ	5.26.2025



CONNECTION	BIPOLAR
SPECIFICATION	
POWER VOLTAGE(V)	24-48
PEAK CURRENT(A)	1.0-4.0
LOGICAL VOLTAGE(V)	24
LOGICAL CURRENT(mA)	10-50
HOLDING TORQUE(Nm)[lb-in]	2.20[19.47]
STEP ANGLE(°)	1.80
STEP ACCURACY(NON-ACCUM)	±5.00%
MAX. INPUT FREQUENCY	200KHZ
WEIGHT(Kg)[lb]	—
AMBIENT TEMPERATURE	0°C~50°C[32°F~112°F]
INSULATION CLASS	B 130°C[266°F]
TEMPERATURE RISE	MAX.80°C

FULL STEP 2 PHASE-Ex.,WHEN FACING MOUNTING END (X)					DIMENSIONS ARE IN MILLIMETERS.	
STEP	A+	B+	A-	B-	DECIMALS	ANGLES
1	+	+	-	-	X ±0.5	±2°
2	-	+	+	-	XX ±0.25	
3	-	-	+	+	XXX ±0.13	
4	+	-	-	+		

STEPPERONLINE®					
INTEGRATED STEPPER MOTOR					
ESS23-RS20					
SIGNATURE	DATE				
DRN	ZPJ				
APVD	LJ				
DATE	5.26.2025				
DATE	5.26.2025				
REV.	0	SCALE	1:1	DWG NO.	A4573

THIS DOCUMENT SHALL NOT BE REPRODUCED NOR SHALL THE INFORMATION CONTAINED HEREIN BE USED BY OR DISCLOSED TO OTHERS UNLESS EXPRESSLY AUTHORIZED IN BY WRITING STEPPERONLINE.

SIGNATURE	DATE
DRN	ZPJ
APVD	LJ
DATE	5.26.2025
DATE	5.26.2025