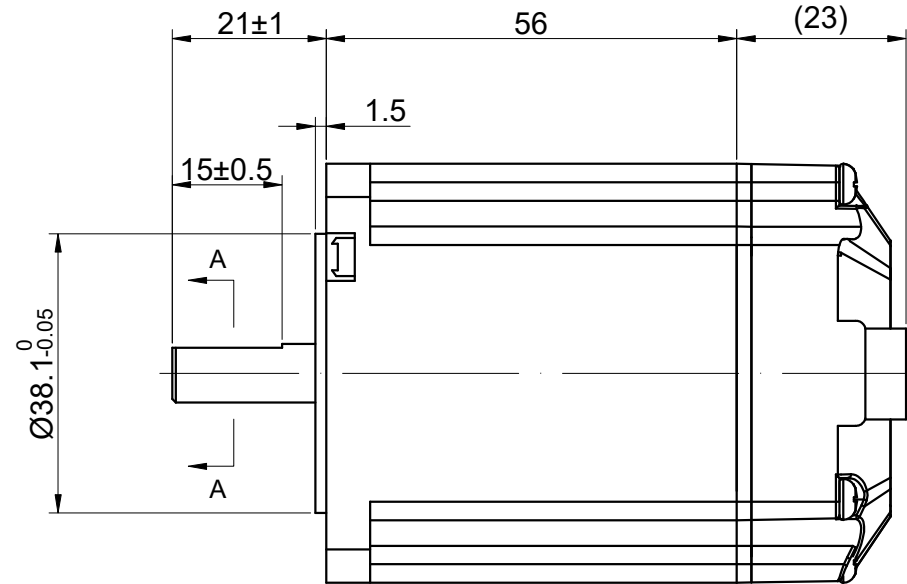
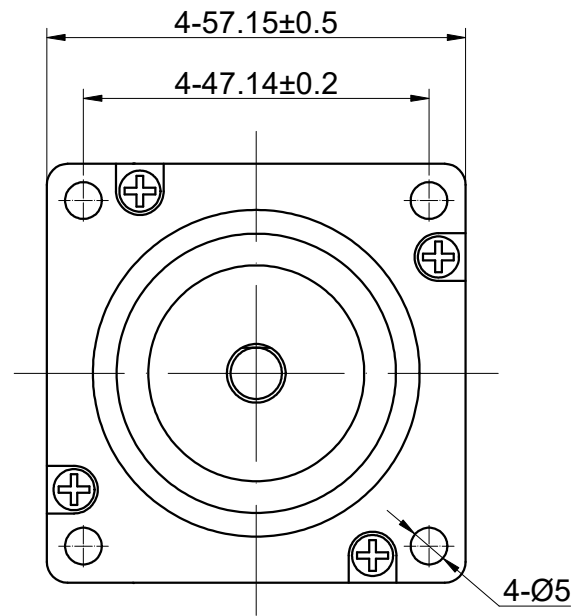
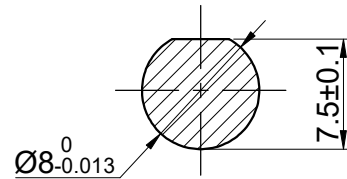


CUSTOMER'S MODEL: NO MODEL
 END COVER COLOR: BLACK

REV.	REVISION RECORD	BY	DATE
0	ORIGIN	ZPJ	5.26.2025



A-A(2:1)



CONNECTION	BIPOLAR
SPECIFICATION	
POWER VOLTAGE(V)	24-48
PEAK CURRENT(A)	1.0-4.0
LOGICAL VOLTAGE(V)	24
LOGICAL CURRENT(mA)	10-50
HOLDING TORQUE(Nm)[lb-in]	1.20[10.62]
STEP ANGLE(°)	1.80
STEP ACCURACY(NON-ACCUM)	±5.00%
MAX. INPUT FREQUENCY	200KHZ
WEIGHT(Kg)[lb]	—
AMBIENT TEMPERATURE	0°C~50°C[32°F~112°F]
INSULATION CLASS	B 130°C[266°F]
TEMPERATURE RISE	MAX.80°C

FULL STEP 2 PHASE-Ex.,WHEN FACING MOUNTING END (X)					DIMENSIONS ARE IN MILLIMETERS.	
STEP	A+	B+	A-	B-	CCW	TOLERANCES AS BELOW:
1	+	+	-	-	↓ ↑ CW CCW	DECIMALS ±0.5
2	-	+	+	-		ANGLES ±2°
3	-	-	+	+		X ±0.25
4	+	-	-	+		X.XX ±0.13
					THIRD ANGLE PROJECTION	

STEPPERONLINE®

INTEGRATED STEPPER MOTOR

ESS23-RS10

THIS DOCUMENT SHALL NOT BE REPRODUCED NOR SHALL THE INFORMATION CONTAINED HEREIN BE USED BY OR DISCLOSED TO OTHERS UNLESS EXPRESSLY AUTHORIZED IN BY WRITING STEPPERONLINE.

SIGNATURE		DATE
DRN	ZPJ	5.26.2025
APVD	LJ	5.26.2025

REV.	0	SCALE	1:1	DWG NO.	A4572
------	---	-------	-----	---------	-------