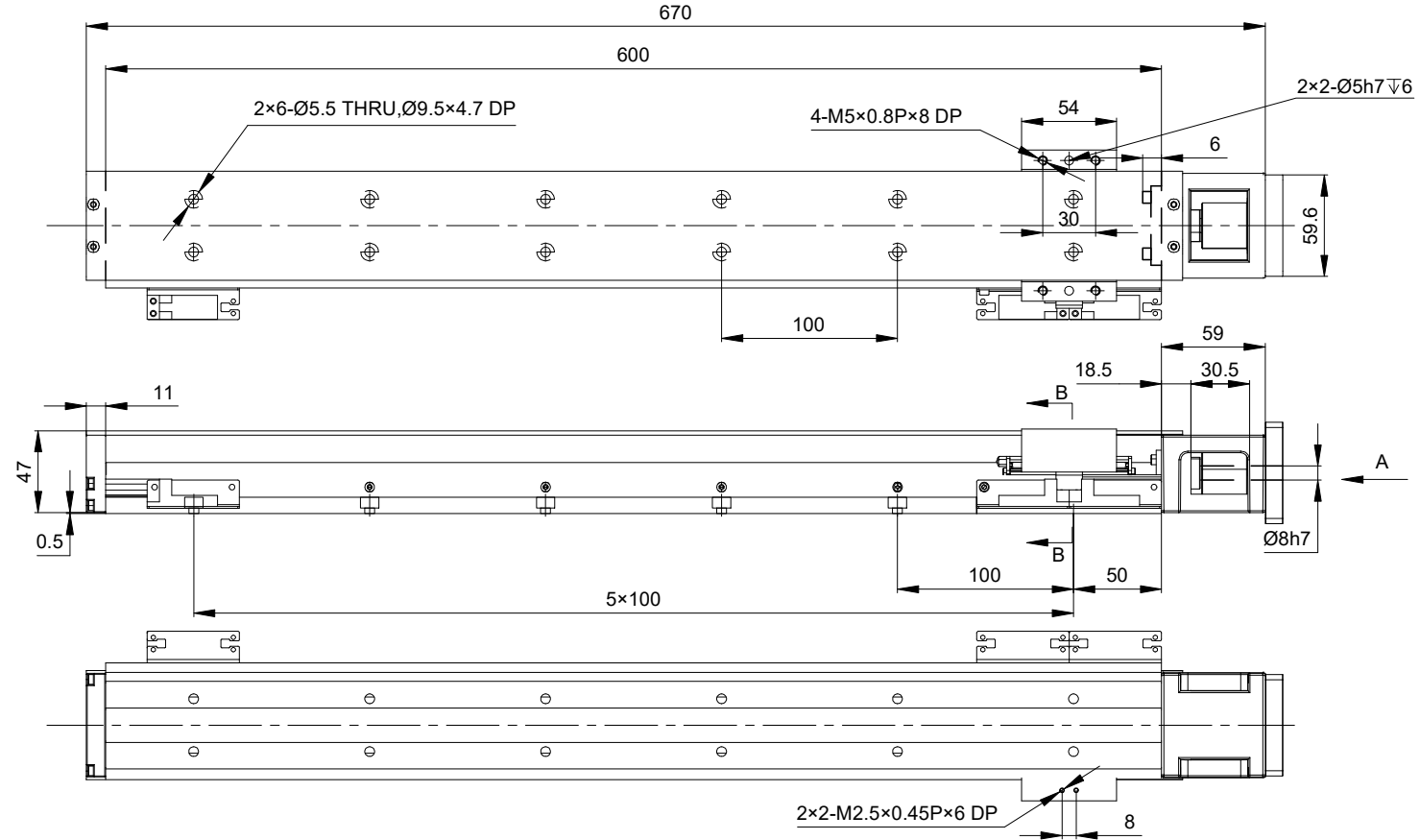
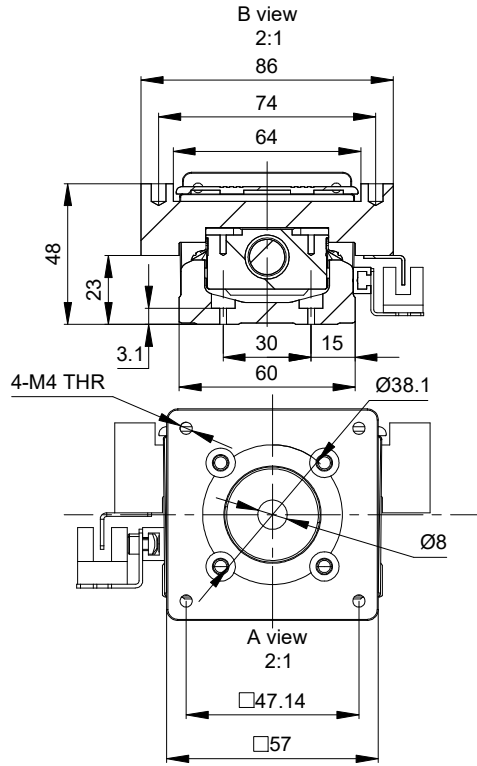


REV.	REVISION RECORD	BY	DATE
0	ORIGIN	LDJ	12.23.2024

CUSTOMER'S MODEL: NO MODEL  
 END COVER COLOR: GREY



POSITION ACCURACY (mm)		±0.01
BALL SCREW LEAD (mm)		10.00
MAXIMUM SPEED (mm/s)		166.00
MAXIMUM PAYLOAD(kg)	HORIZONTAL	20.00
	VERTICAL	6.00
RATED THRUST (N)		170.00
BALL SCREW DIAMETER (mm)		C7/Ø12
ORIGIN SENSOR		NPN
INPUT SHAFT LENGTH (mm)		21.00
INPUT SHAFT DIAMETER (mm)		8.00
WEIGHT(Kg)[lb]		4.6[10.14]

THIS DOCUMENT SHALL NOT BE REPRODUCED  
 NOR SHALL THE INFORMATION CONTAINED  
 HEREIN BE USED BY OR DISCLOSED TO OTHERS  
 UNLESS EXPRESSLY AUTHORIZED IN BY WRITING  
 STEPPERONLINE.

DIMENSIONS ARE IN MILLIMETERS.  
 TOLERANCES AS BELOW:  
 DECIMALS ANGLES  
 X ±0.5 ±2°  
 X.X ±0.25  
 X.XX ±0.13

THIRD ANGLE PROJECTION		DATE
SIGNATURE		
DRN	LDJ	9.16.2025
APVD	MYX	9.16.2025

**STEPPERONLINE®**

**STEPPER MOTOR LINEAR ACTUATOR**

**LK60-23DL103-510**

REV.	0	SCALE	1:4	DWG NO.	A3960
------	---	-------	-----	---------	-------