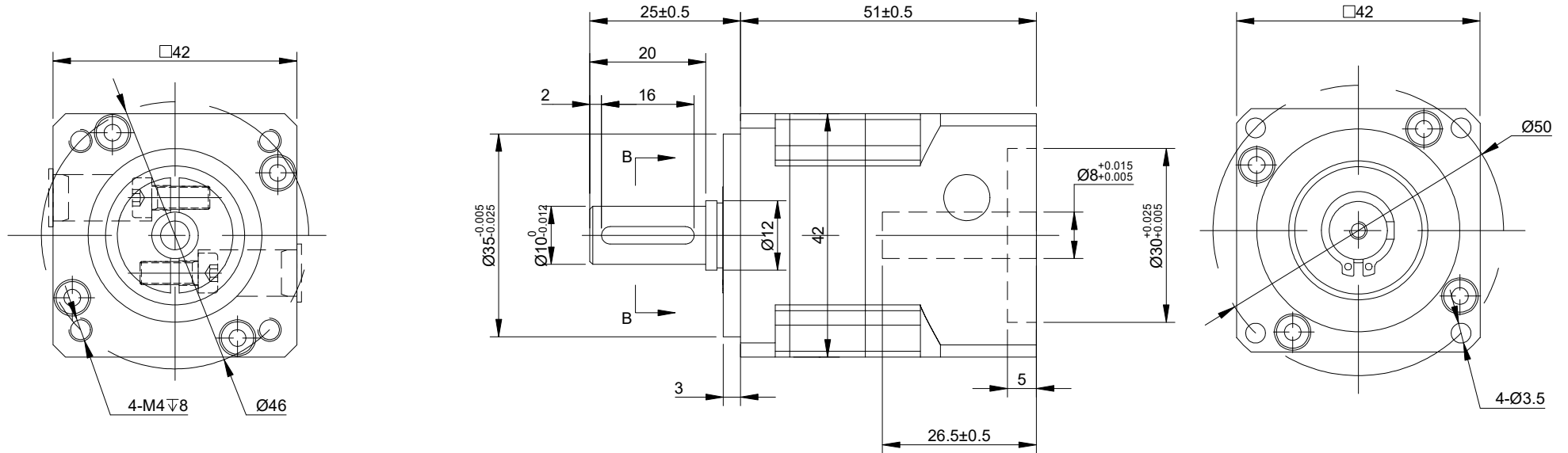
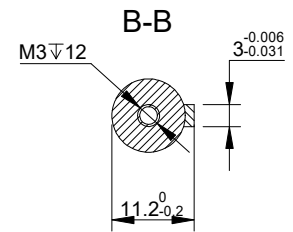


REV.	REVISION RECORD	BY	DATE
0	ORIGIN	LDJ	3.31.2025



SPECIFICATION	CONNECTION	VALUE
GEAR RATIO		10
EFFICIENCY		96%
BACKLASH@NO-LOAD(arcmin)		<=15
MAX.PERMISSIBLE TORQUE(Nm)[lb-in]		5.00[44.25]
MOMENT PERMISSIBLE TORQUE(Nm)[lb-in]		10.00[88.50]
SHAFT MAXIMUM AXIAL LOAD(N)		100
SHAFT MAXIMUM RADIAL LOAD(N)		300
GEARBOX MATCHING MOTOR'S INPUT SHAFT LENGTH (mm)		MAX26.5
RATED INPUT SPEED(RPM)		3000
MAX. INPUT SPEED(RPM)		6000
NOISE(dB)		<=55
WATERPROOF RATING		IP54
LIFE(h)		20000
WORKING TEMPERATURE		-20°C~150°C[-4°F~302°F]



DIMENSIONS ARE IN MILLIMETERS.
 TOLERANCES AS BELOW:
 DECIMALS ANGLES
 X ±0.5 ±2°
 X.X ±0.25
 X.XX ±0.13

THIRD ANGLE PROJECTION

SIGNATURE DATE

DRN LDJ 3.31.2025

APVD MYX 3.31.2025

STEPPERONLINE®

GEARBOX

TG40-G10

REV.	1	SCALE	2:3	DWG NO.	A4353
------	---	-------	-----	---------	-------