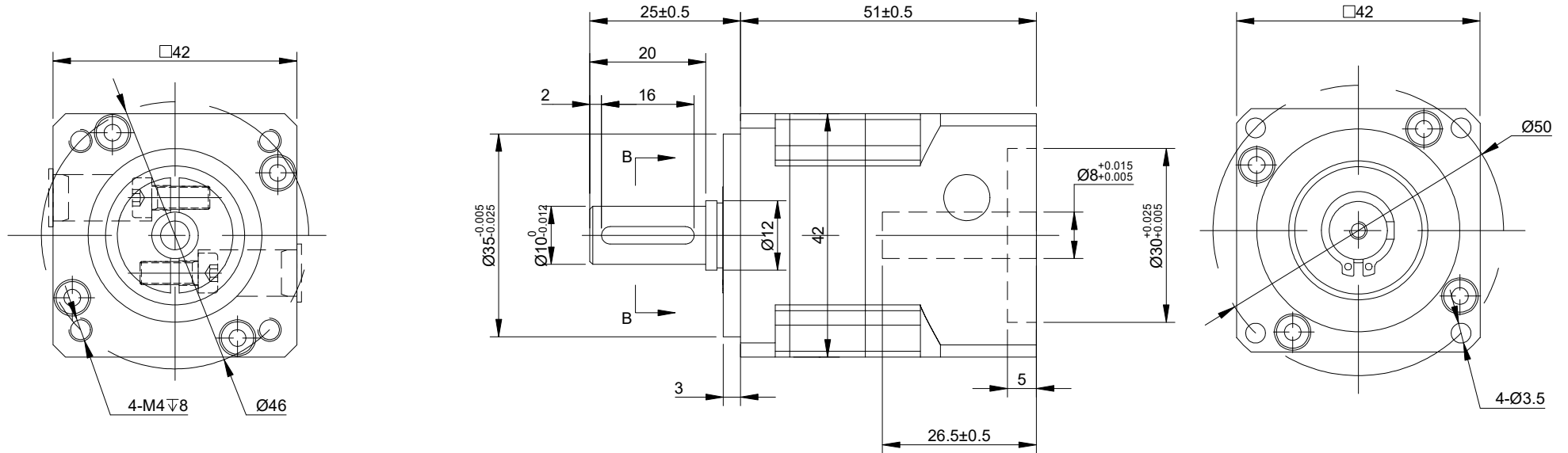
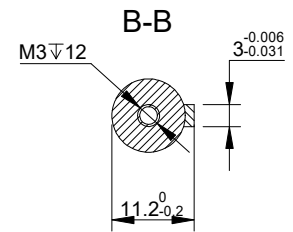


REV.	REVISION RECORD	BY	DATE
0	ORIGIN	LDJ	3.31.2025



SPECIFICATION	CONNECTION	VALUE
GEAR RATIO		5
EFFICIENCY		96%
BACKLASH@NO-LOAD(arcmin)		<=15
MAX.PERMISSIBLE TORQUE(Nm)[lb-in]		9.00[79.66]
MOMENT PERMISSIBLE TORQUE(Nm)[lb-in]		18.00[159.31]
SHAFT MAXIMUM AXIAL LOAD(N)		100
SHAFT MAXIMUM RADIAL LOAD(N)		300
GEARBOX MATCHING MOTOR'S INPUT SHAFT LENGTH (mm)		MAX26.5
RATED INPUT SPEED(RPM)		3000
MAX. INPUT SPEED(RPM)		6000
NOISE(dB)		<=55
WATERPROOF RATING		IP54
LIFE(h)		20000
WORKING TEMPERATURE		-20°C~150°C[-4°F~302°F]



DIMENSIONS ARE IN MILLIMETERS.  
 TOLERANCES AS BELOW:  
 DECIMALS ANGLES  
 X ±0.5 ±2°  
 X.X ±0.25  
 X.XX ±0.13

THIRD ANGLE PROJECTION

SIGNATURE DATE

DRN LDJ 3.31.2025

APVD MYX 3.31.2025

**STEPPERONLINE®**

**GEARBOX**

**TG40-G5**

REV.	1	SCALE	2:3	DWG NO.	A4352
------	---	-------	-----	---------	-------