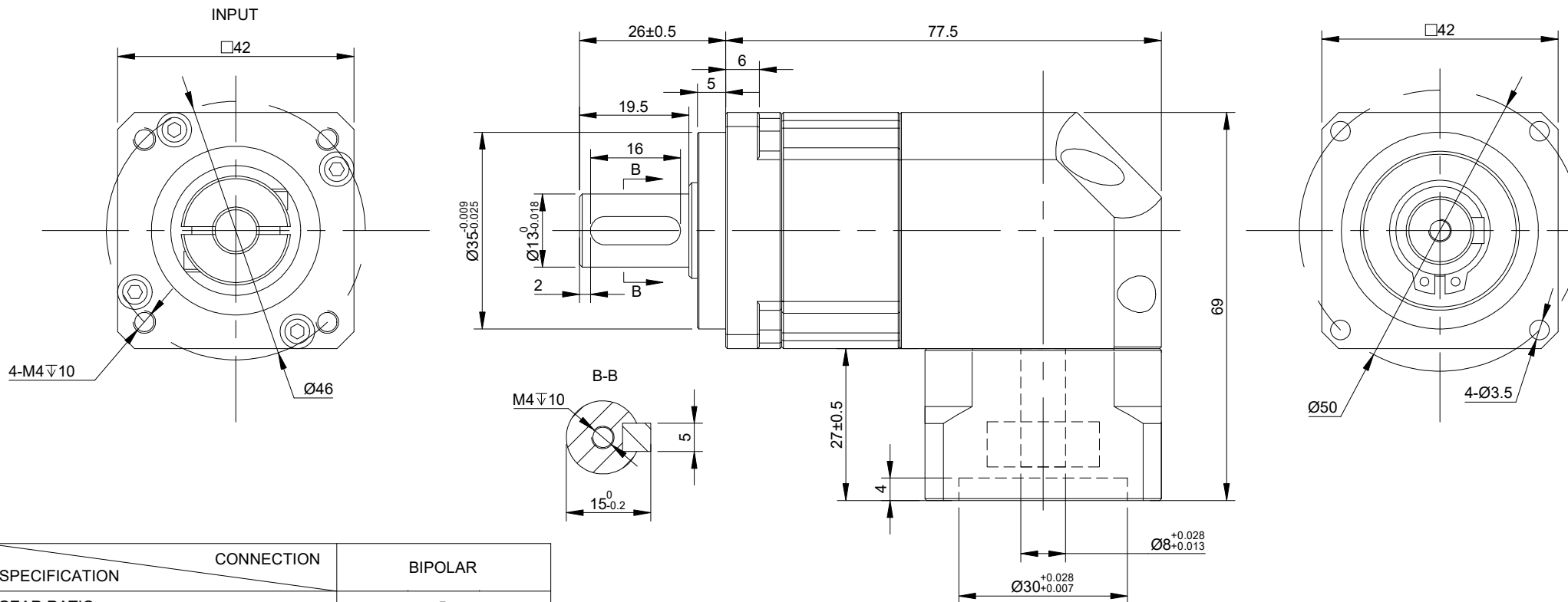


REV.	REVISION RECORD	BY	DATE
0	ORIGIN	LDJ	3.25.2025



SPECIFICATION	CONNECTION	BIPOLAR
GEAR RATIO		5
EFFICIENCY		95.00%
BACKLASH@NO-LOAD(arcmin)		≤ 15
MAX.PERMISSIBLE TORQUE(Nm)[lb-in]		16.00[141.61]
MOMENT PERMISSIBLE TORQUE(Nm)[lb-in]		32.00[283.22]
SHAFT MAXIMUM AXIAL LOAD(N)		140
SHAFT MAXIMUM RADIAL LOAD(N)		170
INPUT SHAFT LENGTH (mm)		MAX27.5
RATED INPUT SPEED(RPM)		3000
MAX. INPUT SPEED(RPM)		6000
NOISE(dB)		≤ 60
WATERPROOF RATING		IP65
LIFE(h)		20000
WORKING TEMPERATURE		-10°C~+90°C[14°F~194°F]

THIS DOCUMENT SHALL NOT BE REPRODUCED NOR SHALL THE INFORMATION CONTAINED HEREIN BE USED BY OR DISCLOSED TO OTHERS UNLESS EXPRESSLY AUTHORIZED IN BY WRITING STEPPERONLINE.

DIMENSIONS ARE IN MILLIMETERS.
TOLERANCES AS BELOW:
DECIMALS ANGLES
X ± 0.5
X.X ± 0.25
X.XX ± 0.13
 $\pm 2^\circ$

THIRD ANGLE PROJECTION		
SIGNATURE		DATE
DRN	LDJ	3.25.2025
APVD	LJ	3.25.2025

STEPPERONLINE[®]

PLANETARY GEARBOX

RTG40-G5

REV.	1	SCALE	1:1	DWG NO.	A4339
------	---	-------	-----	---------	-------