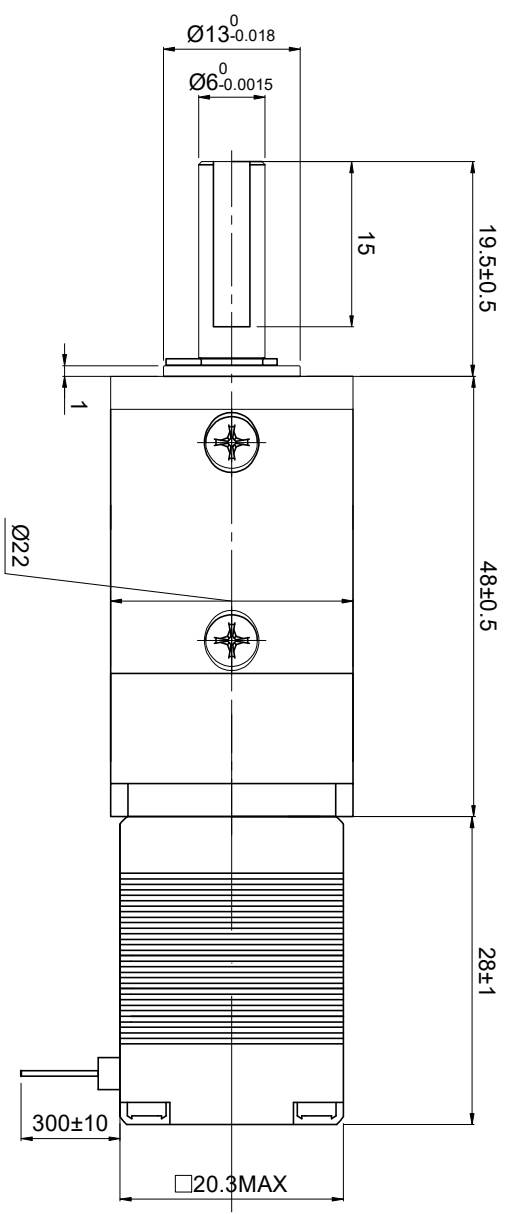
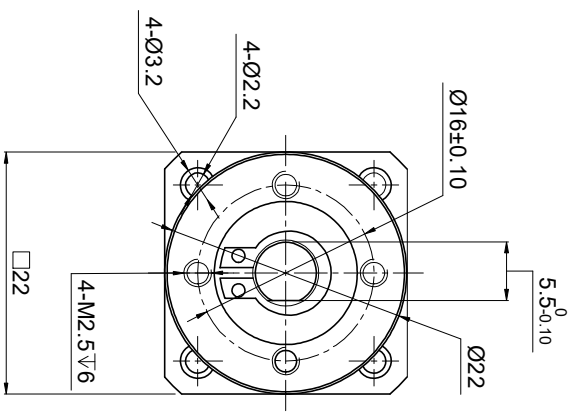


29274V ON GMD 02SSG3-S4020-11SH8 ON TEGOM

CUSTOMER'S MODEL: NO MODEL
END COVER COLOR: BLACK

REV.	REVISION RECORD	BY	DATE
0	ORIGIN	LJ	3.14.2025



SPECIFICATION	CONNECTION	BIPOLAR
AMPS/PHASE		0.20
RESISTANCE/PHASE(Ohms)@25°C		24.00±10%
INDUCTANCE/PHASE(mH)@1KHz		8.00±20%
HOLDING TORQUE w/o GEARBOX(Nm)[lb-in]		0.02[0.14]
STEP ANGLE w/o GEARBOX(°)		1.80
GEAR RATIO		20
GEAR EFFICIENCY		94%
BACKLASH@NO-LOAD(arcmin)		<=20
MAX.PERMISSIBLE TORQUE(Nm)		4.00
MOMENT PERMISSIBLE TORQUE(Nm)		8.00
AMBIENT TEMPERATURE		-10°C-50°C[14°F-122°F]
INSULATION CLASS		B 130°C[266°F]
TEMPERATURE RISE		MAX.80°C

COMMENT:
1. TMBF 6000h OR MORE @ 24V/300RPM
2. INSULATION RESISTANCE (NORMAL TEMPERATURE AND HUMIDITY): 100 Mohm
3. DIELECTRIC STRENGTH 500VAC FOR 1MIN.(BETWEEN THE MOTOR COILS AND THE MOTOR CASE)

FULL STEP 2 PHASE-EX. WHEN FACING MOUNTING END (X)

STEP	A+	B+	A-	B-
1	+	+	-	-
2	-	+	+	-
3	-	-	+	+
4	+	-	-	+

CCW CW

THIS DOCUMENT SHALL NOT BE REPRODUCED NOR SHALL THE INFORMATION CONTAINED HEREIN BE USED BY OR DISCLOSED TO OTHERS UNLESS EXPRESSLY AUTHORIZED IN WRITING BY STEPPERONLINE.

DIMENSIONS ARE IN MILLIMETERS. TOLERANCES AS BELOW:
DECIMALS ±0.5
X.X ±0.25
X.XX ±0.13

SIGNATURE	DATE
DRN LJ	3.14.2025
APVD MYX	3.14.2025

PIN NO	BIPOLAR	LEADS	WINDING
1	A+	BLK	A+
2	A-	GRN	A-
3	B+	RED	B+
4	B-	BLU	B-

STEPPERONLINE®

STEPPER MOTOR

8HS11-0204S-EGSS20

REV.	1	SCALE	3:2	DWG. NO.	A4262
------	---	-------	-----	----------	-------