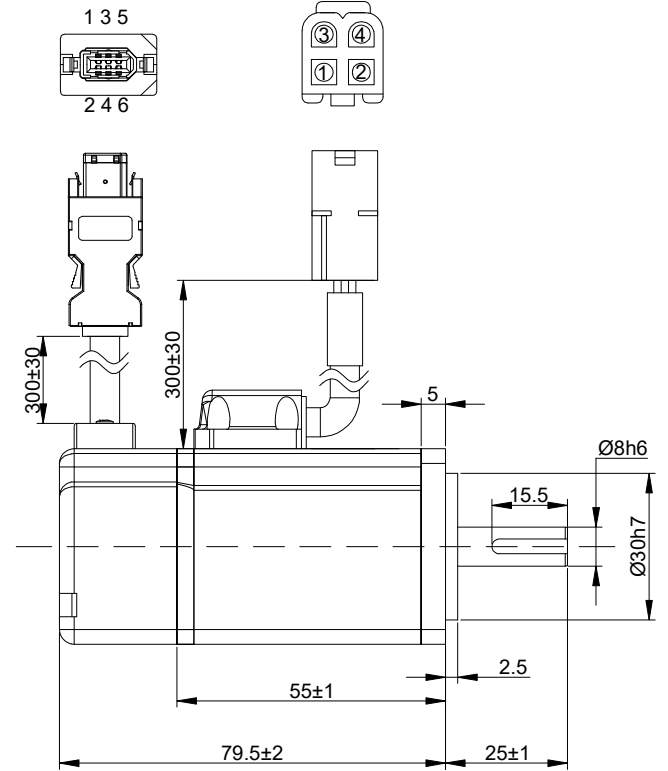
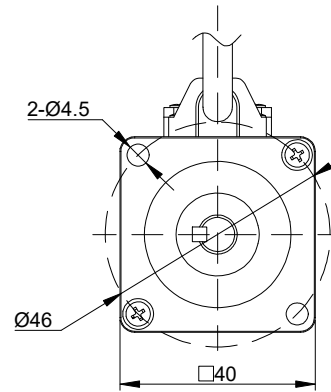
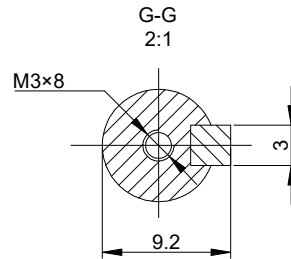
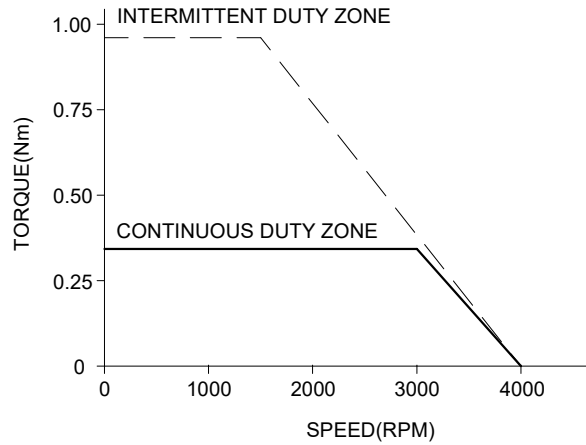


SPEED - TORQUE CURVE



SPECIFICATION	VALUE
RATED POWER(W)	100
RATED VOLTAGE(VDC)	48
RATED TORQUE(Nm)	0.318
PEAK TORQUE(Nm)	0.954
RATED SPEED(RPM)	3000
RATED CURRENT(Amp)	3.10
BACK EMF CONST(V/KRPM)	-
TORQUE CONST(Nm/Amp)	0.10
LINE-LINE RESISTANCE(Ω)	2.10±10%
LINE-LINE INDUCTANCE(mH)	1.60±20%
INERTIA(Kg <sup>2</sup> *m)	0.046×10 <sup>-4</sup>
INSULATION CLASS	F
IP RATING	IP65
POLES	10
ELECTRICAL TIME CONSTANT(ms)	0.95
ENCODER RESOLUTION	17 bit
WEIGHT(KG)	0.45

COMMENT:  
 1.DYNAMIC AXIAL LOAD: 54N MAX  
 2.DYNAMIC RADIAL LOAD : 78N MAX

SEQUENCE OF MOTOR CABLES						
PIN-NO.	1	2	3	4	--	--
DESCRIPTION	U	V	W	PE	--	--
COLOUR	RED	YEL	BLU	YEL/GRN	--	--

ENCODER CABLE SEQUENCE								
PIN-NO.	1	2	3	4	5	6	7	8
DESCRIPTION	+5V	GND	-	-	485+	485-	-	-
COLOUR	RED	BLK	-	-	BLU	YEL	-	-



	APVD	MYX	11.27.2024
	CHKD		
1:1.5	DRN	LDJ	11.7.2024
SCALE	SIGNATURE		DATE

DC SERVO MOTOR  
 DSY40-100L2A2M17S