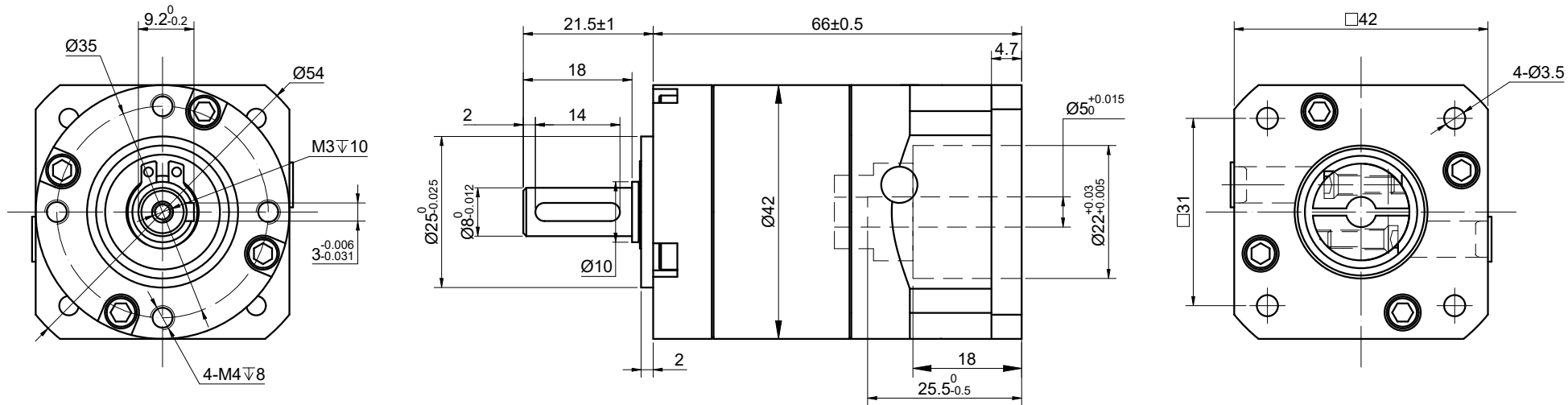


| REV. | REVISION RECORD | BY  | DATE      |
|------|-----------------|-----|-----------|
| 0    | ORIGIN          | MYX | 2.27.2025 |



| SPECIFICATION                                    | CONNECTION | VALUE                   |
|--|------------|-------------------------|
| GEAR RATIO                                       |            | 20                      |
| EFFICIENCY                                       |            | 80%                     |
| BACKLASH@NO-LOAD(arcmin)                         |            | <=45                    |
| MAX.PERMISSIBLE TORQUE(Nm)[lb-in]                |            | 10.00[88.51]            |
| MOMENT PERMISSIBLE TORQUE(Nm)[lb-in]             |            | 20.00[177.01]           |
| SHAFT MAXIMUM AXIAL LOAD(N)                      |            | 100                     |
| SHAFT MAXIMUM RADIAL LOAD(N)                     |            | 300                     |
| GEARBOX MATCHING MOTOR'S INPUT SHAFT LENGTH (mm) |            | 21.5-25                 |
| RATED INPUT SPEED(RPM)                           |            | 1000                    |
| MAX. INPUT SPEED(RPM)                            |            | 2000                    |
| NOISE(dB)  |            | <=55                    |
| WATERPROOF RATING                                |            | IP54                    |
| WORKING TEMPERATURE                              |            | -20°C~150°C[-4°F~302°F] |

DIMENSIONS ARE IN MILLIMETERS.  
TOLERANCES AS BELOW:  
DECIMALS      ANGLES  
X                ±0.5            ±2°  
X.X             ±0.25  
X.XX           ±0.13

THIRD ANGLE PROJECTION

SIGNATURE      DATE

DRN      MYX      2.27.2025

APVD      ZPJ      2.27.2025

**STEPPERONLINE®**

**GEARBOX**

**MGL17-G20**

|      |   |       |     |         |       |
|------|---|-------|-----|---------|-------|
| REV. | 0 | SCALE | 1:1 | DWG NO. | A4208 |
|------|---|-------|-----|---------|-------|