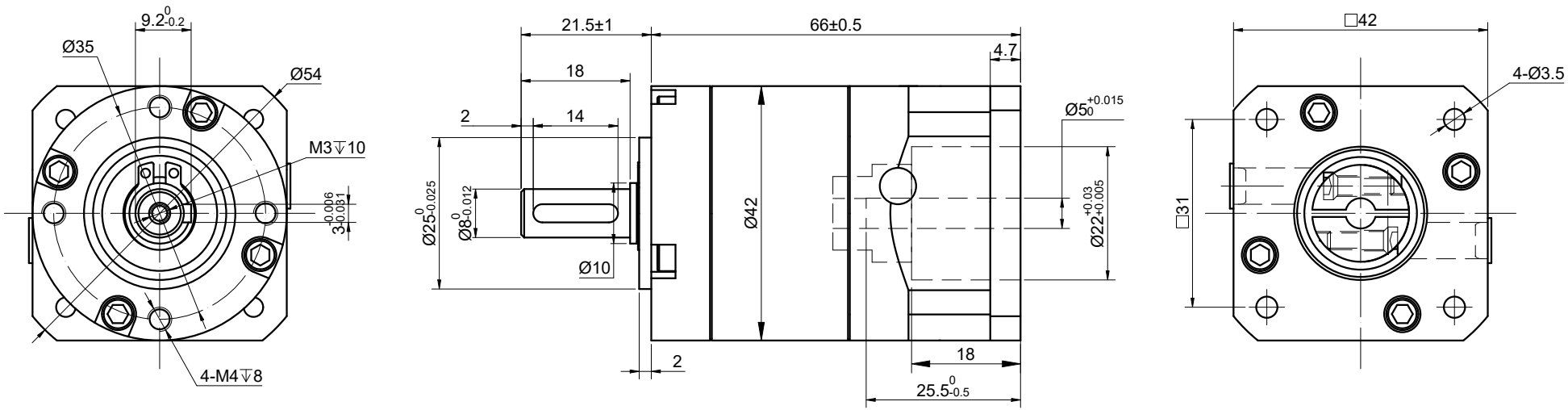


REV.	REVISION RECORD	BY	DATE
0	ORIGIN	MYX	2.27.2025



SPECIFICATION	CONNECTION	VALUE
GEAR RATIO		100
EFFICIENCY		80%
BACKLASH@NO-LOAD(arcmin)		≤ 45
MAX.PERMISSIBLE TORQUE(Nm)[lb-in]		10.00[88.51]
MOMENT PERMISSIBLE TORQUE(Nm)[lb-in]		20.00[177.01]
SHAFT MAXIMUM AXIAL LOAD(N)		100
SHAFT MAXIMUM RADIAL LOAD(N)		300
GEARBOX MATCHING MOTOR'S INPUT SHAFT LENGTH (mm)		21.5-25
RATED INPUT SPEED(RPM)		1000
MAX. INPUT SPEED(RPM)		2000
NOISE(dB)		≤ 55
WATERPROOF RATING		IP54
WORKING TEMPERATURE		$-20^{\circ}\text{C} \sim 150^{\circ}\text{C} [-4^{\circ}\text{F} \sim 302^{\circ}\text{F}]$

DIMENSIONS ARE IN MILLIMETERS.
TOLERANCES AS BELOW:
DECIMALS ANGLES
X ± 0.5 $\pm 2^{\circ}$
X.X ± 0.25
X.XX ± 0.13

THIRD ANGLE PROJECTION		
SIGNATURE		DATE
DRN	MYX	2.27.2025
APVD	ZPJ	2.27.2025

STEPPERONLINE®

GEARBOX

MGL17-G100

REV.	0	SCALE	1:1	DWG NO.	A4210
------	---	-------	-----	---------	-------