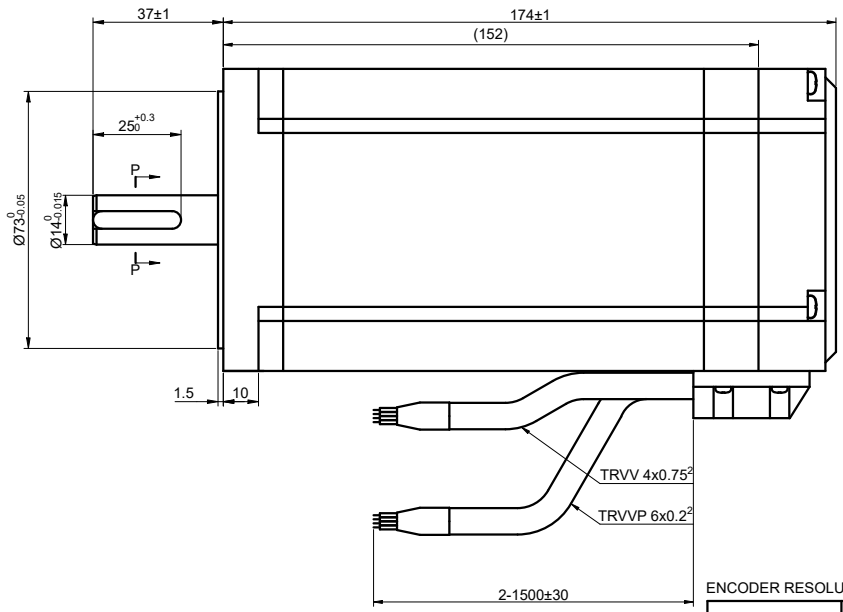
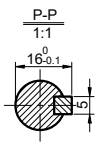
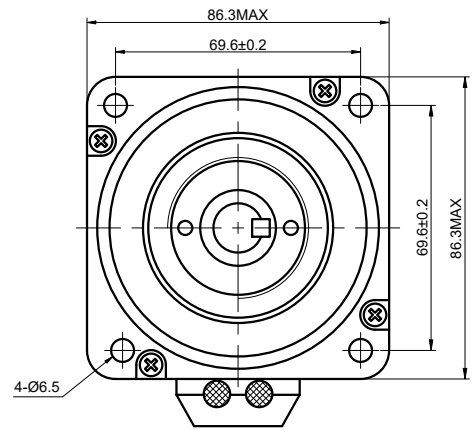


MODEL NO. 34HS59-6004D-E1K-1M5 DWG NO. A4050

CUSTOMER'S MODEL: NO MODEL
END COVER COLOR: BLACK

REV.	REVISION RECORD	BY	DATE
0	ORIGIN	YSX	1.3.2025



ENCODER RESOLUTION:1000PPR(4000CPR)

DESCRIPTION	EA+	VCC	GND	EB+	EB-	EA-
COLOUR	BLK	RED	WHT	YEL	GRN	BLU

CONNECTION	BIPOLAR
SPECIFICATION	BIPOLAR
AMPS/PHASE	6.00
RESISTANCE/PHASE(Ohms)@25°C	0.59±10%
INDUCTANCE/PHASE(mH)@1KHz	4.80±20%
HOLDING TORQUE(Nm)[lb-in]	12.00[106.29]
STEP ANGLE(°)	1.80±5.00%
STEP ACCURACY(NON-ACCUM)	±5.00%
ROTOR INERTIA(g-cm²)	3600
WEIGHT(Kg)[lb]	5.7[12.57]
AMBIENT TEMPERATURE	-10°C~50°C[14°F~122°F]
INSULATION CLASS	B 130°C[266°F]
TEMPERATURE RISE	MAX.80°C

COMMENT:
 1.DYNAMIC AXIAL LOAD: 15N MAX
 2.DYNAMIC RADIAL LOAD @ SHAFT LENGTH 20mm: 75N MAX
 3.TMBF 6000h OR MORE @ 24V/300RPM
 4.INSULATION RESISTANCE (NORMAL TEMPERATURE AND HUMIDITY): 100 Mohm
 5.DIELECTRIC STRENGTH 500VAC FOR 1MIN.(BETWEEN THE MOTOR COILS AND THE MOTOR CASE)

FULL STEP 2 PHASE-Ex. WHEN FACING MOUNTING END (X)					CCW	CW
STEP	A+	B+	A-	B-		
1	+	+	-	-	↓	↑
2	-	+	+	-		
3	-	-	+	+		
4	+	-	-	+		

DIMENSIONS ARE IN MILLIMETERS.
 TOLERANCES AS BELOW:
 DECIMALS ANGLES
 X ±0.5 ±2°
 X.X ±0.25
 X.XX ±0.13
 THIRD ANGLE PROJECTION

MOTOR CONNECTION		
COLOUR	BIPOLAR	WINDING
BLK	A+	
GRN	A-	
RED	B+	
BLU	B-	

STEPPERONLINE®

STEPPER MOTOR

34HS59-6004D-E1K-1M5

THIS DOCUMENT SHALL NOT BE REPRODUCED NOR SHALL THE INFORMATION CONTAINED HEREIN BE USED BY OR DISCLOSED TO OTHERS UNLESS EXPRESSLY AUTHORIZED IN BY WRITING STEPPERONLINE.

SIGNATURE		DATE
DRN	YSX	1.3.2025
APVD	MYX	1.3.2025

REV.	0	SCALE	2:3	DWG NO.	A4050
------	---	-------	-----	---------	-------