

# STEPPERONLINE®

## User Manual

## LK60 Series Linear Actuators



©2025 All Rights Reserved

Address: 15-4, #799 Hushan Road, Jiangning, Nanjing, China

Tel: 0086-2587156578

Web: [www.omc-stepperonline.com](http://www.omc-stepperonline.com)

Sales: [sales@stepperonline.com](mailto:sales@stepperonline.com)

Support: [technical@stepperonline.com](mailto:technical@stepperonline.com)

# LK60 Series

## Model Explanation

LK60 - 23 D L10 (S) 3 - 510

Stroke Length:510mm

No. of Sensors

Motor installation standard (no letter means stepper motor)

S: Standard servo

P: Panasonic servo

Lead:10mm

Motor Mounting Position:

D:Direct Connect

B:Under Fold

L:Left Fold

R:Right Fold

Motor Mounting Flange:

23:Nema 23 Stepper

40:40mm Servo

Series

## Specifications

Nema 23 Stepper drive:

Position accuracy (mm)		0.01			
Ball screw lead (mm)		5	10	-	-
Maximum speed (mm/s)		83	166	-	-
Maximum payload (kg)	Horizontal	30	20	-	-
	Vertical	10	6	-	-
Rated thrust (N)		341	170	-	-

Note: We recommend setting the motor acceleration and deceleration time to 0.4 seconds.

(100W) 40mm Servo drive:

Position accuracy (mm)		0.01			
Ball screw lead (mm)		5	10	-	-
Maximum speed (mm/s)		250	500	-	-
Maximum payload (kg)	Horizontal	30	20	-	-
	Vertical	10	6	-	-
Rated thrust (N)		341	170	-	-

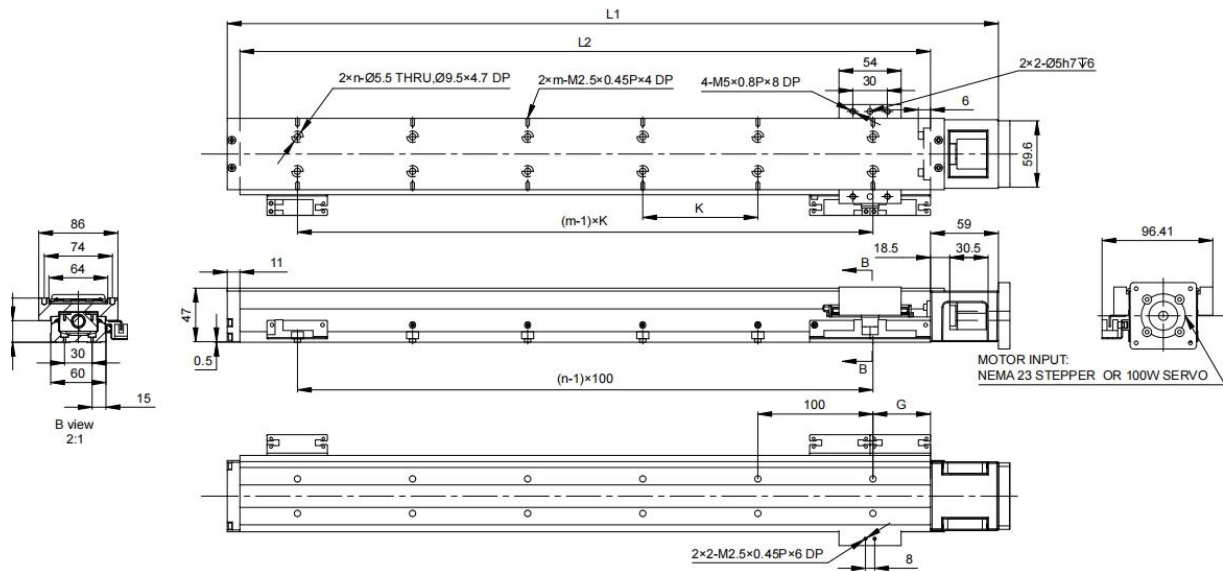
### Note:

1. We recommend setting the motor acceleration and deceleration time to 0.2 seconds.



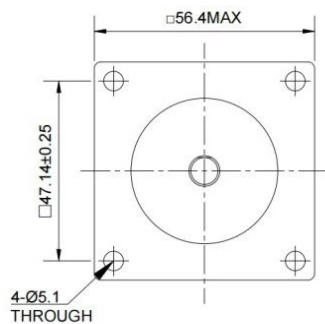
## Size Details

1.D: Direct Connect (For linear actuators with NEMA 23 motors, there is only one mounting method:)

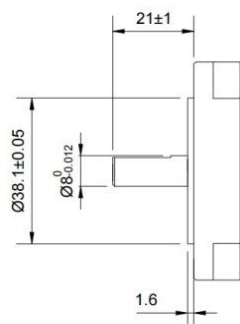


Stroke	60	110	210	310	410	510
L1	220	270	370	470	570	670
L2	150	200	300	400	500	600
G	25	50	50	50	50	50
K	100	100	200	100	200	100
n	2	2	3	4	5	6
m	2	2	2	4	3	6
KG	1.7	2.1	2.7	3.3	3.9	4.6

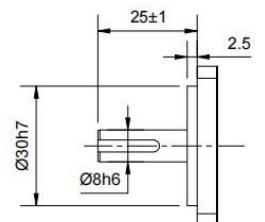
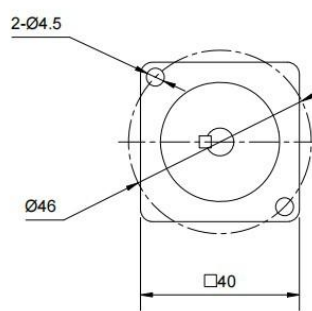
## Reference motor size:



NEMA 23

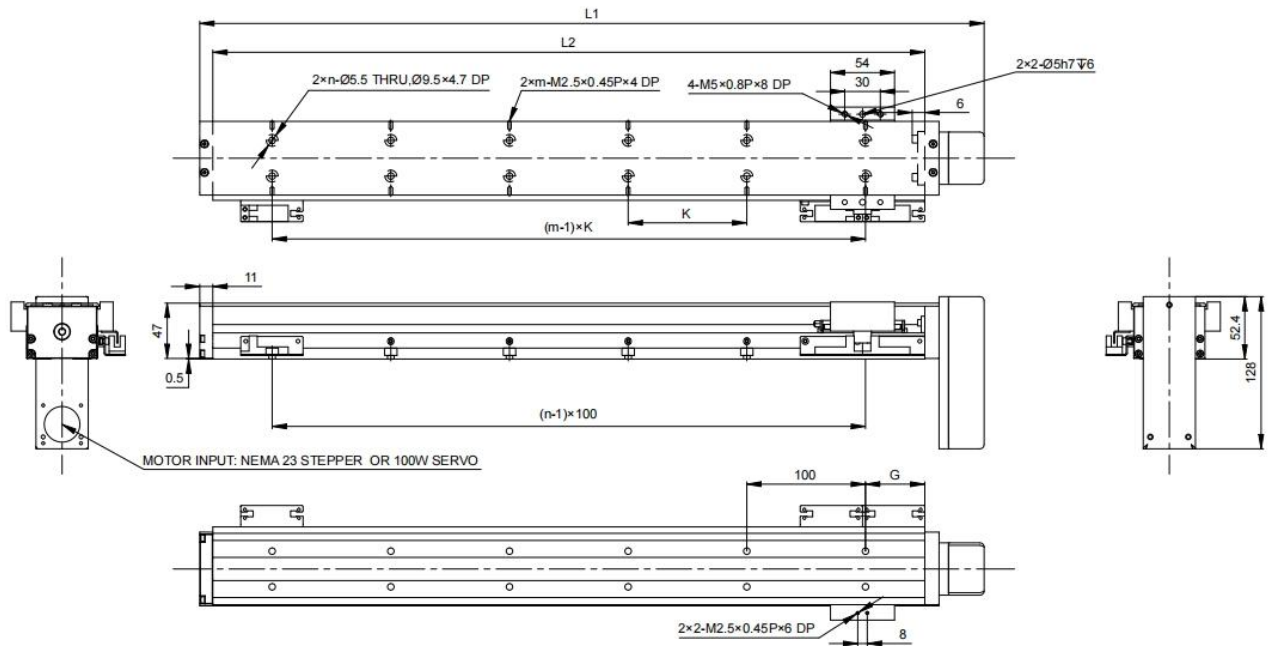


(100W)40mm Servo



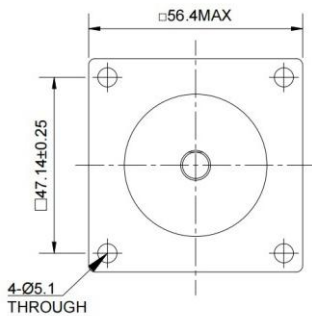


**2.B: Under Fold**

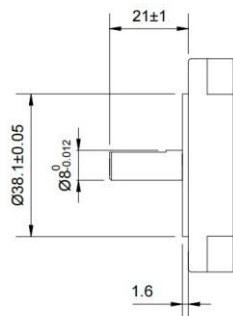


Stroke	60	110	210	310	410	510
L1	211	261	361	461	561	661
L2	150	200	300	400	500	600
G	25	50	50	50	50	50
K	100	100	200	100	200	100
n	2	2	3	4	5	6
m	2	2	2	4	3	6
KG	2.3	2.7	3.3	3.9	4.5	5.2

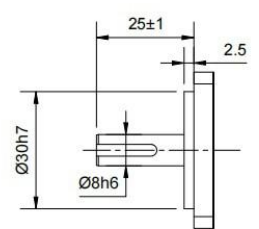
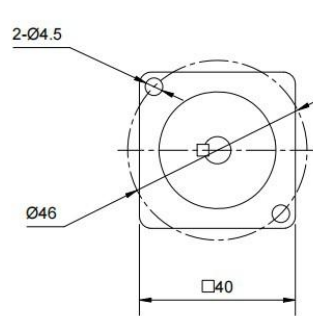
**Reference motor size:**

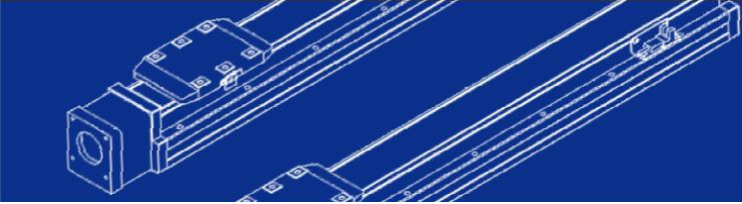


**NEMA 23**

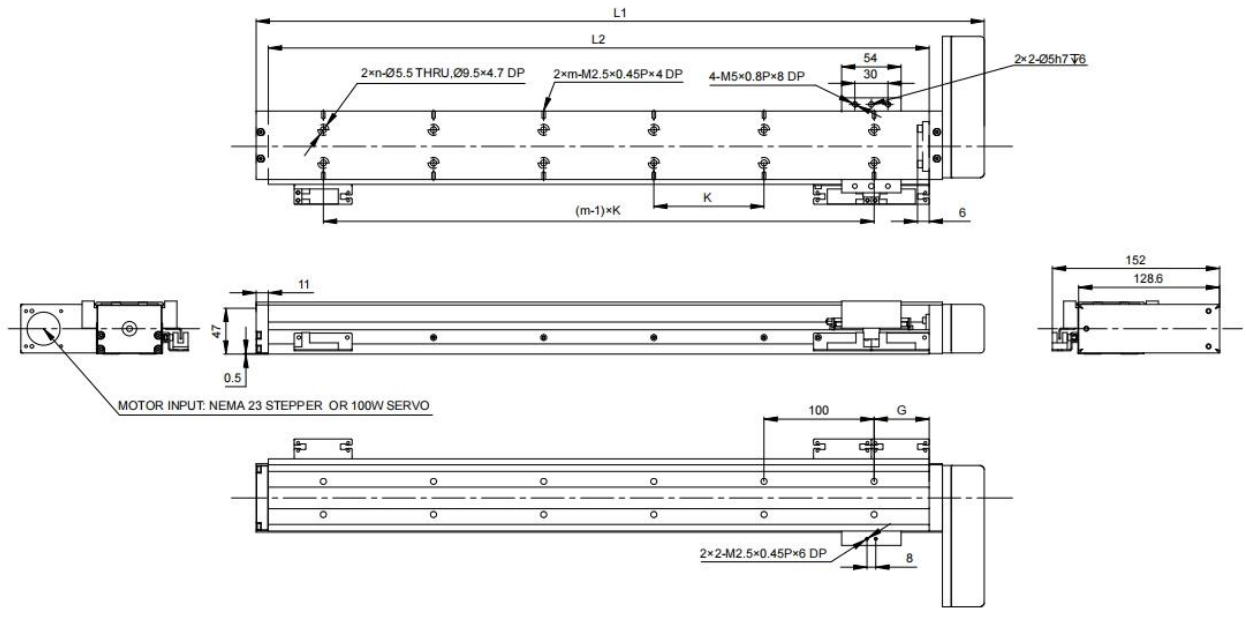


**(100W)40mm Servo**



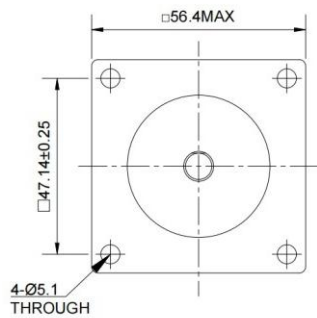


### 3.L: Left Fold

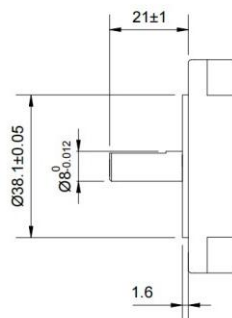


Stroke	60	110	210	310	410	510
L1	211	261	361	461	561	661
L2	150	200	300	400	500	600
G	25	50	50	50	50	50
K	100	100	200	100	200	100
n	2	2	3	4	5	6
m	2	2	2	4	3	6
KG	2.3	2.7	3.3	3.9	4.5	5.2

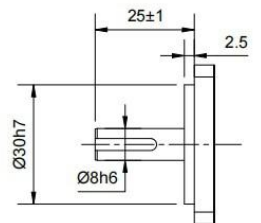
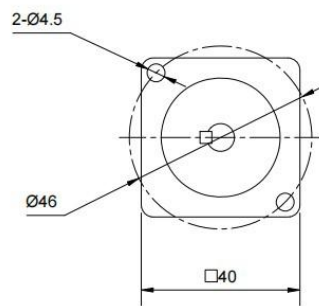
### Reference motor size:

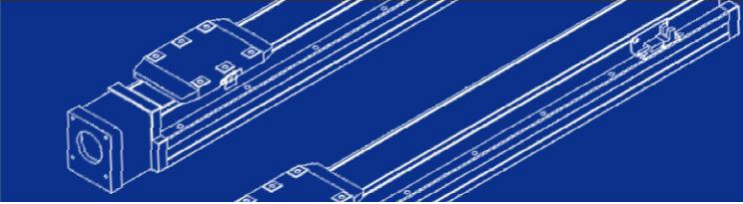


**NEMA 23**

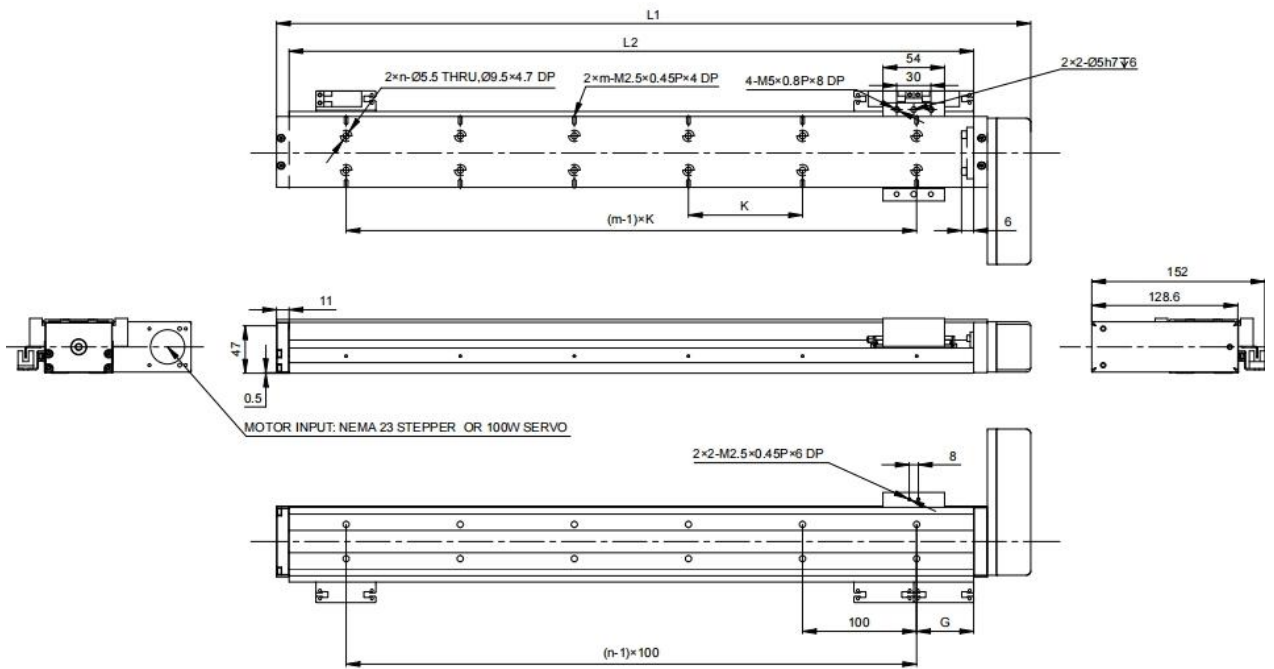


**(100W)40mm Servo**



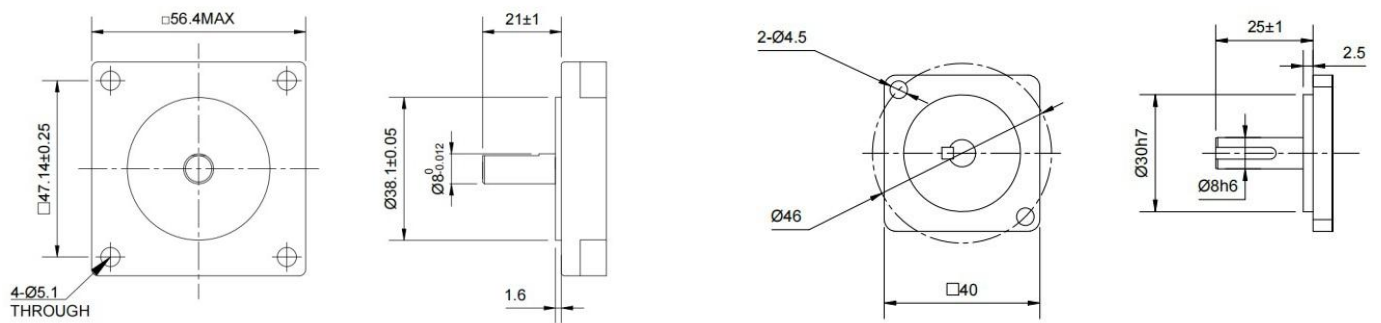


## 4. R: Right Fold



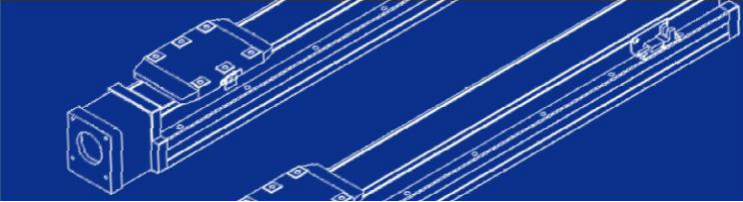
Stroke	60	110	210	310	410	510
L1	211	261	361	461	561	661
L2	150	200	300	400	500	600
G	25	50	50	50	50	50
K	100	100	200	100	200	100
n	2	2	3	4	5	6
m	2	2	2	4	3	6
KG	2.3	2.7	3.3	3.9	4.5	5.2

## Reference motor size:

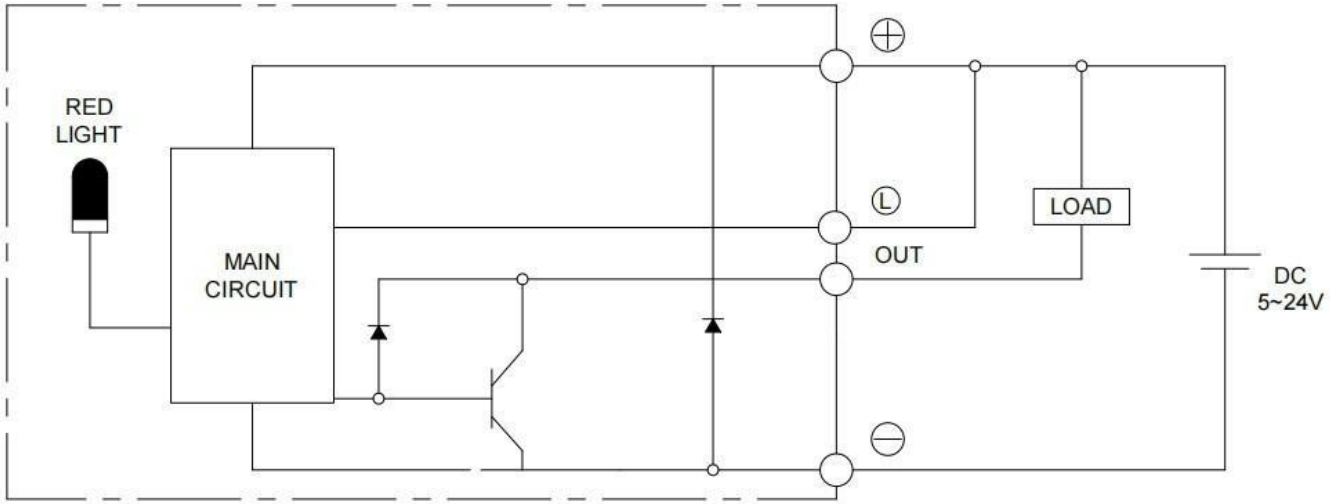


NEMA 23

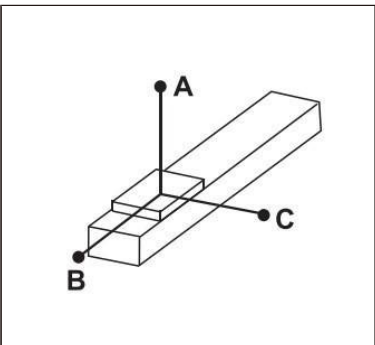
(100W)40mm Servo



## Sensor Wiring

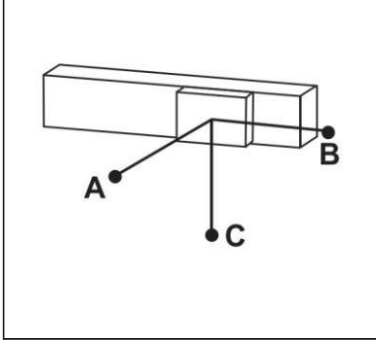


### Horizontal installation



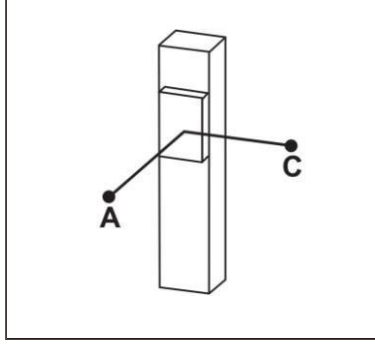
		A	B	C
Lead 5	10KG	845	98	130
	20KG	572	48	59
	30KG	351	25	33
Lead 10	5KG	780	189	241
	10KG	481	91	111
	20KG	325	55	68
-	-	-	-	-
-	-	-	-	-
-	-	-	-	-
-	-	-	-	-

### Wall installation



		A	B	C
Lead 5	10KG	130	98	845
	20KG	59	48	546
	30KG	33	25	338
Lead 10	5KG	241	189	780
	10KG	111	88	481
	20KG	68	55	325
-	-	-	-	-
-	-	-	-	-
-	-	-	-	-
-	-	-	-	-

### Vertical installation



		A	C
Lead 5	6KG	189	189
	8KG	143	145
	10KG	117	117
Lead 10	1KG	1040	1040
	3KG	338	338
	6KG	201	202
-	-	-	-
-	-	-	-
-	-	-	-
-	-	-	-

(Unit: mm)

The torque value in the chart indicate the center of gravity;  
 Operation life is 10,000km when the product is using under the specified conditions.