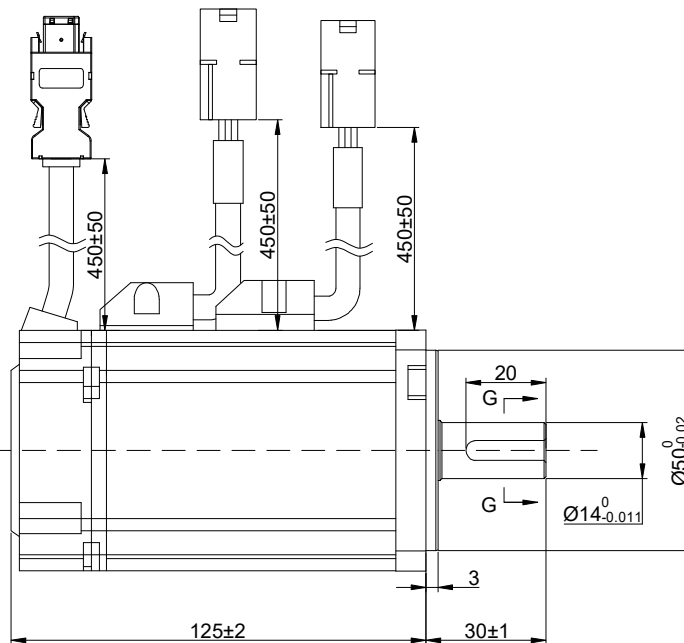
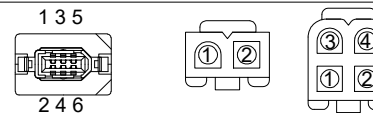
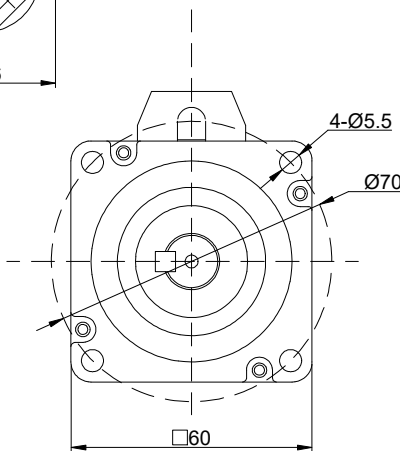
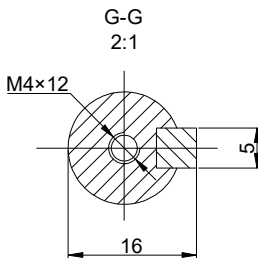
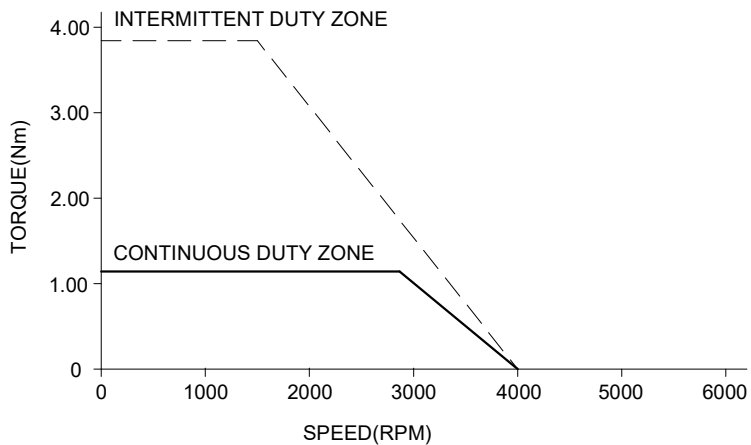


SPEED - TORQUE CURVE



SPECIFICATION	VALUE
RATED POWER(W)	400
RATED VOLTAGE(VDC)	48
RATED TORQUE(Nm)	1.27
PEAK TORQUE(Nm)	3.81
RATED SPEED(RPM)	3000
RATED CURRENT(Amp)	10.2
BACK EMF CONST(V/KRPM)	±10%
TORQUE CONST(Nm/Amp)	0.124
LINE RESISTANCE(Ω)	0.33±10%
LINE INDUCTANCE(mH)	0.65±20%
INERTIA(Kg <sup>2</sup> •m)	0.51×10 <sup>-4</sup>
INSULATION CLASS	F
IP RATING	IP65
POLES	10
ELECTRICAL TIME CONSTANT(ms)	1.97
ENCODER RESOLUTION	17 bit
WEIGHT(KG)	1.29

COMMENT:  
 1.DYNAMIC AXIAL LOAD: 74N MAX;  
 2.DYNAMIC RADIAL LOAD : 245N MAX

SEQUENCE OF MOTOR CABLES				
PIN-NO.	1	2	3	4
DESCRIPTION	U	V	W	PE
COLOUR	RED	YEL	BLU	YEL/GRN

ENCODER CABLE SEQUENCE						
PIN-NO.	1	2	3	4	5	6
DESCRIPTION	+5V	GND	-	-	485+	485-
COLOUR	RED	BLK	-	-	BLU	YEL

BRAKE SPECIFICATIONS	
HOLDING TORQUE(Nm)	1.52
VOLTAGE(V)	24
POWER(W)	7.3
CURRENT(A)	0.32



	APVD	MYX	12.9.2024
	CHKD		
2:1	DRN	LDJ	11.4.2024
SCALE	SIGNATURE		DATE

DC SERVO MOTOR

DSY60-400L2B2M17S