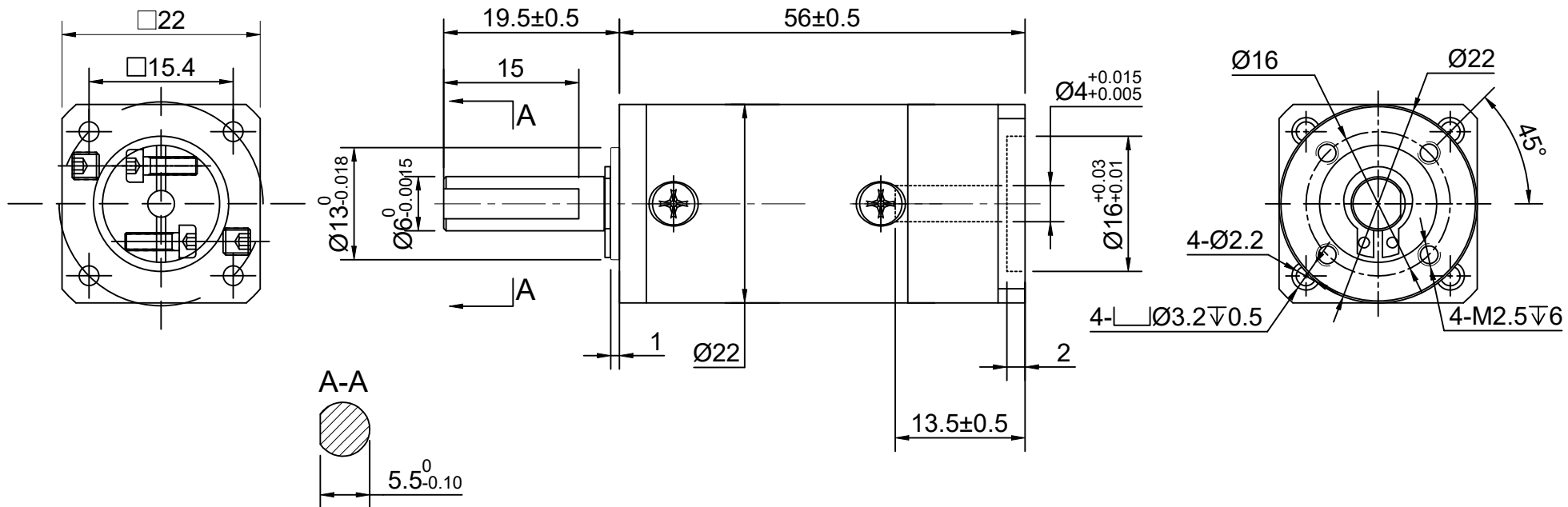


REV.	REVISION RECORD	BY	DATE
0	ORIGIN	LJ	10.30.2025



SPECIFICATION	CONNECTION	VALUE
GEAR RATIO		100
EFFICIENCY		90%
BACKLASH@NO-LOAD(arcmin)		<=25
MAX.PERMISSIBLE TORQUE(Nm)[lb-in]		6.00[53.10]
MOMENT PERMISSIBLE TORQUE(Nm)[lb-in]		12.00[106.20]
SHAFT MAXIMUM AXIAL LOAD(N)		100
SHAFT MAXIMUM RADIAL LOAD(N)		300
GEARBOX MATCHING MOTOR'S INPUT SHAFT LENGTH (mm)		6.5~10.5
RATED INPUT SPEED(RPM)		1000
MAX. INPUT SPEED(RPM)		2000
NOISE(dB)		<=55
WATERPROOF RATING		IP54
LIFE(h)		20000
WORKING TEMPERATURE		-20°C~150°C[-4°F~302°F]

DIMENSIONS ARE IN MILLIMETERS. TOLERANCES AS BELOW: DECIMALS ANGLES X ±0.5 ±2° X.X ±0.25 X.XX ±0.13	
THIRD ANGLE PROJECTION	
SIGNATURE	DATE
DRN LJ	10.30.2025
APVD MYX	10.30.2025

STEPPERONLINE®			
PLANETARY GEARBOX			
EGS8-G100			
REV.	0	SCALE	2:3
DWG NO.	A3794		