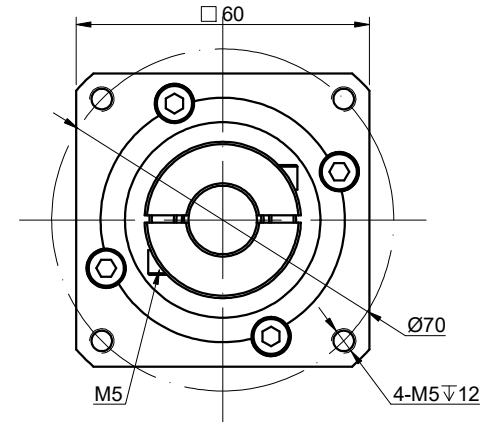
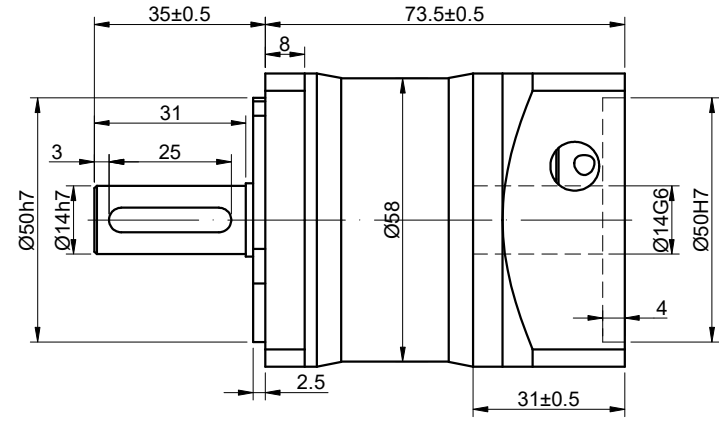
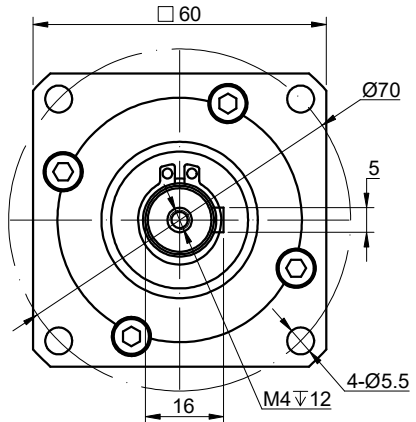


REV.	REVISION RECORD	BY	DATE
0	ORIGIN	LDJ	3.13.2024



SPECIFICATION	CONNECTION	VALUE
GEAR RATIO		3
EFFICIENCY		96%
BACKLASH@NO-LOAD(arcmin)		<=10
MAX.PERMISSIBLE TORQUE(Nm)[lb-in]		16.00[141.61]
MOMENT PERMISSIBLE TORQUE(Nm)[lb-in]		32.00[283.22]
SHAFT MAXIMUM AXIAL LOAD(N)		230
SHAFT MAXIMUM RADIAL LOAD(N)		450
GEARBOX MATCHING MOTOR'S INPUT SHAFT LENGTH (mm)		12~31
RATED INPUT SPEED(RPM)		3000
MAX. INPUT SPEED(RPM)		6000
NOISE(dB)		<=55
WATERPROOF RATING		IP54
LIFE(h)		20000
WORKING TEMPERATURE		-20°C~150°C[-4°F~302°F]

DIMENSIONS ARE IN MILLIMETERS.
 TOLERANCES AS BELOW:
 DECIMALS ANGLES
 X ±0.5 ±2°
 X.X ±0.25
 X.XX ±0.13

THIRD ANGLE PROJECTION	
SIGNATURE	DATE
DRN LDJ	3.13.2024
APVD HW	3.14.2024

STEPPERONLINE®

GEARBOX

TG60-G3

REV.	1	SCALE	2:3	DWG NO.	A3007
------	---	-------	-----	---------	-------