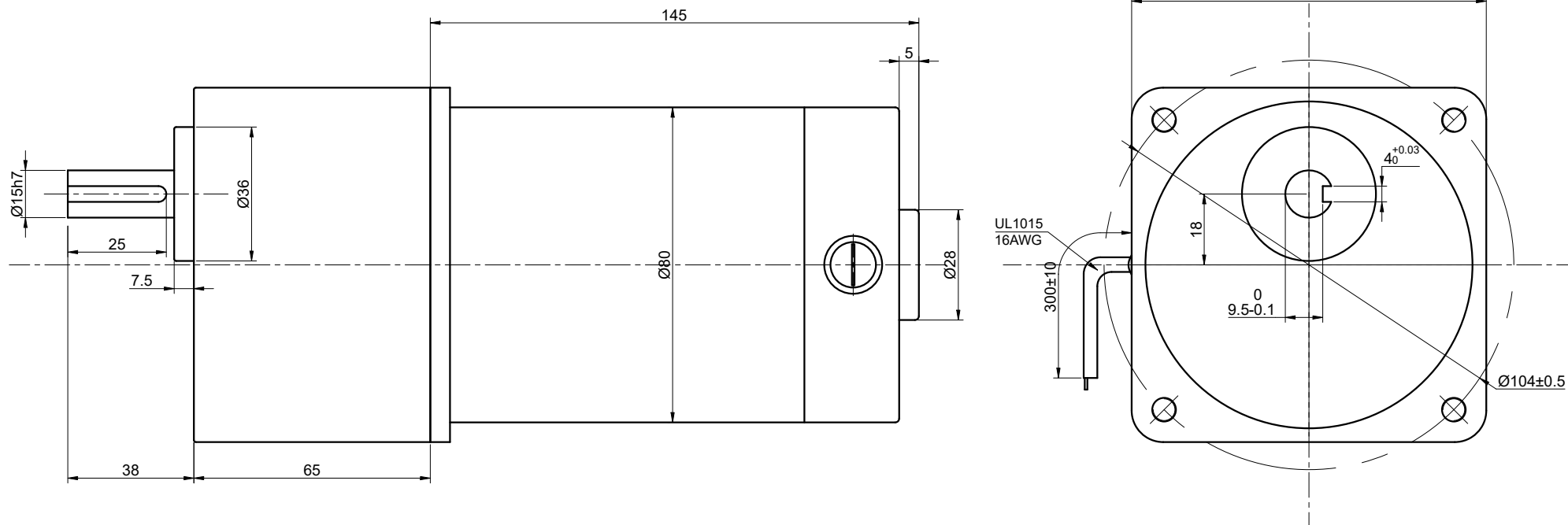


CUSTOMER'S MODEL: NO MODEL
 END COVER COLOR: BLU

REV.	REVISION RECORD	BY	DATE
0	ORIGIN	LJ	9.10.2025



- NOTES:
- 1.THE LEAD WIRE OF BIG MOTOR CAN NOT BE PULLED FORCIBLY TO AVOID INTERNAL POOR CONDUCTIVITY.
 - 2.PREVENT GEAR MOTOR FROM BEING SHOCKED OR DROPPING IN MOUNTING PROCESS.IT IS PROHIBITED TO STRIKE AND CRUSH DIRECTLY ON REDUCER OUTPUT SHAFT.
 - 3.IT IS NECESSARY TO BE CAREFUL THAT THE ADHESIVE DOES NOT SPREAD ALONG THE SHAFT AND FLOW INTO THE BEARING.
 - 4.DO NOT TURN A GEARED MOTOR BY ITS OUTPUT SHAFT WHEN, FOR EXAMPLE, ARRANGING ITS POSITION SO AS TO INSTALL IT.
 - 5.USE WITH A LOAD THAT EXCEEDS THE RATED TORQUE WILL BE REDUCE THE LIFETIME OF GEAR MOTOR.
 - 6.CHECK MOTOR RUNNING WHEN IT IS POWER ON BEFORE INSTALLATION AND MAKE SURE PERFORMANCE MEET REQUEST .

SPECIFICATION	VALUE
GEAR RATIO	10
MAX.PERMISSIBLE TORQUE(Nm)	20
RATED VOLTAGE(V)	24
RATED POWER(W)	150
RATED SPEED(RPM)	300
RATED SPEED W/T GEARBOX(RPM)	3000
RATED CURRENT(A)	8.2
NO LOAD CURRENT(A)	1.15
RATED TORQUE(Nm)	4.78
BRUSH SERVICE LIFE(h)	2000

THIS DOCUMENT SHALL NOT BE REPRODUCED NOR SHALL THE INFORMATION CONTAINED HEREIN BE USED BY OR DISCLOSED TO OTHERS UNLESS EXPRESSLY AUTHORIZED IN BY WRITING STEPPERONLINE.

DIMENSIONS ARE IN MILLIMETERS.
 TOLERANCES AS BELOW:
 DECIMALS ANGLES
 X ±0.5 ±2°
 X.X ±0.25
 X.XX ±0.13

THIRD ANGLE PROJECTION



BRUSHED DC GEARBOX MOTOR

F5D150-24GU-30S/5GU10KB

SIGNATURE		DATE
DRN	LJ	9.10.2025
APVD	YSX	9.10.2025

REV.	0	SCALE	1:1	DWG NO.	A5002
------	---	-------	-----	---------	-------