

# 直角减速电机 RIGHT ANGLE GEAR MOTOR

## 120W 90mm

STEPPERONLINE®



### 电机型号/性能 List of motor characteristics

电机型号 Motor Model	输出功率 Output Power	电压 Voltage	频率 Frequency	电流 Current	额定转速 Rated Speed	额定转矩 Rated Torque	启动转矩 Starting Torque	运行电容 Capacitor
5IK120GU-CF	120	1ph220	50	0.87	1350	874	663	6.0/450
5IK120GU-AF	120	1ph110	50	1.79	1350	919	500	25.0/250
5IK120GU-SF	120	3ph220	50	0.60	1350	879	2800	/
5IK120GU-S3F	120	3ph380	50	0.42	1350	879	2660	/

● 各种安全规格以电机铭牌上的型号名取得认证。● 注：“A”型号中电压为110V时，配置电容器容量以实际铭牌为准。● 如需调速电机参照p58，电磁制动减速电机参照p80。  
 ● When the motor is approved under various safety standards, the model name on the nameplate is the approved model name. ● Note "sAit" means the voltage 110v. the assembly capacitor value it is according to the label. ● For speed control gear motor, please refer to page 73, for brake gear motor, please refer to page 95.

### 减速箱减速比/性能对照表 Gear reduction ratio/performance comparison

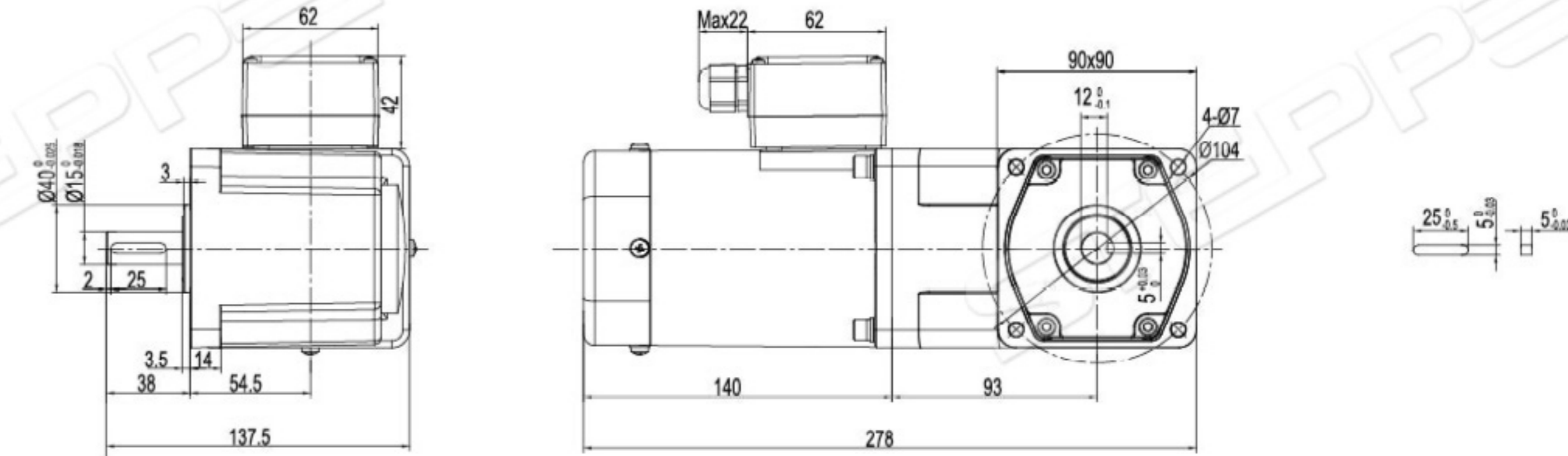
减速比 Gear Ratio	3	5	6	7.5	9	10	12.5	15	18	20	25	30	36	40	50	60	75	90	100	120	150	180
转速 Speed r/min	450	270	225	180	150	135	108	90	75	67.5	54	45	37.5	33.75	27	22.5	18	15	13.5	11.25	9	7.5
转矩 Torque N.m	1.7	2.8	3.4	4.6	5.6	6.2	7.7	9.3	11	12	15	19	20	22	28	34	40	40	40	40	40	40

● 表中转速是以电机的平均转速（50Hz：1350r/min、60Hz：1550r/min）为基数除以减速比而算出的数值。实际转速将随负载大小而变化，变化范围2~20%。  
 ● 表中 色框表示输出轴的旋转方向与电机旋转方向相反。  
 ● 表中转矩是以电机额定转矩 × 减速比 × 传动效率计算而得。  
 ● 减速箱的最大容许转矩为20N.M。  
 ● In the table, the speed is calculated from the base of the motor's average speed (50Hz: 1350r/min, 60Hz: 1550r/min) divided by the deceleration ratio. The actual speed will vary with the load, ranging from 2% to 20%.  
 ● The box in the table indicates that the rotation direction of the output axis is opposite to that of the motor.  
 ● Table transfer torque is calculated from motor rated torque \* deceleration ratio \* transmission efficiency.  
 ● The maximum allowable torque of the decelerator is 20N.M.

### 外形尺寸 (单位mm) Dimension (unit mm)

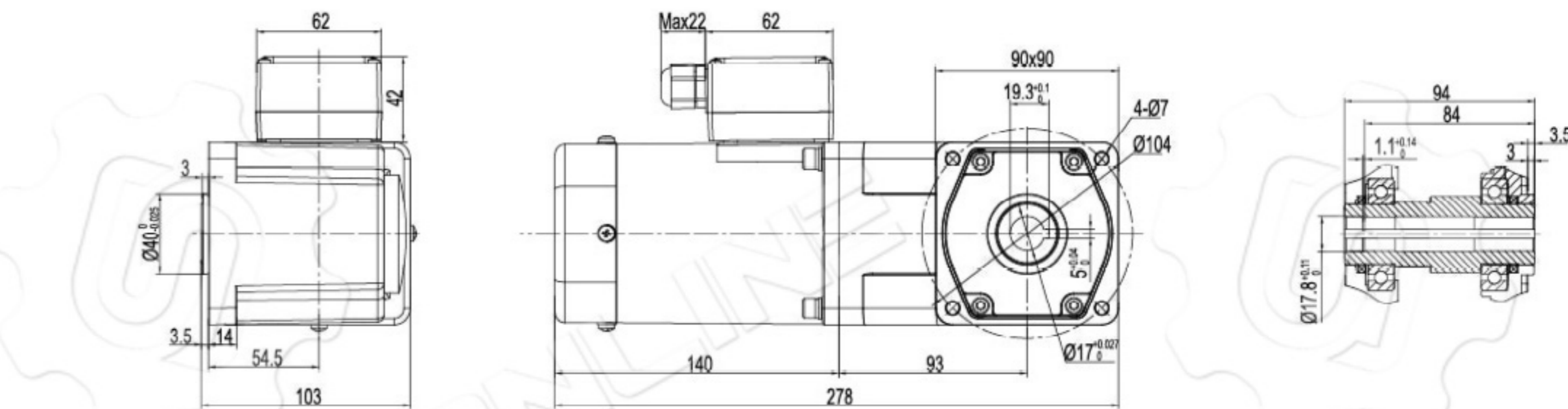
#### 感应、阻尼尺寸图 INDUCTION, REVERSIBLE TYPE DRAWING

● 弧锥齿实心轴 5IK120GU-CFT/5GU □ RT  
重量 Weight: 6.6kg



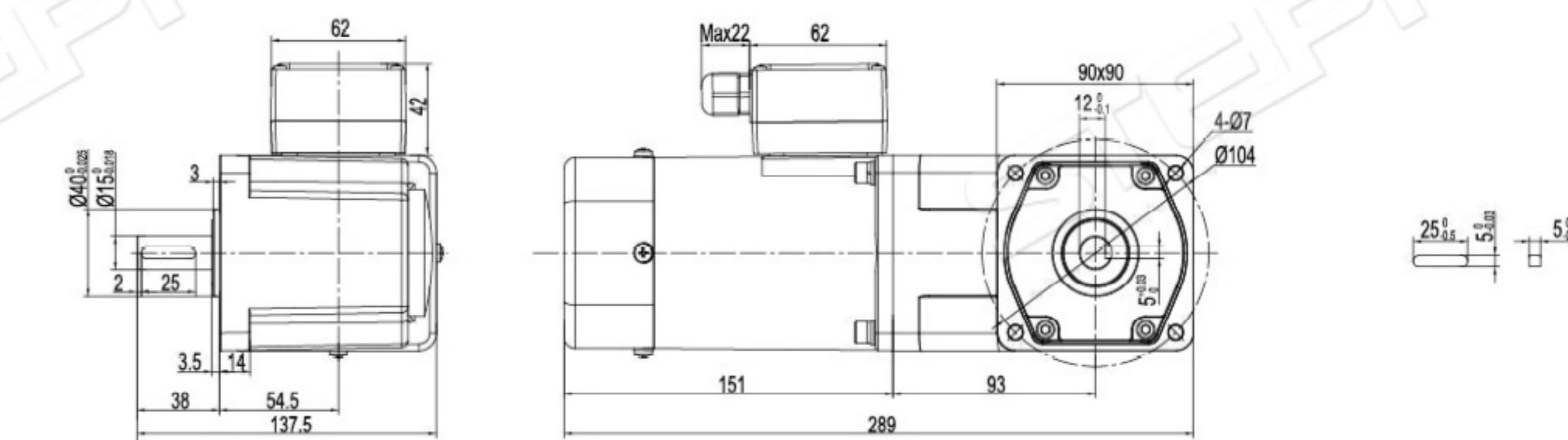
● 键 (减速器附件)

● 弧锥齿空心轴 5IK120GU-CFT/5GU □ RC  
重量 Weight: 6.4kg



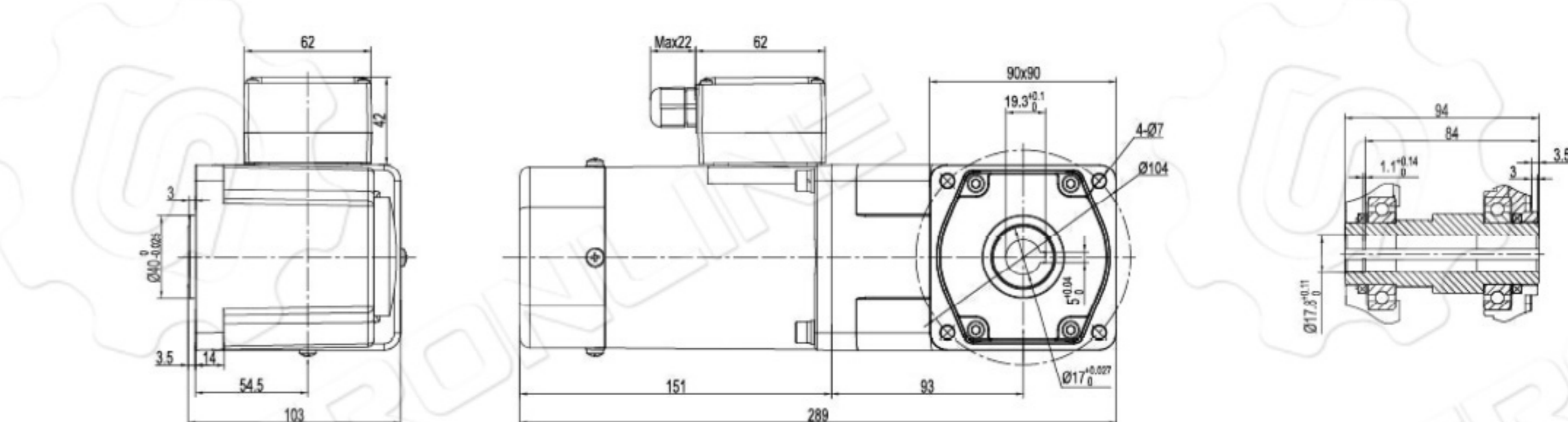
#### 调速尺寸图 SPEED CONTROL TYPE DRAWING

● 弧锥齿实心轴 5IK120RGU-CFT/5GU □ RT  
重量 Weight: 6.7kg



● 键 (减速器附件)

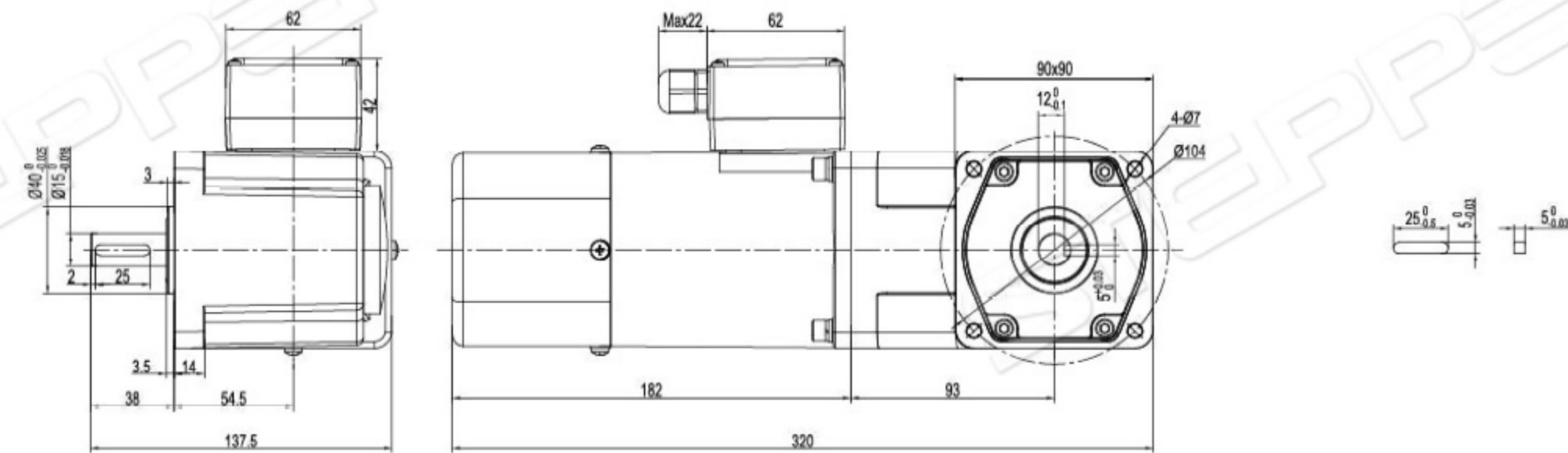
● 弧锥齿空心轴 5IK120RGU-CFT/5GU □ RC  
重量 Weight: 6.5kg



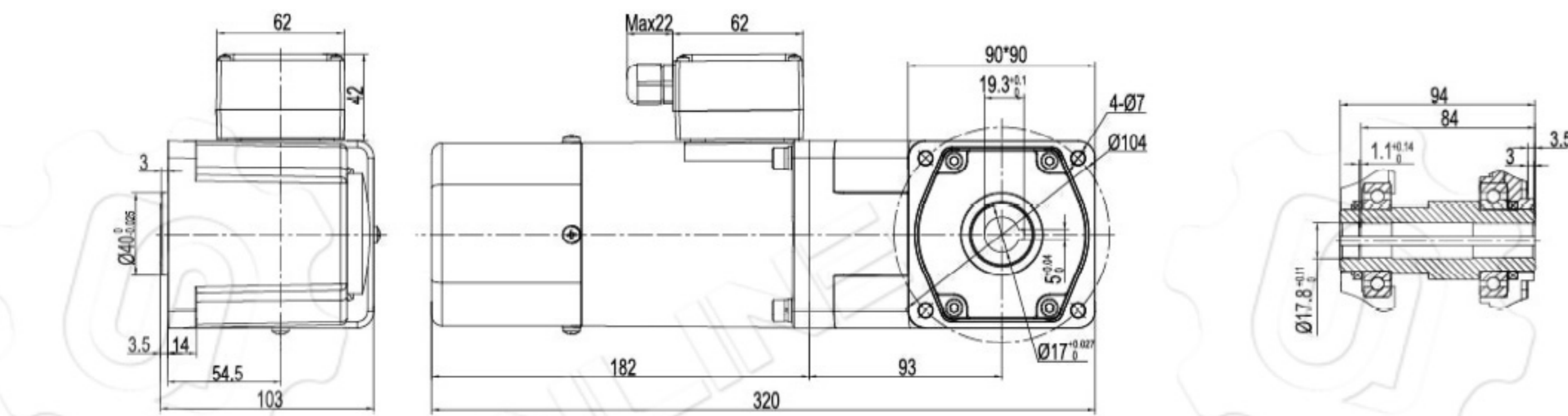
## 电磁制动尺寸图 BRAKE TYPE DRAWING

●弧锥齿实心轴 5RK120GU-CMFT/5GU □ RT  
重量 Weight: 7.4kg

●键 (减速器附件)



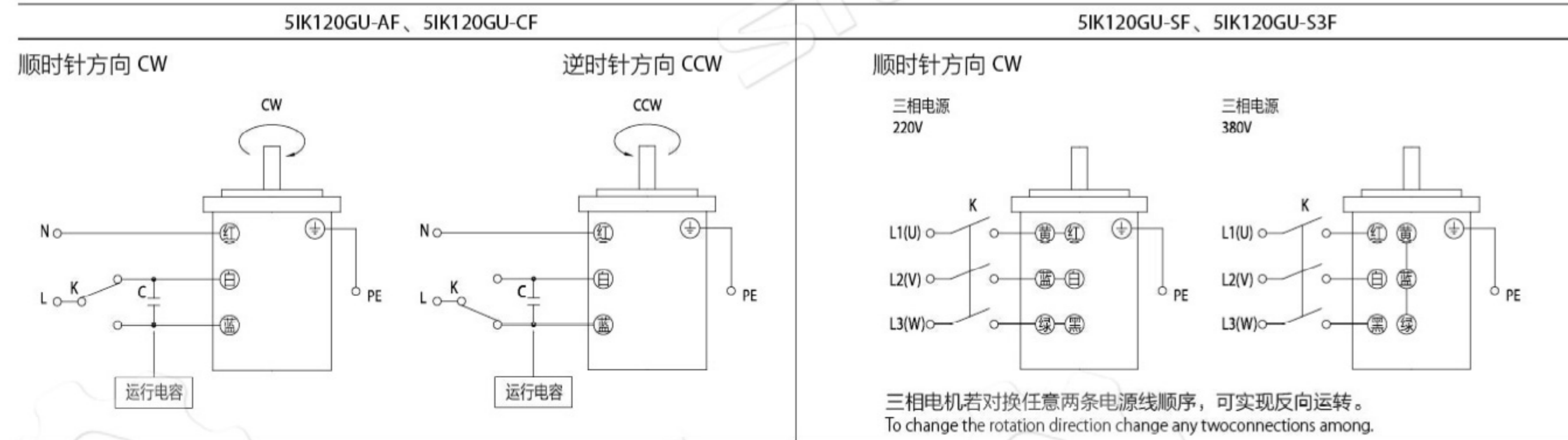
●弧锥齿空心轴 5RK120GU-CMFT/5GU □ RC  
重量 Weight: 7.2kg



注: 接线盒可选, 详见 P148。

## ●接线图 Wiring Diagram

- 运转方向指从电机轴看来的方向。CW 表示顺时针方向, CCW 表示逆时针方向。
- 表中所记型号为齿轮轴型, 圆轴型亦同。
- The direction of motor rotation is as viewed from the shaft end of motoc CW represents the clockwise direction, while CCW represents the counterclockwise direction.
- Name Indicated in the list is pinion shaft we, also valid for the equivalent round shaft type.



## ●请注意 Note

单相电机运转方向的转换应在电机停止后进行。  
若在电机运转时转换运转方向, 可能发生无法转换运转方向或须费时较久的情况。  
Change the direction of single-phase motor rotation only after bring the motor to a stop.  
If an attempt is made to change the direction of rotation while the motor is rotating, motor may ignore reversing command or change its direction of rotation after some delay.