

直角减速电机 RIGHT ANGLE GEAR MOTOR

90W 90mm

STEPPERONLINE®



电机型号/性能 List of motor characteristics

| 电机型号 Motor Model | 输出功率 Output Power | 电压 Voltage | 频率 Frequency | 电流 Current | 额定转速 Rated Speed | 额定转矩 Rated Torque | 启动转矩 Starting Torque | 运行电容 Capacitor |
|---------------------|----------------------|---------------|-----------------|---------------|---------------------|----------------------|-------------------------|-------------------|
| 5IK90GU-CF | 90 | 1ph220 | 50 | 0.64 | 1350 | 643 | 459 | 5.0/450 |
| 5IK90GU-AF | 90 | 1ph110 | 50 | 1.26 | 1350 | 646 | 475 | 20.0/250 |
| 5IK90GU-SF | 90 | 3ph220 | 50 | 0.53 | 1350 | 625 | 2800 | / |
| 5IK90GU-S3F | 90 | 3ph380 | 50 | 0.37 | 1350 | 625 | 2660 | / |

●各种安全规格以电机铭牌上的型号名取得认证。●注：“-A”型号中电压为110V时，配置电容器容量以实际铭牌为准。●如需调速电机参照p56，电磁制动减速电机参照p77。

● When the motor is approved under various safety standards, the model name on the nameplate is the approved model name. ● Note “sAlt” means the voltage 110v, the assembly capacitor value it is according to the label. ● For speed control gear motor, please refer to page 71, for brake gear motor, please refer to page 92.

减速箱减速比/性能对照表 Gear reduction ratio/performance comparison

| 减速比 Gear Ratio | 3 | 5 | 6 | 7.5 | 9 | 10 | 12.5 | 15 | 18 | 20 | 25 | 30 | 36 | 40 | 50 | 60 | 75 | 90 | 100 | 120 | 150 | 180 |
|-------------------|-----|-----|-----|-----|-----|-----|------|-----|-----|------|----|----|------|-------|----|------|----|----|------|-------|-----|-----|
| 转速 Speed r/min | 450 | 270 | 225 | 180 | 150 | 135 | 108 | 90 | 75 | 67.5 | 54 | 45 | 37.5 | 33.75 | 27 | 22.5 | 18 | 15 | 13.5 | 11.25 | 9 | 7.5 |
| 转矩 Torque N.m | 1.3 | 2.1 | 2.5 | 3.5 | 4.2 | 4.6 | 5.8 | 7.0 | 8.4 | 9.3 | 12 | 14 | 15 | 17 | 21 | 25 | 32 | 38 | 40 | 40 | 40 | 40 |

●表中转速是以电机的平均转速（50Hz：1350r/min、60Hz：1550r/min）为基数除以减速比而算出的数值。实际转速将随负载大小而变化，变化范围2~20%。

●表中色框表示输出轴的旋转方向与电机旋转方向相反。

●表中转矩是以电机额定转矩 × 减速比 × 传动效率计算而得。

●减速箱的最大容许转矩为20N·M。

● In the table, the speed is calculated from the base of the motor's average speed (50Hz: 1350r/min, 60Hz: 1550r/min) divided by the deceleration ratio.

The actual speed will vary with the load, ranging from 2% to 20%.

● The color box in the table indicates that the rotation direction of the output axis is opposite to that of the motor.

● Table transfer torque is calculated from motor rated torque * deceleration ratio * transmission efficiency.

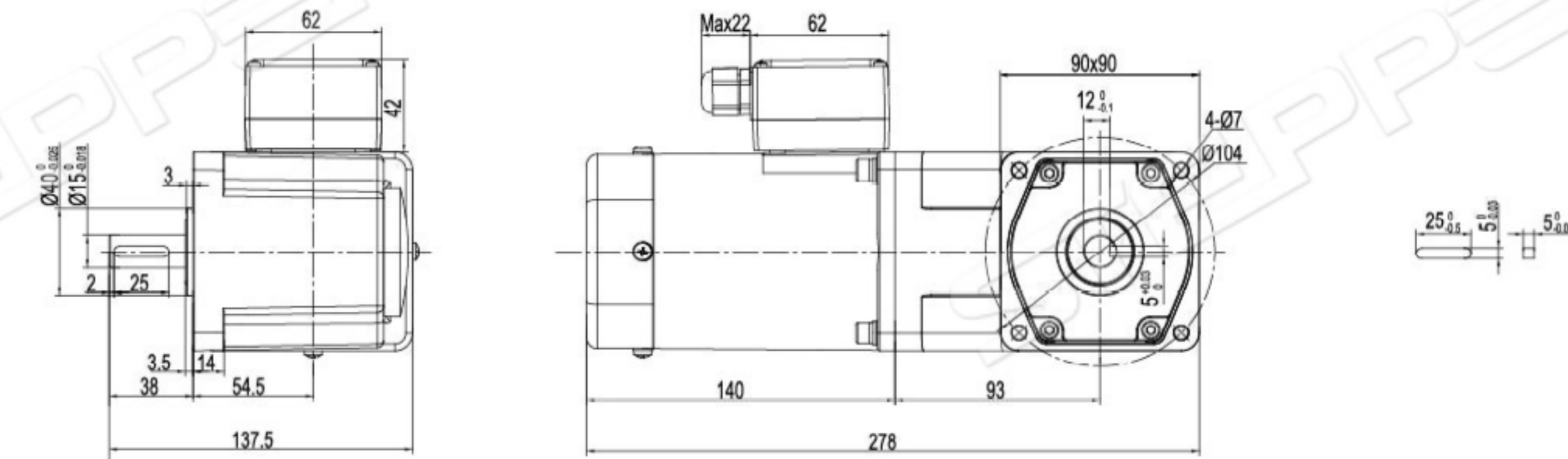
● The maximum allowable torque of the decelerator is 20N·M.

外形尺寸 (单位mm) Dimension (unit mm)

感应、阻尼尺寸图 INDUCTION、REVERSIBLE TYPE DRAWING

●弧锥齿实心轴 5IK90GU-CFT/5GU □ RT

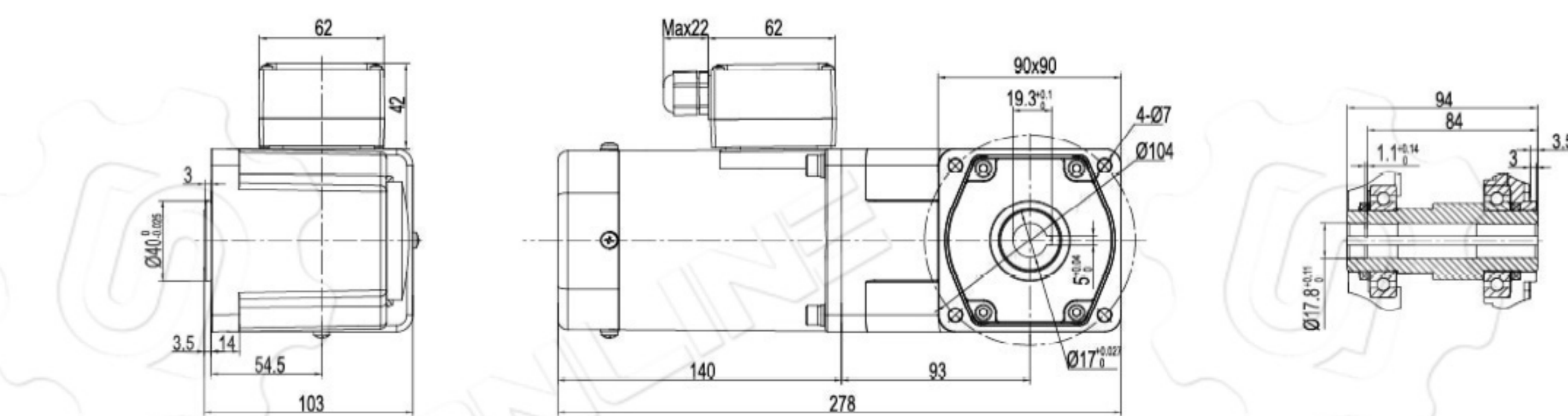
重量 Weight: 6.6kg



●键 (减速器附件)

●弧锥齿空心轴 5IK90GU-CFT/5GU □ RC

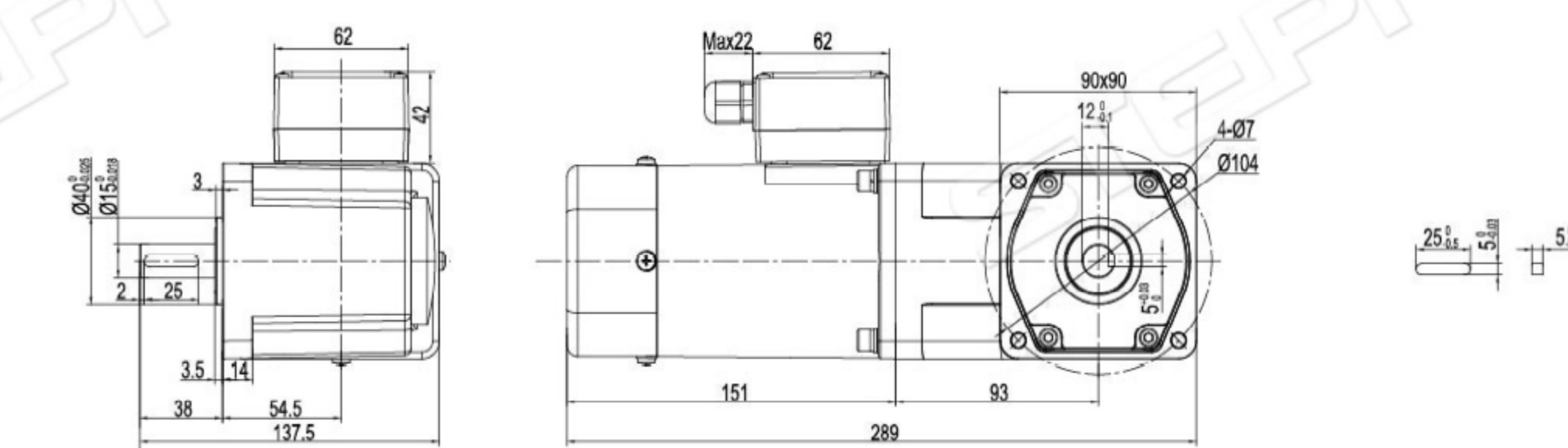
重量 Weight: 6.4kg



调速尺寸图 SPEED CONTROL TYPE DRAWING

●弧锥齿实心轴 5IK90RGU-CFT/5GU □ RT

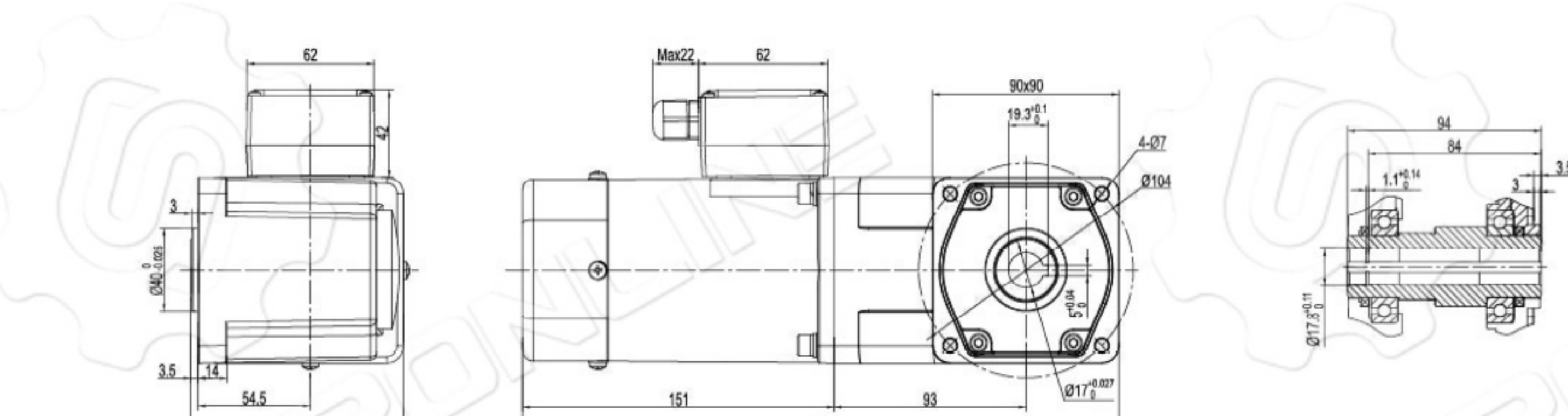
重量 Weight: 6.7kg



●键 (减速器附件)

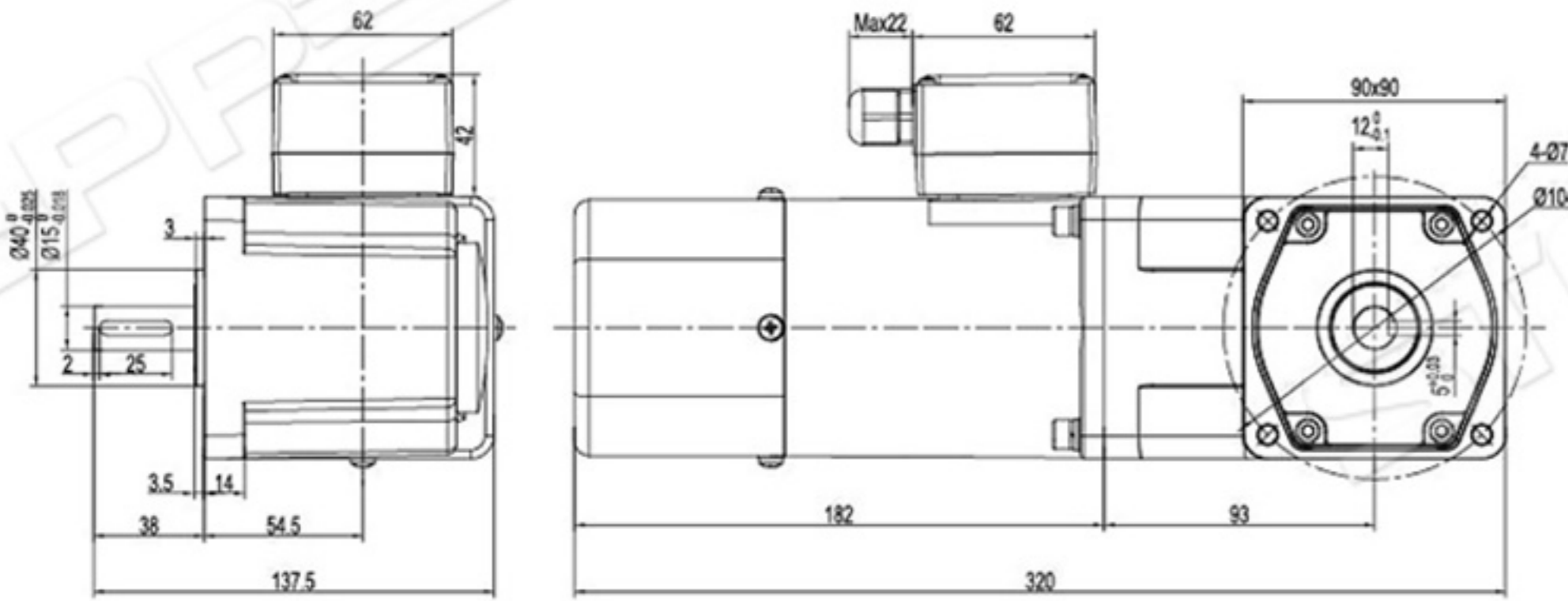
●弧锥齿空心轴 5IK90RGU-CFT/5GU □ RC

重量 Weight: 6.5kg



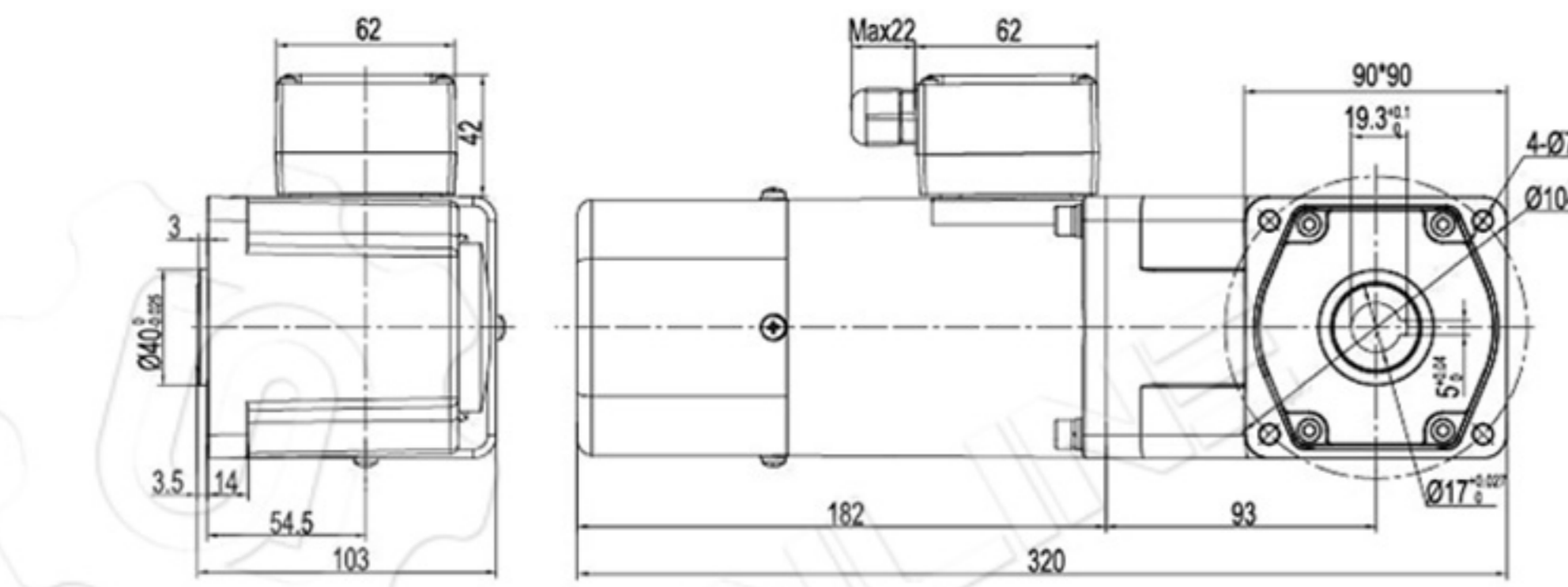
电磁制动尺寸图 BRAKE TYPE DRAWING

● 弧锥齿实心轴 5RK90GU-CMFT/5GU □ RT
重量 Weight: 7.4kg



● 键 (减速器附件)

● 弧锥齿空心轴 5RK90GU-CMFT/5GU □ RC
重量 Weight: 7.2kg

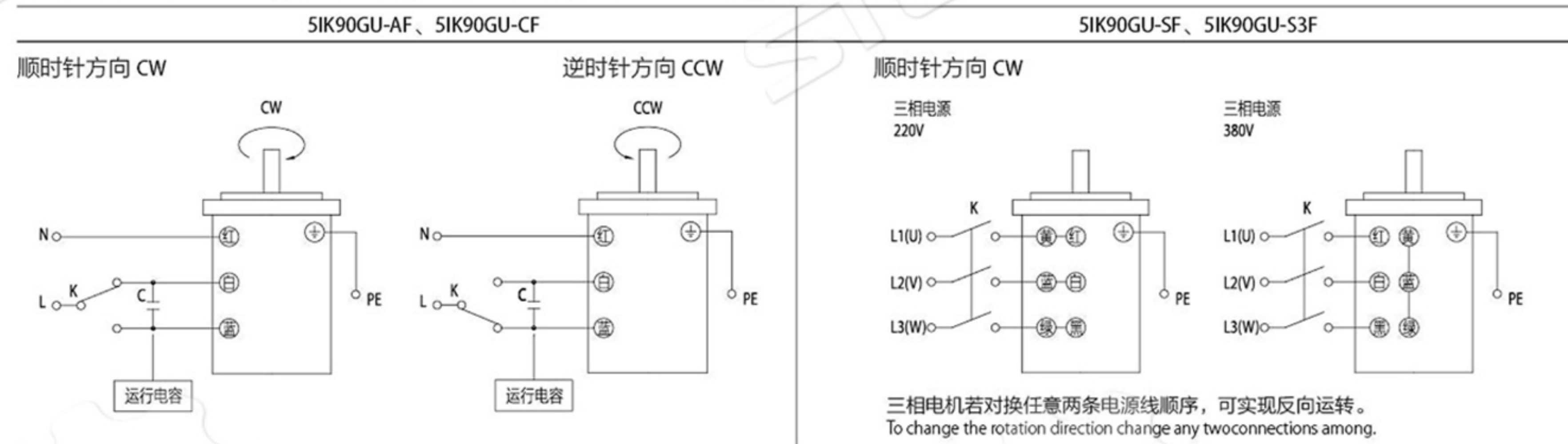


● 键 (减速器附件)

注: 接线盒可选, 详见 P148.

● 接线图 Wiring Diagram

- 运转方向指从电机轴看来的方向。CW 表示顺时针方向, CCW 表示逆时针方向。
- 表中所记型号为齿轮轴型, 圆轴型亦同。
- The direction of motor rotation is as viewed from the shaft end of motoc CW represents the clockwise direction, while CCW represents the counterclockwise direction.
- Name indicated in the list is pinion shaft we, also valid for the equivalent round shaft type.



● 请注意 Note

单相电机运转方向的转换应在电机停止后进行。
若在电机运转时转换运转方向, 可能发生无法转换运转方向或须费时较久的情况。
Change the direction of single-phase motor rotation only after bring the motor to a stop.
If an attempt is made to change the direction of rotation while the motor is rotating, motor may ignore reversing command or change its direction of rotation after some delay.