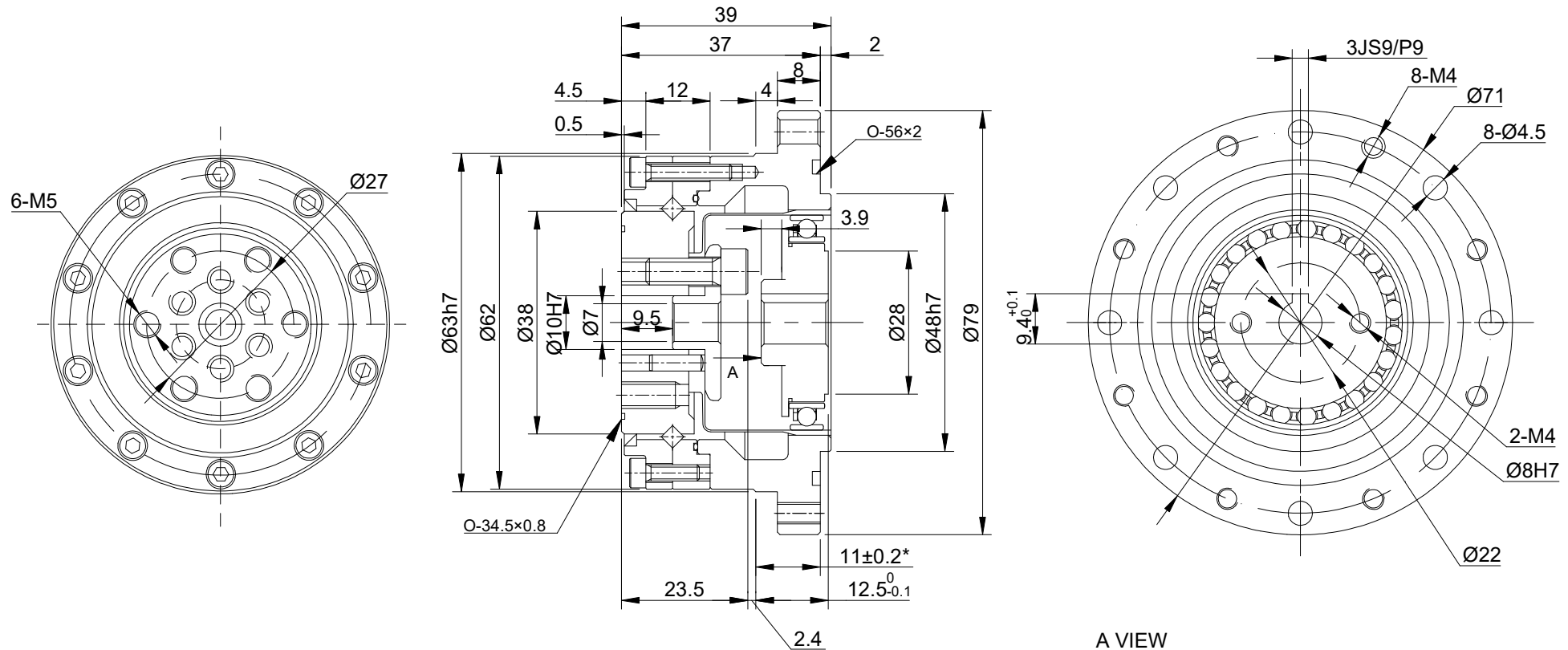


REV.	REVISION RECORD	BY	DATE
0	ORIGIN	LDJ	12.17.2025



SPECIFICATION	CONNECTION	VALUE
GEAR RATIO		50
BACKLASH@NO-LOAD(arcsec)		<=20
RATED TORQUE(INPUT SPEED 2000RPM)(Nm)[lb-in]		16.00[141.61]
MOMENT PERMISSIBLE TORQUE(Nm)[lb-in]		70.00[619.55]
PEAK START-STOP TORQUE(Nm)[lb-in]		34.00[300.93]
MAXIMUM INPUT SPEED ALLOWED(RPM)		7300
AVERAGE INPUT SPEED ALLOWED(RPM)		3500
WEIGHT(kg)		0.67
LIFE(h)		10000
AMBIENT TEMPERATURE		0°C~40°C[32°F~104°F]

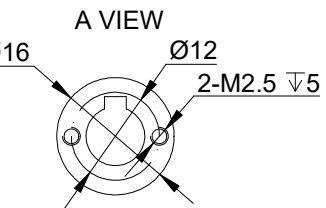
DIMENSIONS ARE IN MILLIMETERS.
TOLERANCES AS BELOW:
DECIMALS ANGLES
X ±0.5 ±2°
X.X ±0.25
X.XX ±0.13

THIRD ANGLE PROJECTION

SIGNATURE DATE

DRN LDJ 12.23.2025

APVD ZPJ 12.23.2025



STEPPERONLINE®

HARMONIC REDUCER

HSS-17-50-I-D8

REV.	0	SCALE	1:1	DWG NO.	A3314
------	---	-------	-----	---------	-------