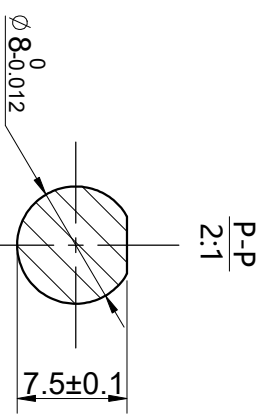
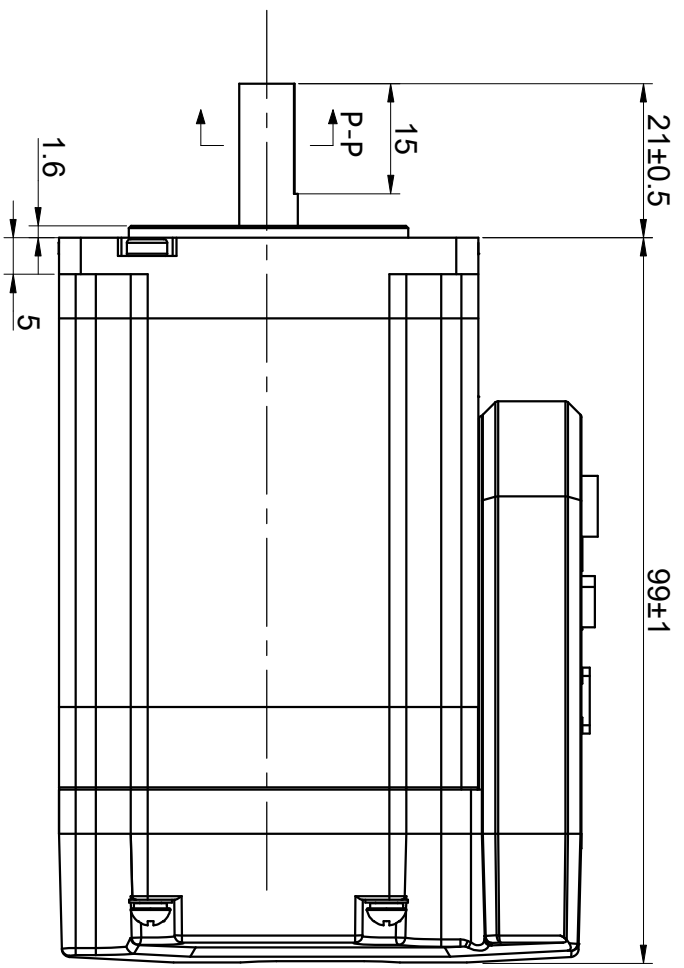
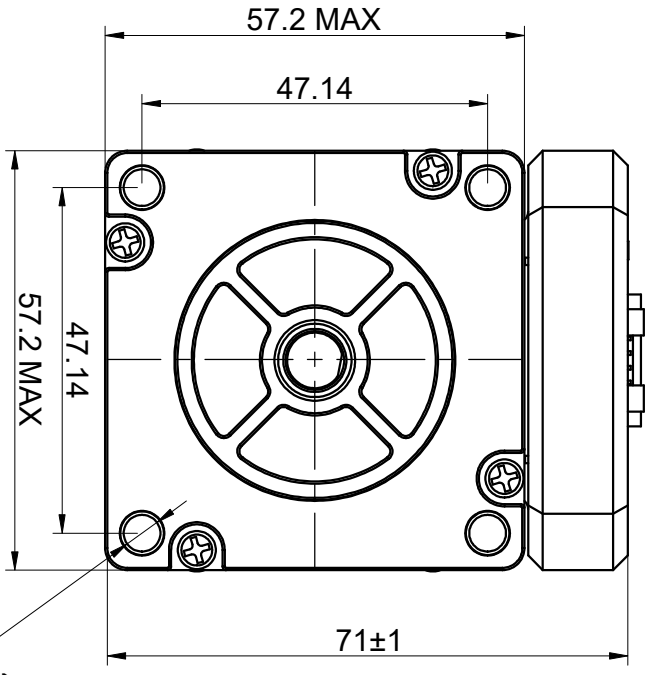


924E V ON GMD 62SR-75WCI ON TEGOM

CUSTOMER'S MODEL: NO MODEL
END COVER COLOR: BLACK

REV.	REVISION RECORD	BY	DATE
0	ORIGIN	HW	7.4.2024



SPECIFICATION	CONNECTION
POWER VOLTAGE(V)	BIPOLAR 20-50
PEAK CURRENT(A)	0.5-7.0
INPUT LOGICAL VOLTAGE(V)	12-24
OUTPUT CAPABILITY	24V@100mA
HOLDING TORQUE(Nm)[lb-in]	1.90[16.82]
STEP ANGLE(°)	1.80
STEP ACCURACY(NON-ACCUM)	±5.00%
MAX. BAUD RATE	115200
WEIGHT(Kg)[lb]	1.40[3.09]
AMBIENT TEMPERATURE	0°C~40°C[32°F~104°F]
INSULATION CLASS	B 130°C[266°F]
TEMPERATURE RISE	MAX. 80°C

STEP	A+	B+	A-	B-
1	+	+	-	-
2	-	+	+	-
3	-	-	-	+
4	+	-	-	+

STEP 2 PHASE-EX. WHEN FACING MOUNTING END (X)	CCW	CW
↑	←	→

DIMENSIONS ARE IN MILLIMETERS.
TOLERANCES AS BELOW:
DECIMALS ANGLES
X ±0.5
X.X ±0.25
X.XX ±0.13±2°
THIRD ANGLE PROJECTION

STEPPERONLINE®
INTEGRATED STEPPER MOTOR

IDM57-RS23

THIS DOCUMENT SHALL NOT BE REPRODUCED NOR SHALL THE INFORMATION CONTAINED HEREIN BE USED BY OR DISCLOSED TO OTHERS UNLESS EXPRESSLY AUTHORIZED IN WRITING BY STEPPERONLINE.	SIGNATURE	DATE	REV.	SCALE	DWG. NO.
	DRN HW APVD ZPJ	7.4.2024 7.5.2024	0	1:1	A3476