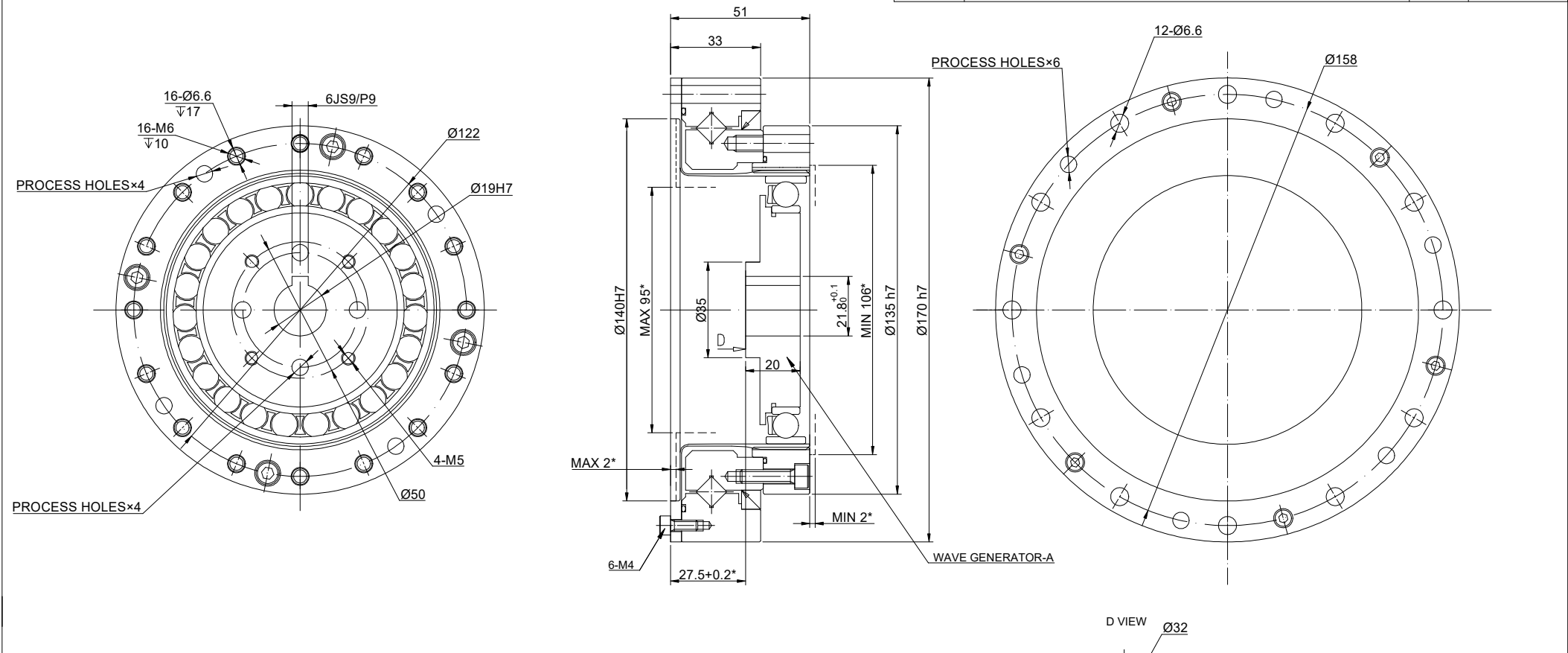


REV.	REVISION RECORD	BY	DATE
0	ORIGIN	LDJ	12.16.2025



SPECIFICATION	CONNECTION	VALUE
GEAR RATIO		100
BACKLASH@NO-LOAD(arcsec)		<=20
RATED TORQUE(INPUT SPEED 2000RPM)(Nm)[lb-in]		265.00[2345.45]
MOMENT PERMISSIBLE TORQUE(Nm)[lb-in]		1080.00[9558.81]
PEAK START-STOP TORQUE(Nm)[lb-in]		568.00[5027.23]
MAXIMUM INPUT SPEED ALLOWED(RPM)		4000
AVERAGE INPUT SPEED ALLOWED(RPM)		3000
WEIGHT(kg)		4.40
LIFE(h)		15000
AMBIENT TEMPERATURE		0°C~40°C[32°F~104°F]

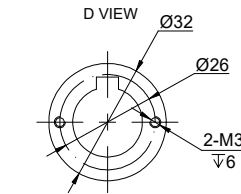
DIMENSIONS ARE IN MILLIMETERS.
TOLERANCES AS BELOW:
DECIMALS ANGLES
X ±0.5 ±2°
X.X ±0.25
X.XX ±0.13

THIRD ANGLE PROJECTION

SIGNATURE DATE

DRN LDJ 12.23.2025

APVD ZPJ 12.23.2025



STEPPERONLINE®

HARMONIC REDUCER

HHT-40-100-I-D19

REV.	0	SCALE	2:3	DWG NO.	A3360
------	---	-------	-----	---------	-------