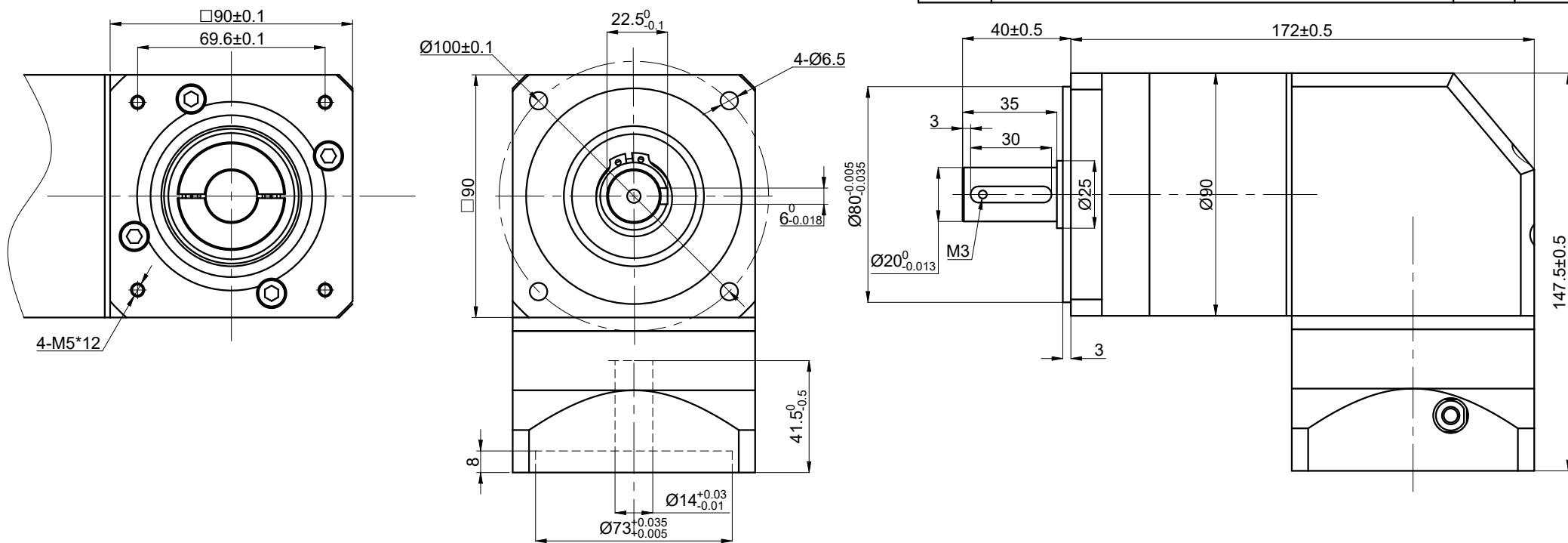


REV.	REVISION RECORD	BY	DATE
0	ORIGIN	LJ	9.8.2025



SPECIFICATION	CONNECTION	VALUE
GEAR RATIO		50
EFFICIENCY		94%
BACKLASH@NO-LOAD(arcmin)		$\leq 15$
MAX.PERMISSIBLE TORQUE(Nm)[lb-in]		100.00[885.07]
MOMENT PERMISSIBLE TORQUE(Nm)[lb-in]		200.00[1770.15]
SHAFT MAXIMUM AXIAL LOAD(N)		800
SHAFT MAXIMUM RADIAL LOAD(N)		1000
GEARBOX MATCHING MOTOR'S INPUT SHAFT LENGTH (mm)		22~41
RATED INPUT SPEED(RPM)		3000
MAX. INPUT SPEED(RPM)		6000
NOISE(dB)		$\leq 55$
WATERPROOF RATING		IP54
LIFE(h)		20000
WORKING TEMPERATURE		$-20^{\circ}\text{C} \sim 150^{\circ}\text{C} [-4^{\circ}\text{F} \sim 302^{\circ}\text{F}]$

DIMENSIONS ARE IN MILLIMETERS.  
TOLERANCES AS BELOW:  
DECIMALS ANGLES  
X  $\pm 0.5$   $\pm 2^{\circ}$   
X.X  $\pm 0.25$   
X.XX  $\pm 0.13$

THIRD ANGLE PROJECTION		
SIGNATURE		DATE
DRN	LJ	9.8.2025
APVD	LDJ	9.8.2025

**STEPPERONLINE®**

**PLANETARY GEARBOX**

**RYG34-G50**

REV.	0	SCALE	1:2	DWG NO.	A2066
------	---	-------	-----	---------	-------